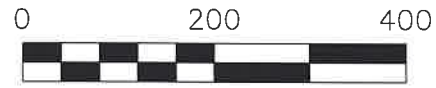


MECHANIC TOWNSHIP
N.E. & S.E. QTRS. SECTION 21
T-8 N; R-6 W
HOLMES COUNTY, OHIO

SURVEYED FOR: ANDREW MILLER



SCALE: 1"=200'

- 5/8" REBAR FOUND
UNLESS OTHERWISE NOTED
- 5/8" REBAR SET WITH I.D. CAP
○ I.D. CAP MARKED "BAKER 6938"

REFERENCES

- O.R. VOL. 287 PAGE 3315
- O.R. VOL. 287 PAGE 3317
- O.R. VOL. 242 PAGE 3170
- PLAT VOL. 19 PAGE 5154
- PLAT VOL. 2 PAGE 475

BASIS OF BEARINGS FROM OHIO STATE PLANE
COORDINATE SYSTEM, NORTH ZONE,
N.A.D. 83, 2011 ADJUSTMENT



I CERTIFY THIS SURVEY TO BE CORRECT
TO THE BEST OF MY KNOWLEDGE.

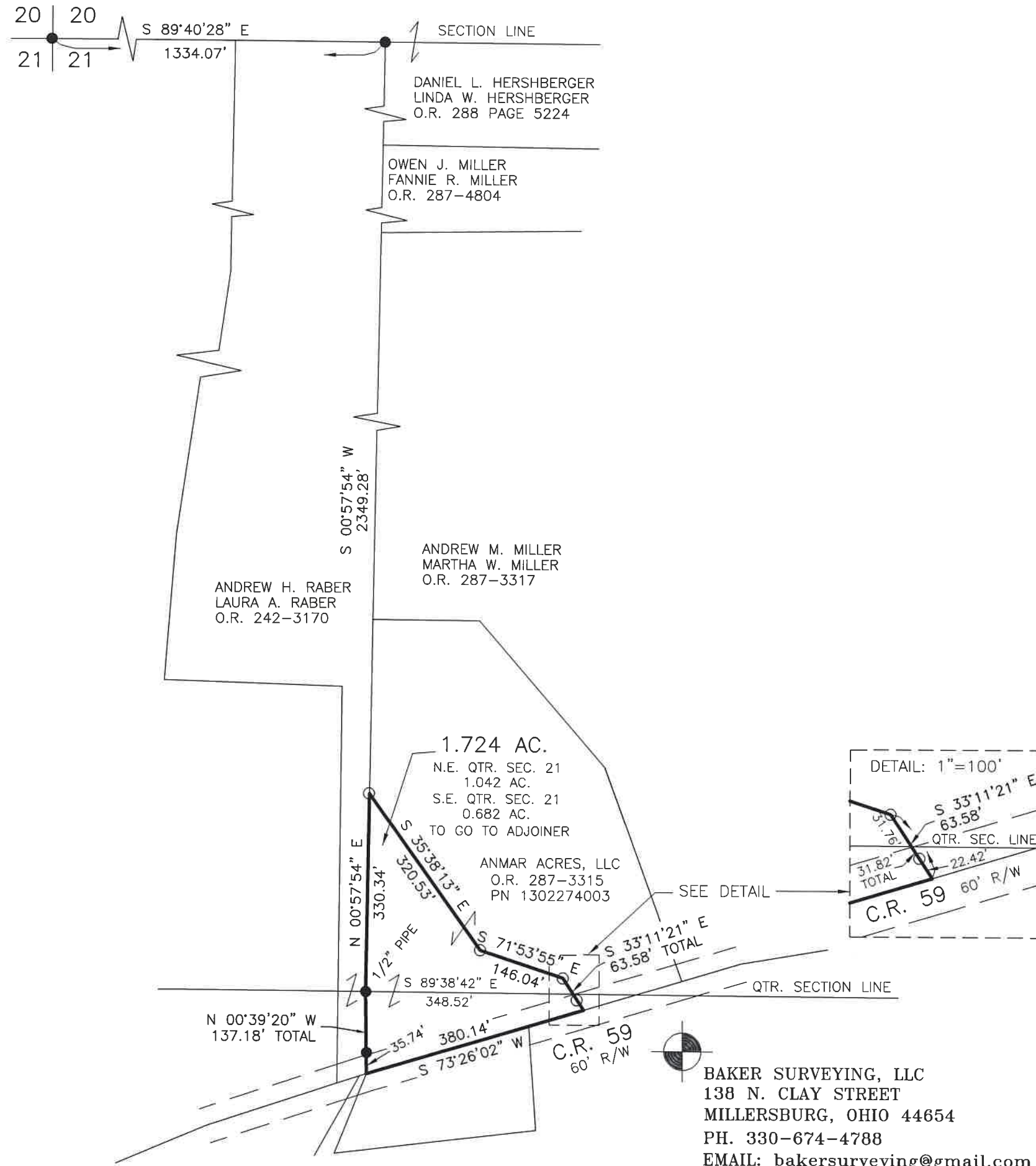
Donald C. Baker

DONALD C. BAKER P.S. 6938

DATE: DEC. 17, 2024

KES

FILE NAME: WORK7\S-491-24\CNK



202500000391

B: 19 P: 5484
FILED FOR RECORD IN
HOLMES COUNTY, OH
ANITA HALL, COUNTY RECORDER
01/31/2025 12:34 PM
SMALL PLAT . 40.00
PAGES: 1

ORV 291 Pg 1474

APPROVED FOR TRANSFER ONLY

NO SUBDIVISION PLAT REQUIRED

(O.R.C. 711.001 & 711.131)

Lot(s) not for building unless

approved by Board of Health

HOLMES CO. PLANNING COMMISSION

By AO Date 1/21/2025



Plat Approved

Holmes County Map Office

1/21/2025 Rg

BAKER SURVEYING, LLC
138 N. CLAY STREET
MILLERSBURG, OHIO 44654
PH. 330-674-4788
EMAIL: bakersurveying@gmail.com