

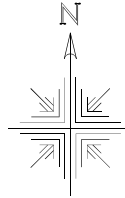
**Clark Township
S.E. Qtr. Section 9
T-8 N; R-5 W
Holmes County, Ohio**

SURVEYED FOR: Eli Schlabach

REFERENCES:

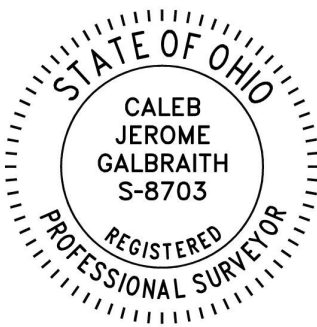
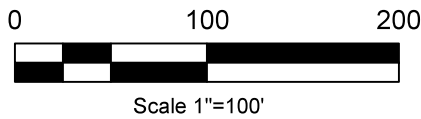
Deeds as shown

- Plat Vol. 19 Page 2694
- Plat Vol. 17 Page 428
- Plat Vol. 19 Page 983
- Plat Vol. 4 Page 34
- Plat Vol. 8 Page 253
- Plat Vol. 7 Page 199



- 5/8" Rebar Found
- ⊗ 5/8" Capped Pin Found "Baker"
- 5/8" Capped Pin Set "Galbraith 8703"
- Point

Basis of Bearing Grid North, Ohio State Plane Coordinate System, North Zone, NAD 83 (2011). Distances shown hereon are ground distances. To obtain grid distances multiply distances by scale factor of 0.99993263.

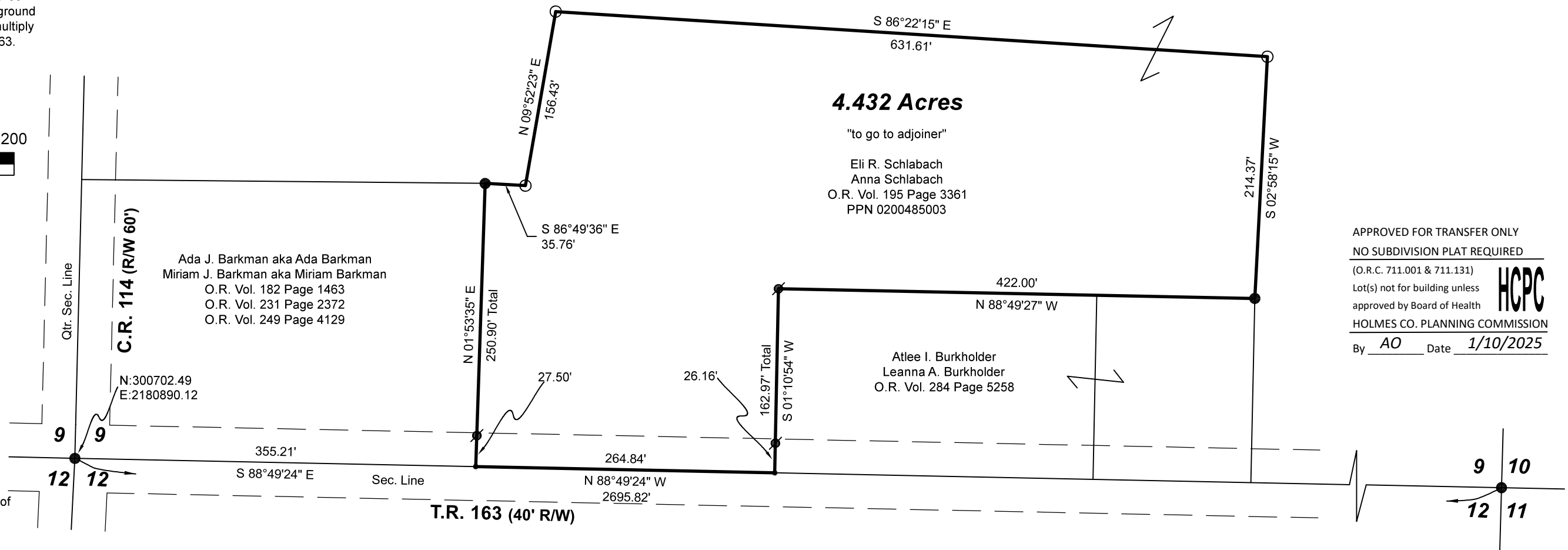


I certify this survey to be correct to the best of my knowledge.

Caleb Galbraith

Caleb Jerome Galbraith P.S. 8703
Date: November 22, 2024
Job ID: 18624

Pioneer Surveying & Services, LLC.
5434 Township Road 377
Millersburg, Ohio 44654
Phone: 330-231-0497
Email: caleb@pioneersurveyingandservices.com



202500000384

B: 19 P: 5483

FILED FOR RECORD IN
HOLMES COUNTY, OH

ANITA HALL, COUNTY RECORDER

01/31/2025 10:45 AM

SMALL PLAT . 40.00

PAGES: 1

ORV 291 Pg 1431

APPROVED FOR TRANSFER ONLY
NO SUBDIVISION PLAT REQUIRED

(O.R.C. 711.001 & 711.131)

Lot(s) not for building unless
approved by Board of Health



HOLMES CO. PLANNING COMMISSION

By AO Date 1/10/2025

Plat Approved

Holmes County Map Office

1/10/2025 MM