

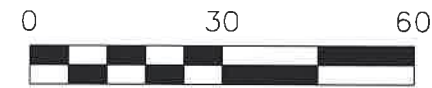
202400004997

B: 19 P: 5462
FILED FOR RECORD IN
HOLMES COUNTY, OH
ANITA HALL, COUNTY RECORDER
12/26/2024 11:03 AM
SMALL PLAT . 40.00
PAGES: 1
ORV 290 Pg 6621

VILLAGE OF MILLERSBURG
PART OF OUTLOT 109

HARDY TOWNSHIP
N.E. QTR. SECTION 12
T-9 N; R-7 W
HOLMES COUNTY, OHIO

SURVEYED FOR: KAUFMAN REALTY



SCALE: 1"=30'

● 5/8" REBAR FOUND
UNLESS OTHERWISE NOTED

○ DRILL HOLE IN CONC. SET

REFERENCES

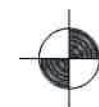
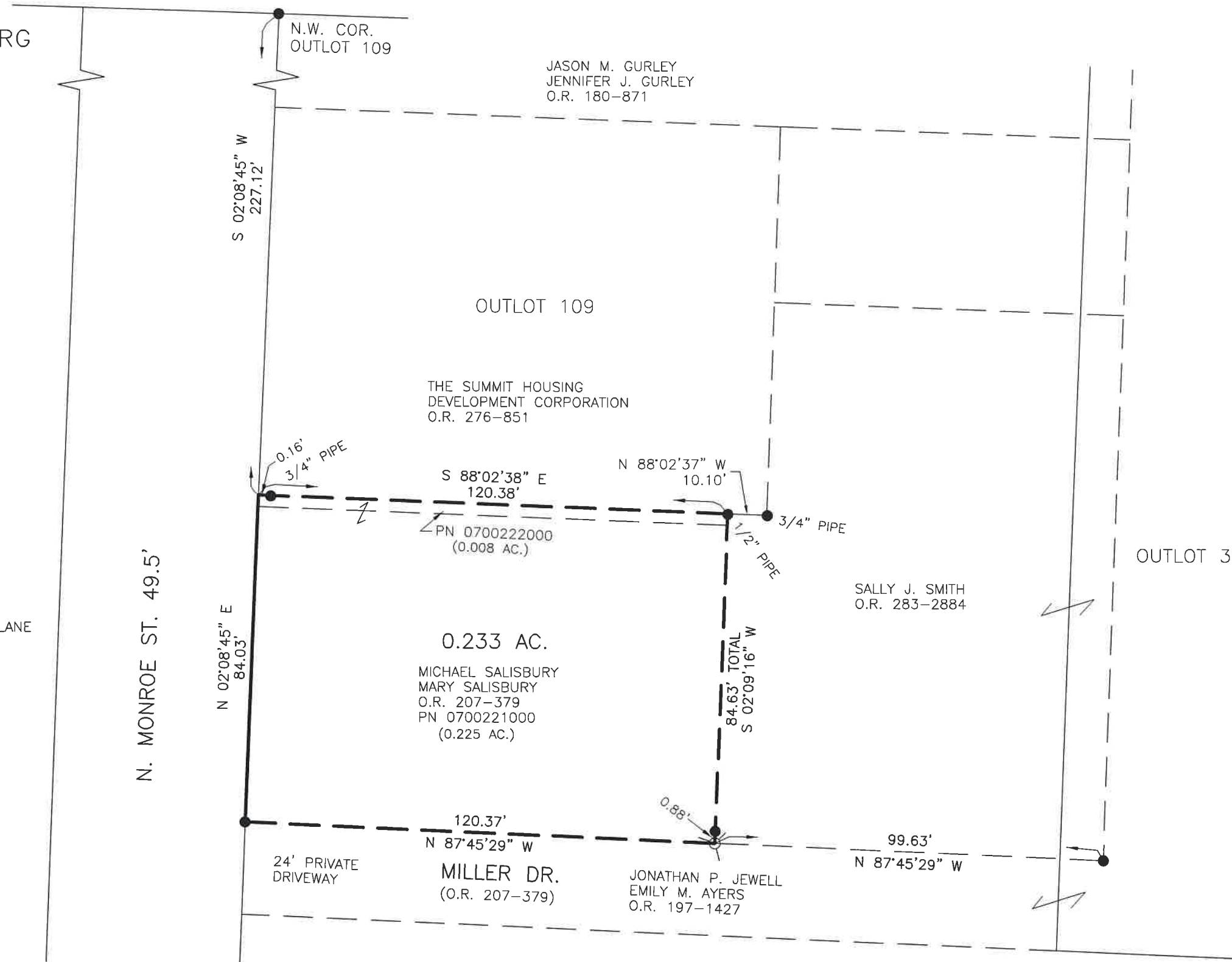
- O.R. VOL. 207 PAGE 379
- O.R. VOL. 283 PAGE 2884
- O.R. VOL. 197 PAGE 1427
- PLAT VOL. 19 PAGE 393
- PLAT VOL. 19 PAGE 997
- PLAT VOL. 3 PAGE 89

BASIS OF BEARINGS FROM OHIO STATE PLANE
COORDINATE SYSTEM, NORTH ZONE,
N.A.D. 83, 2011 ADJUSTMENT



I CERTIFY THIS SURVEY TO BE CORRECT
TO THE BEST OF MY KNOWLEDGE.

AL
AARON L. GERBER P.S. 8379
DATE: DEC. 9, 2024
ALG/KES
FILE NAME: WORK7\S-619-24\CNK



BAKER SURVEYING, LLC
138 N. CLAY STREET
MILLERSBURG, OHIO 44654
PH. 330-674-4788
EMAIL: bakersurveying@gmail.com

APPROVED FOR TRANSFER ONLY
NO SUBDIVISION PLAT REQUIRED
(O.R.C. 711.001 & 711.131)
Lot(s) not for building unless
approved by Board of Health
HOLMES CO. PLANNING COMMISSION
By TS Date 12/17/2024



Plat Approved
Holmes County Map Office
12/13/2024 MM