

Berlin Township
3rd Qtr. Lot 25
T-9 N; R-5 W
Holmes County, Ohio

Wayne J. Beachy, trustee of the Wayne J. Beachy Revocable Trust
 Wayne J. Beachy, successor trustee of the Amanda Beachy Revocable Trust
 O.R. Vol. 161 Page 333
 O.R. Vol. 280 Page 4851

202400004644
 B: 19 P: 5441
 FILED FOR RECORD IN
 HOLMES COUNTY, OH
 ANITA HALL, COUNTY RECORDER
 12/02/2024 10:55 AM
 SMALL PLAT . 40.00
 PAGES: 1
ORV 290 Pg 4856

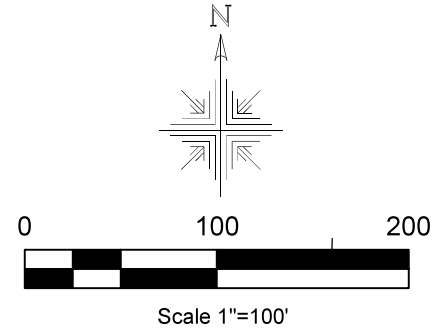
SURVEYED FOR: James Beachy

REFERENCES:

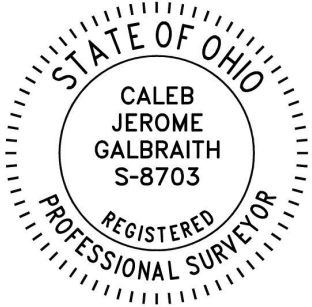
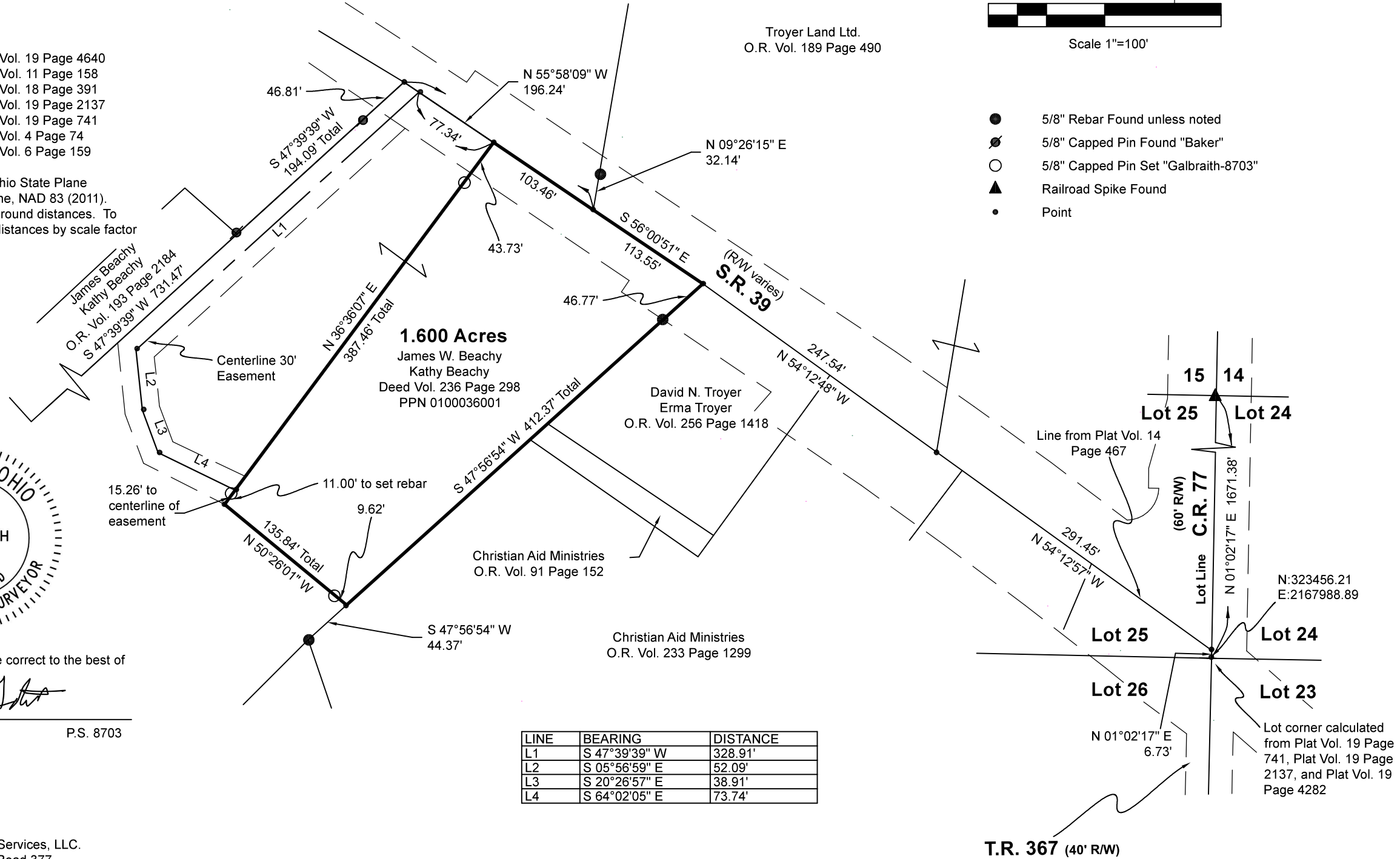
Deeds as shown

- Plat Vol. 19 Page 886
- Plat Vol. 19 Page 258
- Plat Vol. 14 Page 135
- Plat Vol. 14 Page 467
- Plat Vol. 14 Page 135
- Plat Vol. 19 Page 4282
- Plat Vol. 8 Page 544
- Plat Vol. 19 Page 4640
- Plat Vol. 11 Page 158
- Plat Vol. 18 Page 391
- Plat Vol. 19 Page 2137
- Plat Vol. 19 Page 741
- Plat Vol. 4 Page 74
- Plat Vol. 6 Page 159

Basis of Bearing Grid North, Ohio State Plane
 Coordinate System, North Zone, NAD 83 (2011).
 Distances shown hereon are ground distances. To
 obtain grid distances multiply distances by scale factor
 of 0.999240938.



- 5/8" Rebar Found unless noted
- ⊗ 5/8" Capped Pin Found "Baker"
- 5/8" Capped Pin Set "Galbraith-8703"
- ▲ Railroad Spike Found
- Point



I certify this survey to be correct to the best of
 my knowledge

Caleb Galbraith

Caleb Jerome Galbraith P.S. 8703
 Date: June 12, 2024
 Job ID: 8224

LINE	BEARING	DISTANCE
L1	S 47°39'39" W	328.91'
L2	S 05°56'59" E	52.09'
L3	S 20°26'57" E	38.91'
L4	S 64°02'05" E	73.74'

Pioneer Surveying & Services, LLC.
 5434 Township Road 377
 Millersburg, Ohio 44654
 Phone: 330-231-0497
 Email: caleb@pioneersurveyingandservices.com



APPROVED FOR TRANSFER ONLY
 NO SUBDIVISION PLAT REQUIRED
 (O.R.C. 711.001 & 711.131)
 Lot(s) not for building unless
 approved by Board of Health
 HOLMES CO. PLANNING COMMISSION
 By AO Date 11/19/2024



Plat Approved
 Holmes County Map Office
 10/22/2024 MM