

Richland Township
S.E. Qtr. Section 5
T-8 N; R-8 W
Holmes County, Ohio

SURVEYED FOR: Doug Diemer

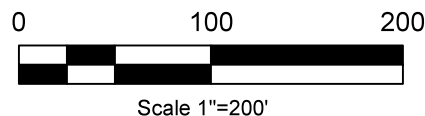
REFERENCES:

Deeds as shown
Plat Vol. 3 Page 12B
Plat Vol. 19 Page 3377
Plat Vol. 12 Page 588/590

unrecorded survey by Donald Baker dated Dec. 28, 1998

easement survey by William Long dated Dec. 26, 1985

Basis of Bearing Grid North, Ohio State Plane Coordinate System, North Zone, NAD 83 (2011). Distances shown hereon are ground distances. To obtain grid distances multiply distances by scale factor of 0.99993263.



I certify this survey to be correct to the best of my knowledge.

Caleb Jerome Galbraith P.S. 8703
Date: October 16, 2024
Job ID: 15724

Pioneer Surveying & Services, LLC.
5434 Township Road 377
Millersburg, Ohio 44654
Phone: 330-231-0497
Email: caleb@pioneersurveyingandservices.com



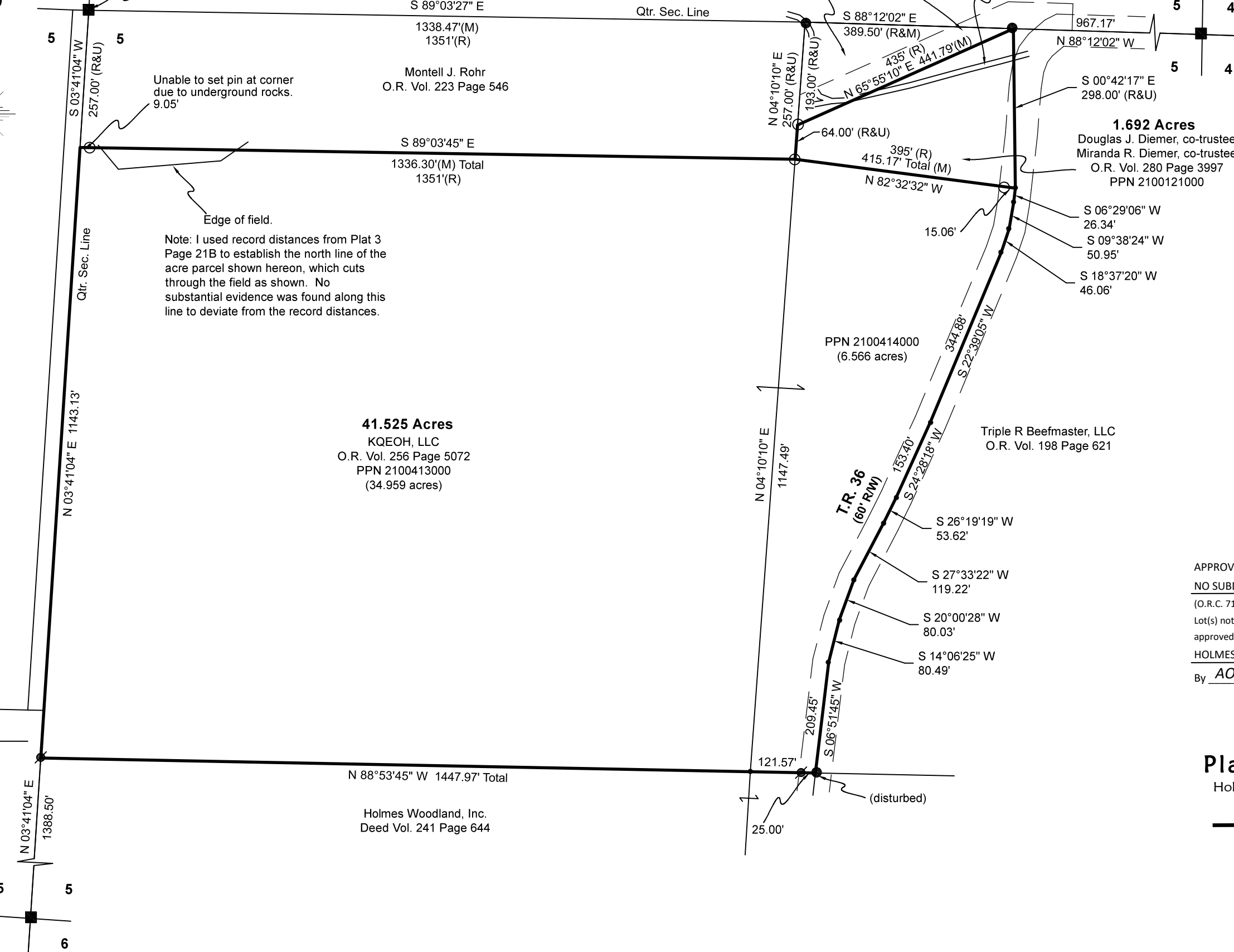
MASTER PLAT The purpose of this survey.

Action 1) Convey 1.692 acres.

Action 2) Convey 41.525 acres

N:311127.09
E:2088123.83

- Stone Found
- 5/8" Rebar Found
- ⦿ 5/8" Capped Pin Found "Baker"
- 5/8" Capped Pin Set "Galbraith-8703"
- Point



202400004579

B: 19 P: 5438
FILED FOR RECORD IN
HOLMES COUNTY, OH
ANITA HALL, COUNTY RECORDER
11/25/2024 02:57 PM
SMALL PLAT . 40.00
PAGES: 1

ORV 290 Pg 4535
ORV 290 Pg 4539

APPROVED FOR TRANSFER ONLY
NO SUBDIVISION PLAT REQUIRED
(O.R.C. 711.001 & 711.131)
Lot(s) not for building unless approved by Board of Health
HOLMES CO. PLANNING COMMISSION
By AO Date 11/20/2024



Plat Approved

Holmes County Map Office

11/19/2024 MM