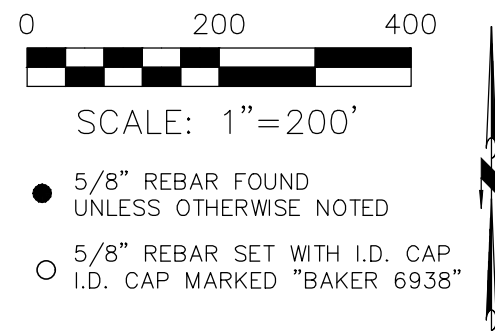


PAINT TOWNSHIP
 3RD QTR., LOTS 34 & 35
 T-10 N; R-4 W
 4TH QTR., LOT 3
 T-10 N; R-5 W
 HOLMES COUNTY, OHIO

SURVEYED FOR: STEVIE WEAVER

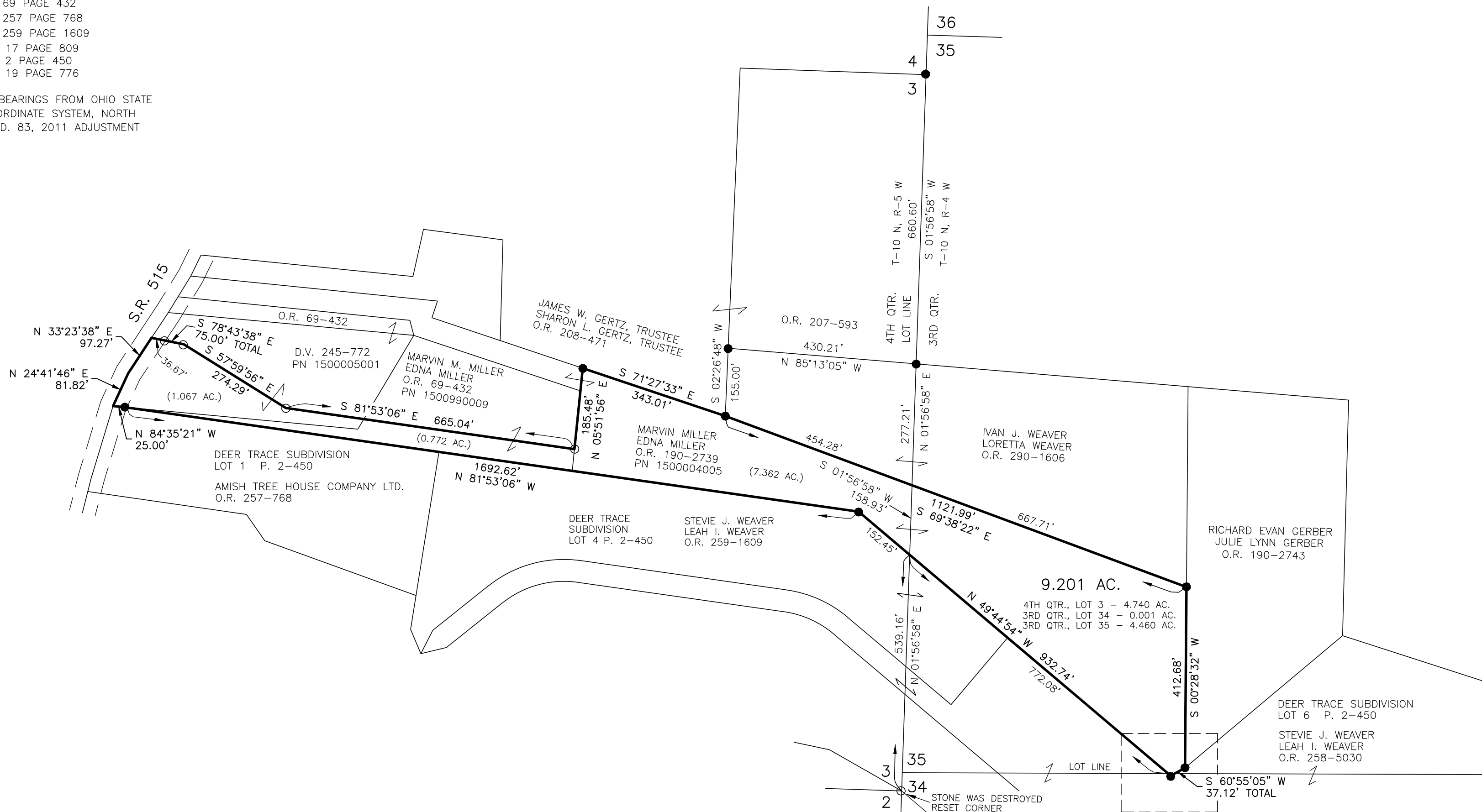


202400004574
 B: 19 P: 5437
 FILED FOR RECORD IN
 HOLMES COUNTY, OH
 ANITA HALL, COUNTY RECORDER
 11/25/2024 01:18 PM
 SMALL PLAT . 40.00
 PAGES: 1
 ORV 290 Pg 4528

REFERENCES

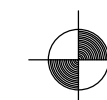
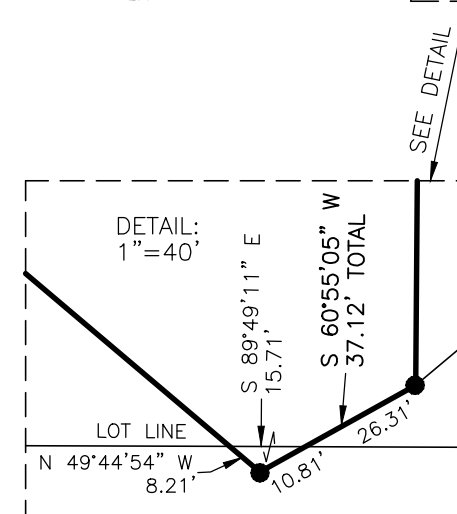
- DEED VOL. 245 PAGE 772
- O.R. VOL. 69 PAGE 432
- O.R. VOL. 257 PAGE 768
- O.R. VOL. 259 PAGE 1609
- PLAT VOL. 17 PAGE 809
- PLAT VOL. 2 PAGE 450
- PLAT VOL. 19 PAGE 776

BASIS OF BEARINGS FROM OHIO STATE
 PLANE COORDINATE SYSTEM, NORTH
 ZONE, N.A.D. 83, 2011 ADJUSTMENT



I CERTIFY THIS SURVEY TO BE CORRECT
 TO THE BEST OF MY KNOWLEDGE.

Donald C. Baker
 DONALD C. BAKER P.S. 6938
 DATE: NOV. 1, 2024
 ALG\TAB
 FILE NAME: WORK5\S-495A-24



BAKER SURVEYING, LLC
 138 N. CLAY STREET
 MILLERSBURG, OHIO 44654
 PH. 330-674-4788
 EMAIL: bakersurveying@gmail.com

APPROVED FOR TRANSFER ONLY
 NO SUBDIVISION PLAT REQUIRED
 (O.R.C. 711.001 & 711.131)
 Lot(s) not for building unless
 approved by Board of Health
 HOLMES CO. PLANNING COMMISSION
 By AO Date 11/12/2024



Plat Approved
 Holmes County Map Office
 11/12/2024 MM