

**Salt Creek Township
N.W. Qtr. Section 1
T-14 N; R-12W
Holmes County, Ohio**

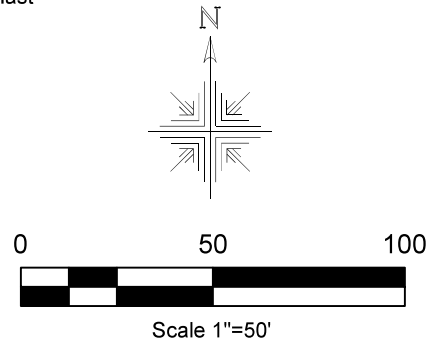
SURVEYED FOR: Owen Mast

202400004429
B: 19 P: 5433
FILED FOR RECORD IN
HOLMES COUNTY, OH
ANITA HALL, COUNTY RECORDER
11/15/2024 11:15 AM
SMALL PLAT . 40.00
PAGES: 1
ORV 290 Pg 3822

REFERENCES:

Deeds as shown

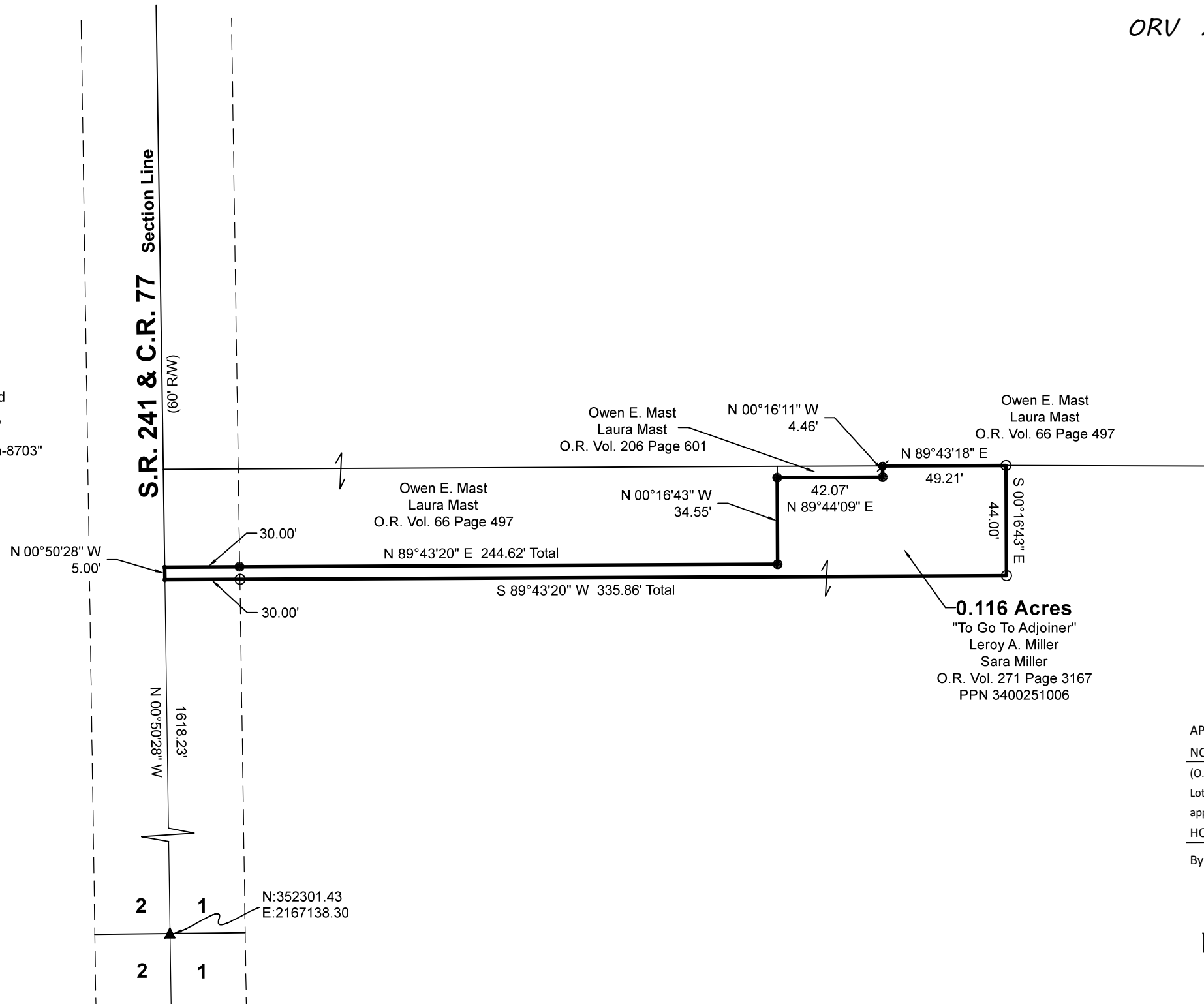
- Plat Vol. 19 Page 3851
- Plat Vol. 12 Page 384
- Plat Vol. 19 Page 1353
- Plat Vol. 19 Page 4027
- Plat Vol. 5 Page 60
- Plat Vol. 2 Page 658



Basis of Bearing from Ohio State Plane Coordinate System, North Zone, NAD 83 (2011). Distances shown hereon are ground distances. To obtain grid distances multiply distances by scale factor of 0.9999905963



- ▲ R.R. Spk. Found
- 5/8" Rebar Found unless noted
- ⦿ 5/8" Capped Pin Found "AMD"
- 5/8" Capped Pin Set "Galbraith-8703"
- Point



I certify this survey to be correct to the best of my knowledge.

Caleb Galbraith

Caleb Jerome Galbraith P.S. 8703
Date: May 3, 2024
Job ID: 6324
Pioneer Surveying & Services, LLC.
5434 Township Road 377
Millersburg, Ohio 44654
Phone: 330-231-0497
Email: caleb@pioneersurveyingandservices.com



APPROVED FOR TRANSFER ONLY
NO SUBDIVISION PLAT REQUIRED
(O.R.C. 711.001 & 711.131)
Lot(s) not for building unless
approved by Board of Health
HOLMES CO. PLANNING COMMISSION
By AO Date 8/15/2024



Plat Approved
Holmes County Map Office
8/15/2024 Rg