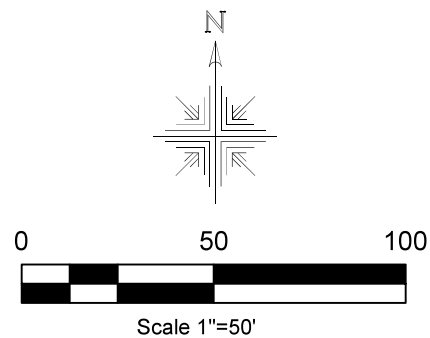


Survey of Easement Killbuck Township S.W. Qtr. Sec. 10 T-8 N; R-8 W Holmes County, Ohio

SURVEYED FOR: Bridger Cline

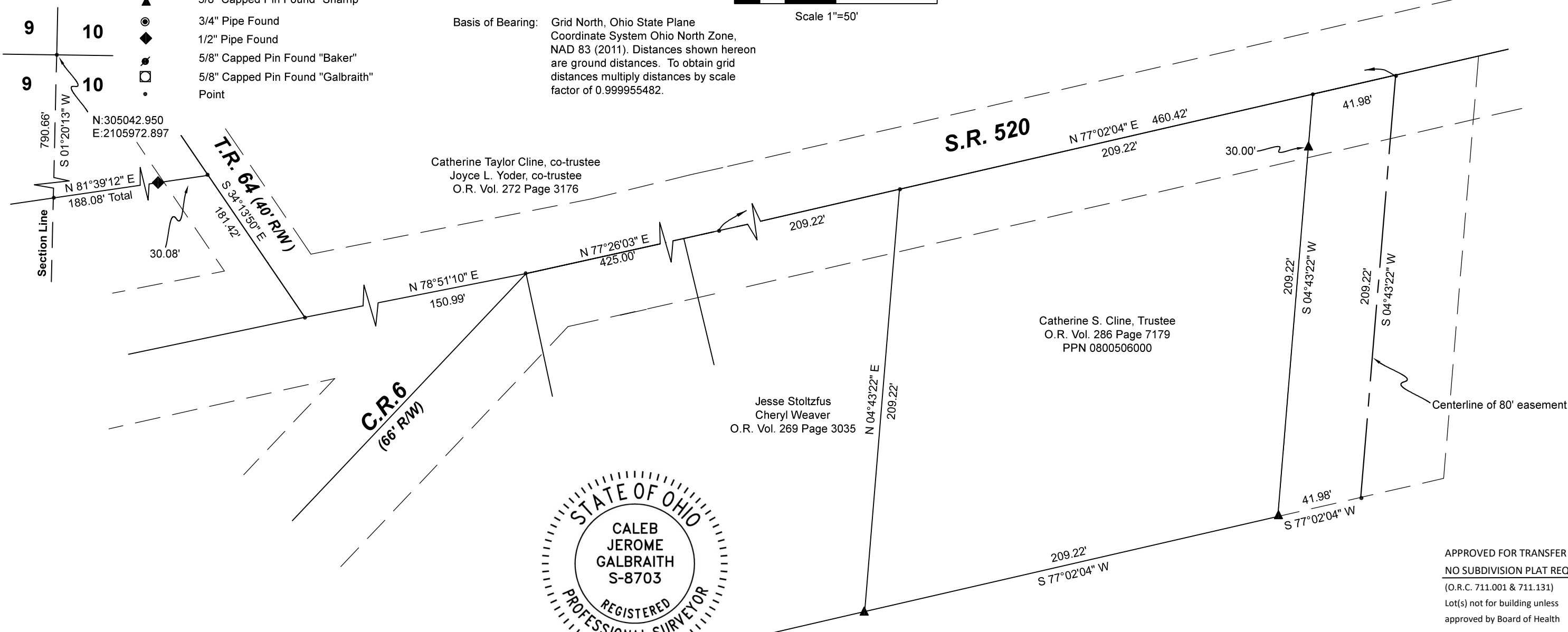
REFERENCES:
Deeds as shown

Plat Vol. 19 Page 1692
Plat Vol. 02 Page 491
Plat Vol. 02 Page 113
Plat Vol. 03 Page 63
Plat Vol. 19 Page 1579
Plat Vol. 19 Page 5208



Basis of Bearing: Grid North, Ohio State Plane
Coordinate System Ohio North Zone,
NAD 83 (2011). Distances shown hereon
are ground distances. To obtain grid
distances multiply distances by scale
factor of 0.999955482.

- ▲ 5/8" Capped Pin Found "Shamp"
- 3/4" Pipe Found
- ◆ 1/2" Pipe Found
- 5/8" Capped Pin Found "Baker"
- 5/8" Capped Pin Found "Galbraith"
- Point



Catherine Taylor Cline, co-trustee
Joyce L. Yoder, co-trustee
O.R. Vol. 272 Page 3176

Catherine S. Cline, Trustee
O.R. Vol. 286 Page 7179
PPN 0800506000

Jesse Stoltzfus
Cheryl Weaver
O.R. Vol. 269 Page 3035



I certify this survey to be correct to the best of
my knowledge.

Caleb Galbraith

Caleb Jerome Galbraith P.S. 8703
Date: July 31, 2024
Job ID: 8124

Catherine Taylor Cline, co-trustee
Joyce L. Yoder, co-trustee
O.R. Vol. 272 Page 3176
PPN 0800618000

APPROVED FOR TRANSFER ONLY
NO SUBDIVISION PLAT REQUIRED
(O.R.C. 711.001 & 711.131)
Lot(s) not for building unless
approved by Board of Health
HOLMES CO. PLANNING COMMISSION
By AO Date 11/14/2024



Plat Approved
Holmes County Map Office
11/12/2024 Rg

Pioneer Surveying & Services, LLC.
5434 Township Road 377
Millersburg, Ohio 44654
Phone: 330-231-0497
Email: caleb@pioneersurveyingandservices.com

