



- STONE FOUND
- 5/8" REBAR FOUND
- UNLESS OTHERWISE NOTED
- 5/8" REBAR SET WITH I.D. CAP
- I.D. CAP MARKED "BAKER 6938"

BASIS OF BEARINGS FROM  
 OHIO STATE PLANE COORDINATE  
 SYSTEM, NORTH ZONE, N.A.D. 83,  
 2011 ADJUSTMENT

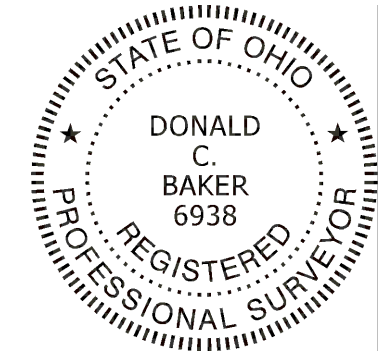
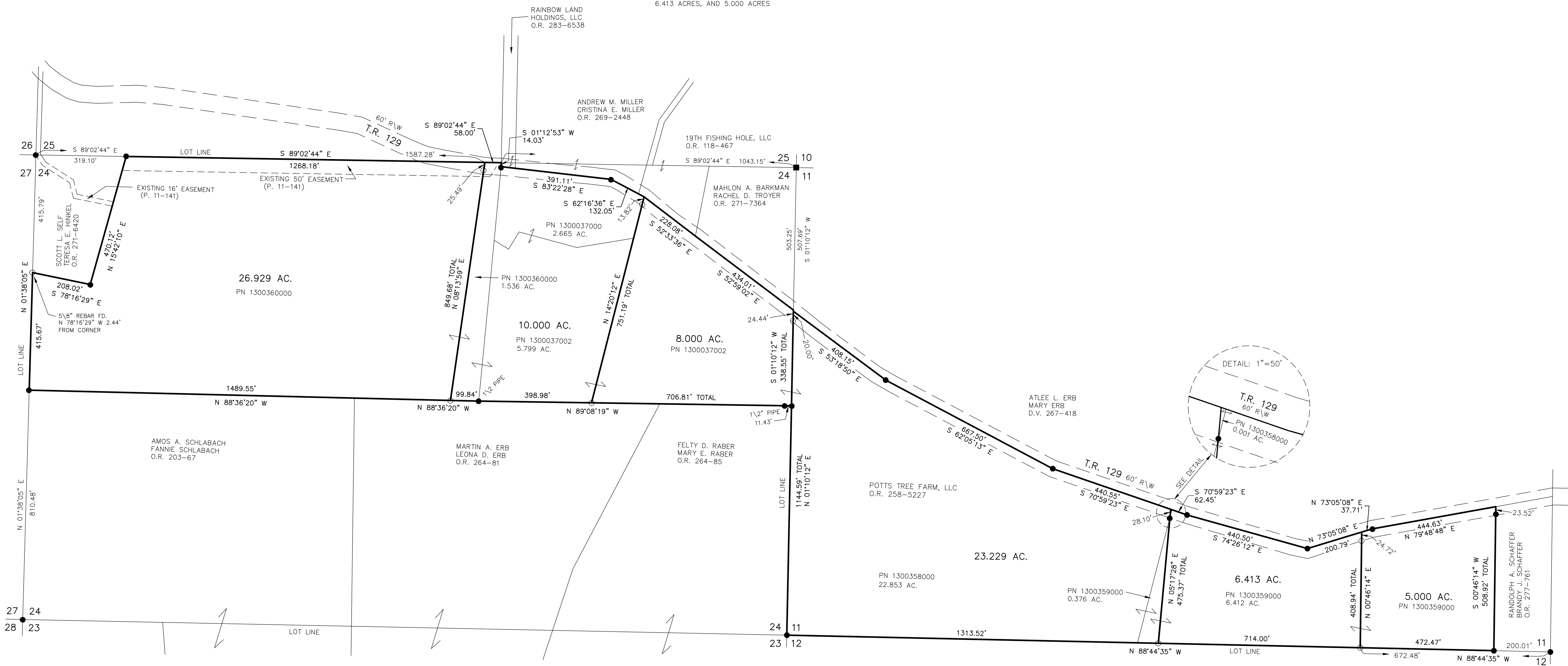
- REFERENCES
- O.R. VOL. 258 PAGE 5227
  - PLAT VOL. 2 PAGE 326
  - PLAT VOL. 10 PAGE 278
  - PLAT VOL. 11 PAGE 141
  - PLAT VOL. 16 PAGE 703
  - PLAT VOL. 19 PAGE 3462
  - PLAT VOL. 17 PAGE 506

MECHANIC TOWNSHIP  
 2ND. QTR., LOTS 11 & 24  
 T-8 N; R-6 W  
 HOLMES COUNTY, OHIO

SURVEYED FOR: POTTS TREE FARM, LLC

MASTER PLAT

ACTION 1) CONVEY 26.929 ACRES, 10.000 ACRES, 8.000 ACRES, 23.229 ACRES,  
 6.413 ACRES, AND 5.000 ACRES



I CERTIFY THIS SURVEY TO BE CORRECT  
 TO THE BEST OF MY KNOWLEDGE.

*Donald C. Baker*  
 DONALD C. BAKER P.S. 6938  
 DATE: OCT. 24, 2024  
 TAB\GRB  
 FILE NAME: WORK6\S-107-24

BAKER SURVEYING, LLC  
 138 N. CLAY STREET  
 MILLERSBURG, OHIO 44654  
 PH. 330-674-4788  
 EMAIL: bakersurveying@gmail.com

APPROVED FOR TRANSFER ONLY  
 NO SUBDIVISION PLAT REQUIRED  
 (O.R.C. 711.001 & 711.131)  
 Lot(s) not for building unless  
 approved by Board of Health  
 HOLMES CO. PLANNING COMMISSION  
 By AO Date 11/5/2024



Plat Approved  
 Holmes County Map Office  
 11/5/2024 Rg