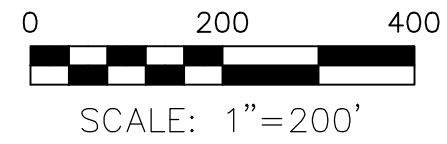


PAINT TOWNSHIP
 N.E. QTR. SECTION 35
 N.W. QTR. SECTION 36
 T-15 N; R-11 W
 HOLMES COUNTY, OHIO

SURVEYED FOR: SCHLABACH FAMILY



- DRILL HOLE FOUND
- ▲ R.R. SPIKE FOUND
- 5/8" REBAR FOUND UNLESS OTHERWISE NOTED
- P.K. NAIL SET
- 5/8" REBAR SET WITH I.D. CAP I.D. CAP MARKED "BAKER 6938"

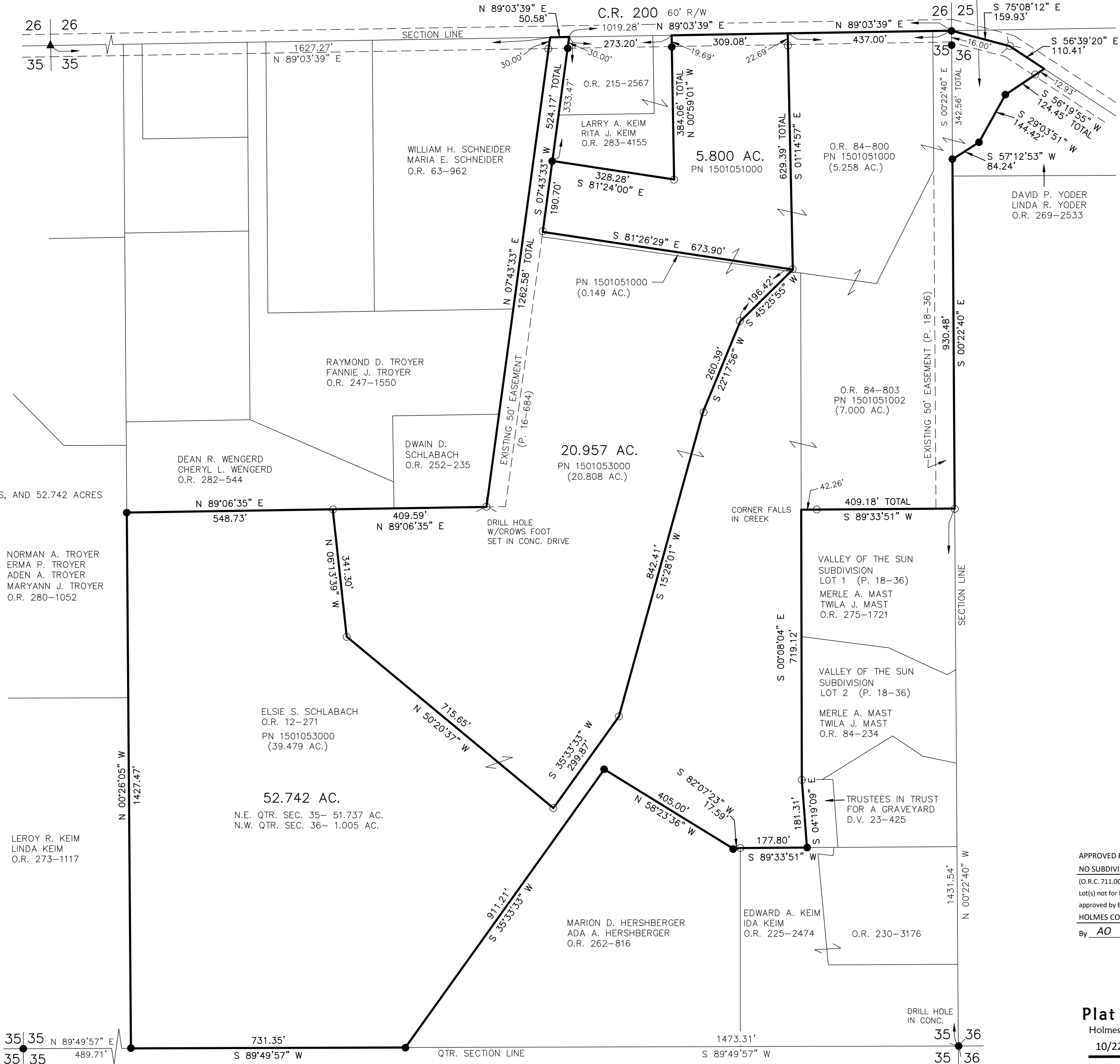
BASIS OF BEARINGS FROM OHIO STATE PLANE COORDINATE SYSTEM, NORTH ZONE, N.A.D. 83, 2011 ADJUSTMENT

REFERENCES

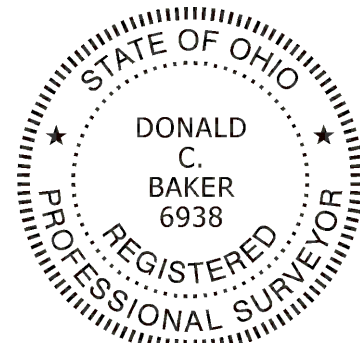
- O.R. VOL. 12 PAGE 271
- O.R. VOL. 84 PAGE 800
- O.R. VOL. 194 PAGE 2662
- PLAT VOL. 16 PAGE 783
- PLAT VOL. 16 PAGE 684
- PLAT VOL. 18 PAGE 36
- PLAT VOL. 16 PAGE 599
- PLAT VOL. 19 PAGE 4847
- PLAT VOL. 19 PAGE 933
- PLAT VOL. 19 PAGE 4128

MASTER PLAT

ACTION 1) CONVEY 5.800 ACRES, 20.957 ACRES, AND 52.742 ACRES



202400004154
 B: 19 P: 5414
 FILED FOR RECORD IN
 HOLMES COUNTY, OH
 ANITA HALL, COUNTY RECORDER
 10/29/2024 10:35 AM
 SMALL PLAT . 40.00
 PAGES: 1
 ORV 290 Pg 2532



I CERTIFY THIS SURVEY TO BE CORRECT TO THE BEST OF MY KNOWLEDGE.

Donald C. Baker
 DONALD C. BAKER P.S. 6938
 DATE: OCT. 8, 2024
 KES\VJD
 FILE NAME: WORK6\S-373-24\CNK

BAKER SURVEYING, LLC
 138 N. CLAY STREET
 MILLERSBURG, OHIO 44654
 PH. 330-674-4788
 EMAIL: bakersurveying@gmail.com

APPROVED FOR TRANSFER ONLY
 NO SUBDIVISION PLAT REQUIRED
 (O.R.C. 711.001 & 711.131)
 Lot(s) not for building unless approved by Board of Health
 HOLMES CO. PLANNING COMMISSION
 By AO Date 10/22/2024

Plat Approved
 Holmes County Map Office
 10/22/2024 MM