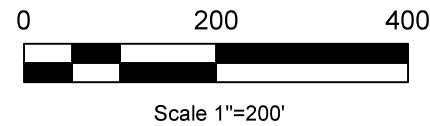
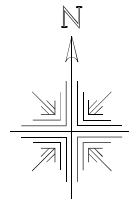


**Clark Township
S.W. Qtr. Section 4
T-8 N; R-5 W
Holmes County, Ohio**

SURVEYED FOR: Henry Yoder



- 5/8" Rebar Found unless noted
- ⊗ 5/8" Capped Pin Found "Baker"
- 5/8" Capped Pin Found "Galbraith-8703"
- 5/8" Capped Pin Set "Galbraith-8703"
- ▲ R.R. Spk. Found
- Point



I certify this survey to be correct to the best of my knowledge.

Caleb Galbraith

Caleb Jerome Galbraith P.S. 8703
Date: August 24, 2024
Drawn By: CJG
Job ID:12324

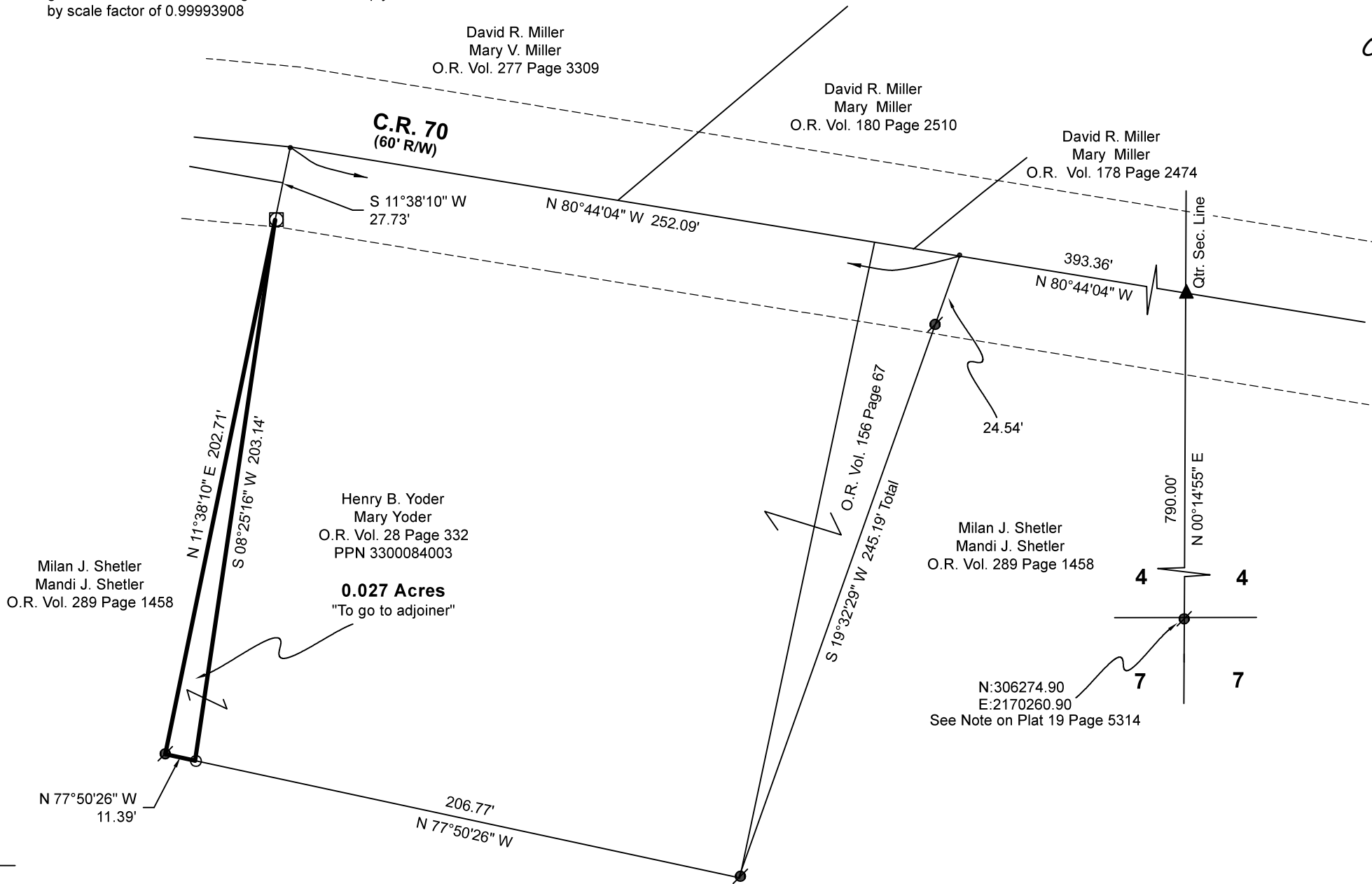
Pioneer Surveying & Services, LLC.
5434 Township Road 377
Millersburg, Ohio 44637
Phone: 330-231-0497
Email: caleb@pioneersurveyingandservices.com



Deeds as shown

Plat Vol. 17 Page 40
Plat Vol. 18 Page 668
Plat Vol. 5 Page 48
Plat Vol. 19 Page 5314

Basis of Bearing from Ohio State Plane Coordinate System, North Zone, NAD 83 (2011). Distances shown hereon are ground distances. To obtain grid distances multiply distances by scale factor of 0.99993908



202400004050

B: 19 P: 5409

FILED FOR RECORD IN
HOLMES COUNTY, OH
ANITA HALL, COUNTY RECORDER

10/23/2024 11:15 AM

SMALL PLAT . 40.00

PAGES: 1

ORV 290 Pg 2026

APPROVED FOR TRANSFER ONLY

NO SUBDIVISION PLAT REQUIRED

(O.R.C. 711.001 & 711.131)

Lot(s) not for building unless
approved by Board of Health

HOLMES CO. PLANNING COMMISSION

By AO Date 9/24/2024



Plat Approved

Holmes County Map Office

9/17/2024 MM