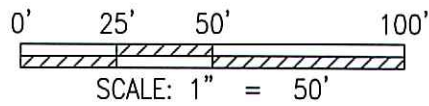


MAP OF SURVEY TOWNSHIP OF MONROE T-9N ; R-8W 1ST QUARTER PARTS OF LOTS 24 & 25 COUNTY OF HOLMES STATE OF OHIO

202400004046
B: 19 P: 5408
FILED FOR RECORD IN
HOLMES COUNTY, OH
ANITA HALL, COUNTY RECORDER
10/23/2024 09:59 AM
SMALL PLAT . 40.00
PAGES: 1
ORV 290 Pg 2016



- IRON PIN OR PIPE FD. (AS NOTED)
- ✕ MAG NAIL FD.
- ✕ MAG NAIL SET
- 5/8" REBAR SET WITH I.D. CAP MARKED "SJL, INC"



BASIS OF BEARING:
The bearings as shown hereon are relative to GRID NORTH of the OHIO STATE PLANE COORDINATE SYSTEM, NAD 83 DATUM 2011 ADJUSTMENT

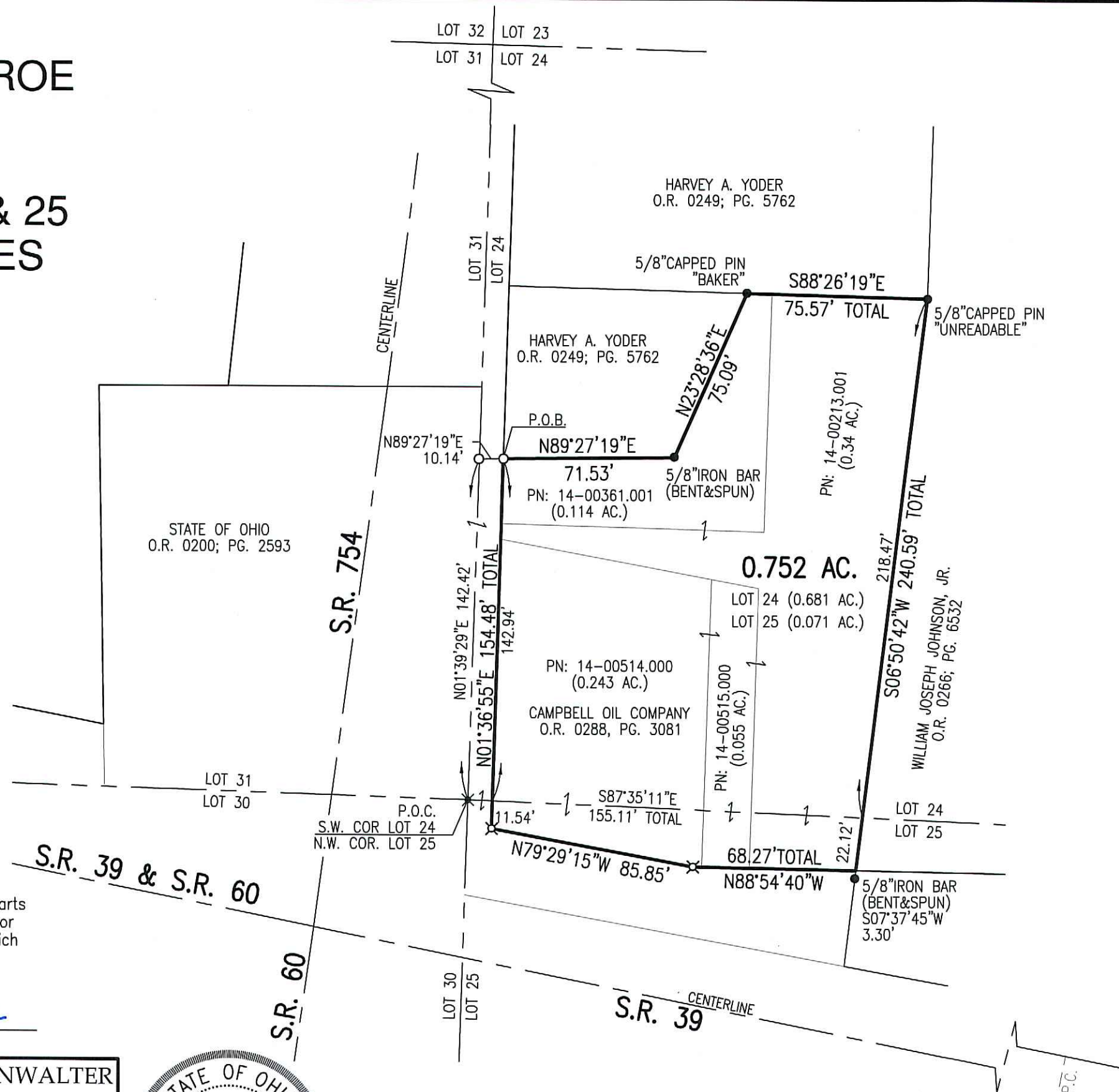
Distances shown hereon are expressed in feet and decimal parts thereof, bearings are used to express angles only, iron pins or monuments were found or set as indicated hereon. All of which I believe to be correct to the best of my knowledge.

By: Mark E. Purdy 7-12-24
Mark E. Purdy, P.S. #7307 Date

SHAFFER, JOHNSTON, LICHTENWALTER & ASSOCIATES, INC.
Consulting Engineers & Surveyors
3477 Commerce Parkway, Suite C
Wooster, Ohio 44691
TEL (330) 345-6377 FAX (330) 345-6725 EMAIL sjl@sjl-inc.com



DRAWN C. Falb	CHECKED	SCALE 1" = 50'	DATE 07/02/2024
DWG NO: EW-2781-SURVEY		JOB NO: EW-2781	
SHEET 1 OF 1			



- LOT LINE
- CENTERLINE
- DEDICATED R/W LINE
- EX. PROPERTY LINE
- PROP. PROPERTY LINE

APPROVED FOR TRANSFER ONLY
NO SUBDIVISION PLAT REQUIRED
(O.R.C. 711.001 & 711.131)
Lot(s) not for building unless approved by Board of Health
HOLMES CO. PLANNING COMMISSION
By TS Date 10/22/2024



Plat Approved
Holmes County Map Office
10/22/2024 MM