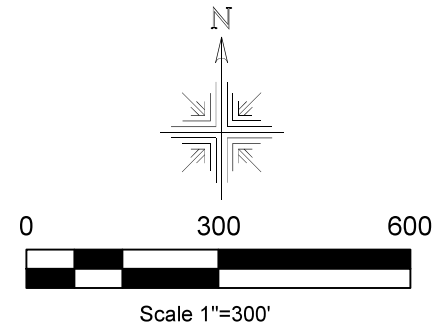


**Monroe Township**  
**2nd Qtr. Lots 16 & 25**  
**T-9 N; R-8 W**  
**S.W. Qtr. Sec. 21**  
**T-17 N, R-14 W**  
**Holmes County, Ohio**

SURVEYED FOR: Christine Bower



- 5/8" Rebar Found
- ▲ RR Spk. Found
- Capped Pin Set "Galbraith"
- Capped Pin Found "Galbraith"
- Point

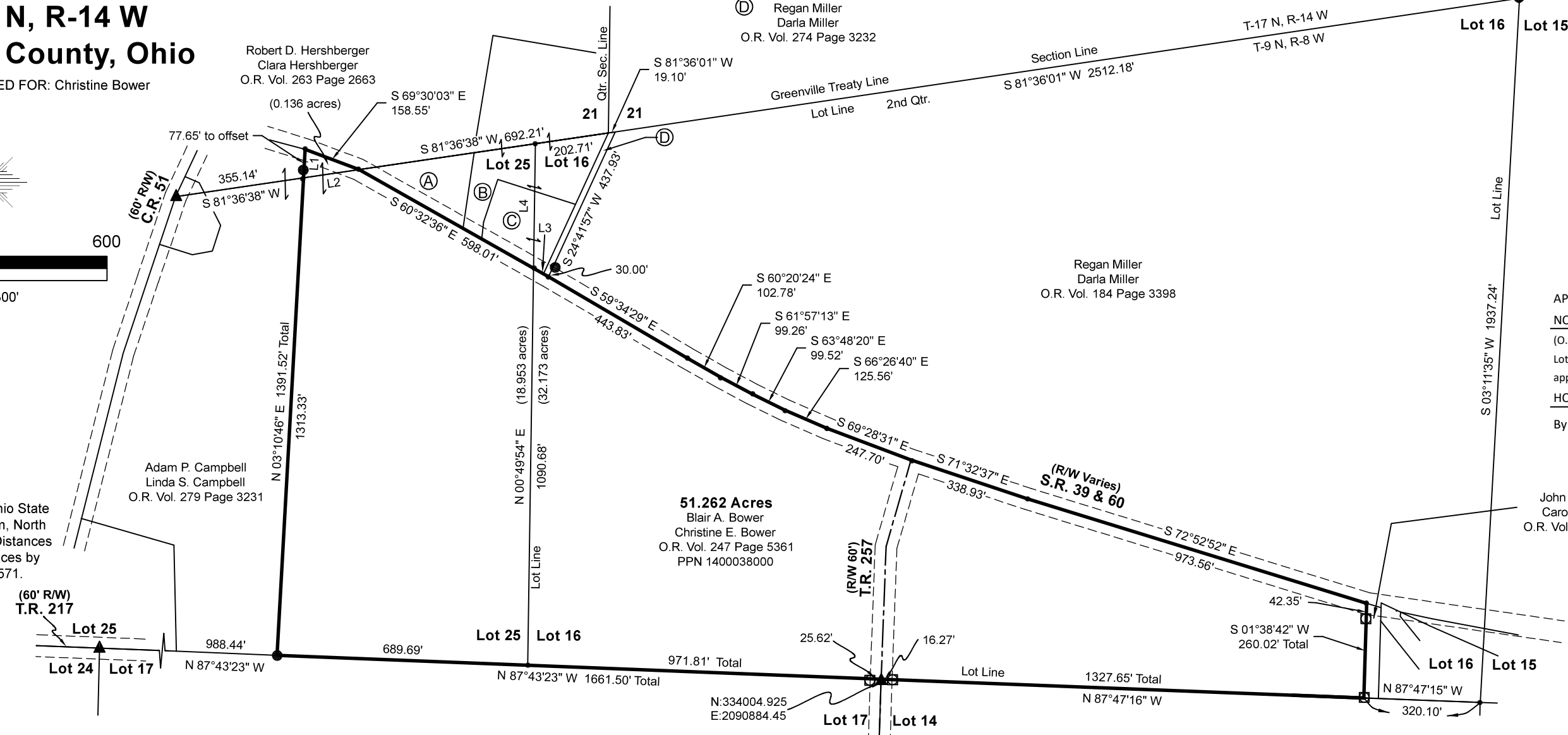
- (A) Owens Fortune, LLC  
O.R. Vol. 270 Page 3107
- (B) Karen J. Bright  
O.R. Vol. 189 Page 3015
- (C) Thomas W. Bright  
Tara J. Bright  
O.R. Vol. 255 Page 2845
- (D) Regan Miller  
Darla Miller  
O.R. Vol. 274 Page 3232

202400003963  
 B: 19 P: 5406  
 FILED FOR RECORD IN  
 HOLMES COUNTY, OH  
 ANITA HALL, COUNTY RECORDER  
 10/17/2024 02:22 PM  
 SMALL PLAT . 40.00  
 PAGES: 1  
 ORV 290 Pg 1705

**REFERENCES:**  
 Deeds as shown

- Plat Vol. 06 Page 108
- Plat Vol. 16 Page 512
- Plat Vol. 19 Page 4954
- Plat Vol. 17 Page 48
- Plat Vol. 19 Page 738
- Plat Vol. 19 Page 4158
- Plat Vol. 19 Page 4414

Basis of Bearing from Ohio State Plane Coordinate System, North Zone, NAD 83 (2011). Distances shown hereon are distances by scale factor of 0.999927571.



APPROVED FOR TRANSFER ONLY  
 NO SUBDIVISION PLAT REQUIRED  
 (O.R.C. 711.001 & 711.131)  
 Lot(s) not for building unless approved by Board of Health  
 HOLMES CO. PLANNING COMMISSION  
 By TS Date 10/10/2024



I certify this survey to be correct to the best of my knowledge

*Caleb Galbraith*

Caleb Jerome Galbraith P.S. 8703  
 Date: September 13, 2024  
 Job ID: 9024  
 Pioneer Surveying & Services, LLC.  
 5434 Township Road 377  
 Millersburg, Ohio 44654  
 Phone: 330-231-0497  
 Email: caleb@pioneersurveyingandservices.com



LINE	BEARING	DISTANCE
L1	N 03°10'46" E	78.18'
L2	S 81°36'38" W	154.50'
L3	N 60°32'36" W	47.56'
L4	N 00°49'54" E	342.15'

**Plat Approved**  
 Holmes County Map Office  
 10/9/2024 MM

