

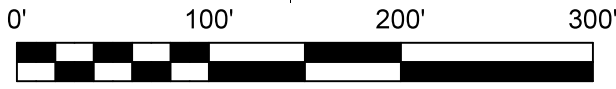
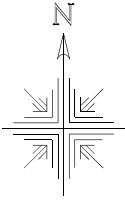
**Richland Township
N.W. Qtr. Section 5
T-8 N; R-9 W
Holmes County, Ohio**

SURVEYED FOR: Ryan Yoder

REFERENCES:

Deeds as shown
Plat Vol. 9 Page 220
Plat Vol. 3 Page 14B
Plat Vol. 19 Page 4429
Plat Vol. 19 Page 2025
Plat Vol. 2 Page 605

Basis of Bearing Grid North, Ohio State Plane
Coordinate System, North Zone, NAD 83
(2011). Distances shown hereon are ground
distances. To obtain grid distances multiply
distances by scale factor of 0.99993303.

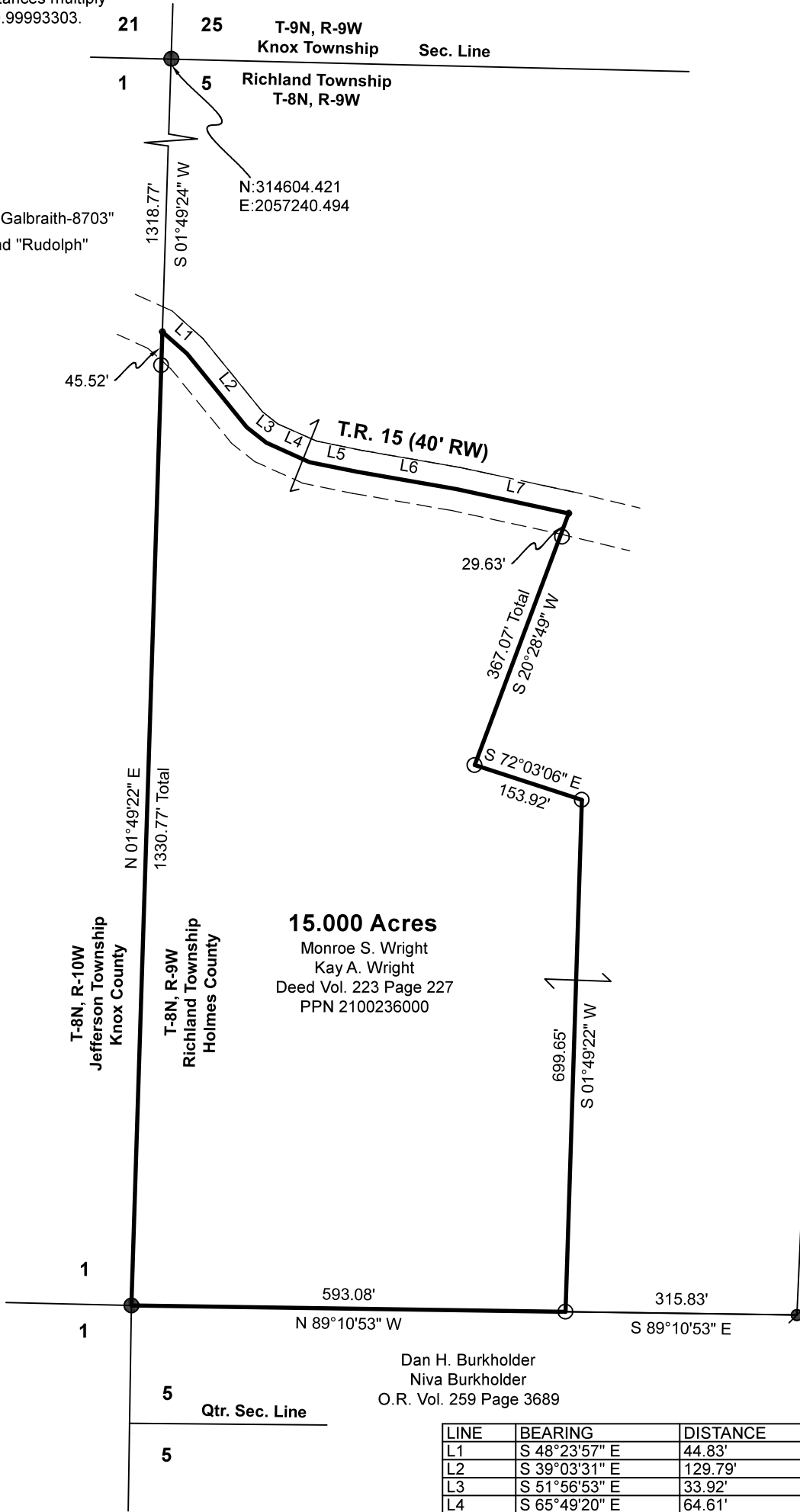


Scale 1"=200'

202400003804
B: 19 P: 5396
FILED FOR RECORD IN
HOLMES COUNTY, OH
ANITA HALL, COUNTY RECORDER
10/08/2024 01:45 PM
SMALL PLAT . 40.00
PAGES: 1

ORV 290 Pg 917

- 5/8" Capped Pin Set "Galbraith-8703"
- 5/8" Capped Pin Found "Rudolph"
- 5/8" Rebar Found
- Point



LINE	BEARING	DISTANCE
L1	S 48°23'57" E	44.83'
L2	S 39°03'31" E	129.79'
L3	S 51°56'53" E	33.92'
L4	S 65°49'20" E	64.61'
L5	S 78°28'03" E	65.95'
L6	S 80°08'00" E	137.81'
L7	S 77°47'00" E	157.16'

APPROVED FOR TRANSFER ONLY
NO SUBDIVISION PLAT REQUIRED
(O.R.C. 711.001 & 711.131)
Lot(s) not for building unless
approved by Board of Health
HOLMES CO. PLANNING COMMISSION
By AO Date 9/24/2024



Pioneer Surveying & Services, LLC.
5434 Township Road 377
Millersburg, Ohio 44654
Phone: 330-231-0497
Email: caleb@pioneersurveyingandservices.com



I certify this survey to be correct to the best of my knowledge.

Caleb Galbraith

Caleb Jerome Galbraith P.S. 8703
Date: August 13, 2024
Job ID: 10824

Plat Approved
Holmes County Map Office
9/23/2024 MM