



SCALE: 1"=200'

- STONE FOUND
- 5/8" REBAR FOUND
- 5/8" REBAR SET WITH I.D. CAP
- I.D. CAP MARKED "BAKER 6938"



PAINT TOWNSHIP
 FRACTIONAL SECTION 1
 T-14 N; R-11 W
 HOLMES COUNTY, OHIO

SURVEYED FOR: ANDY MILLER

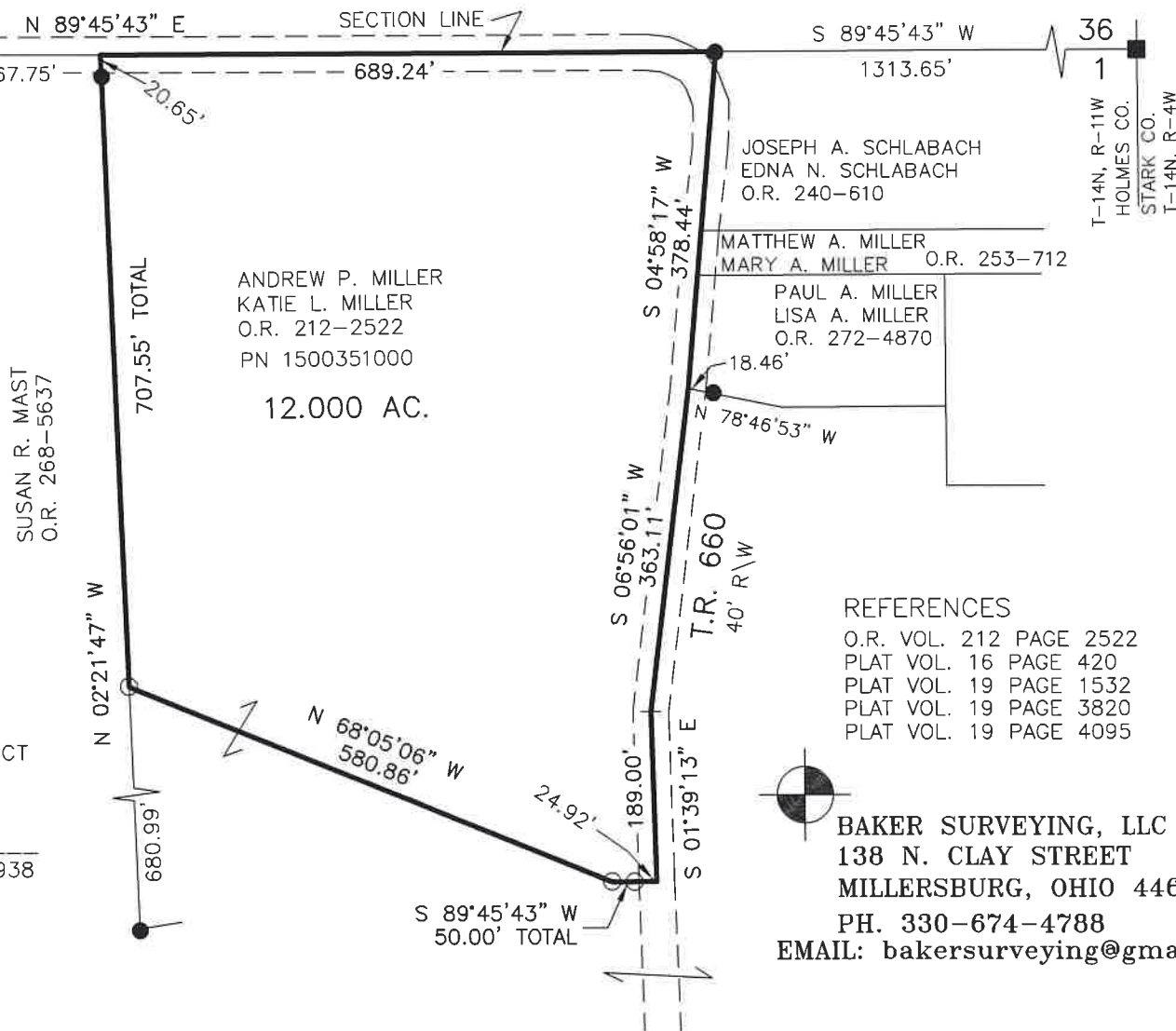
202400003759
 B: 19 P: 5393
 FILED FOR RECORD IN
 HOLMES COUNTY, OH
 ANITA HALL, COUNTY RECORDER
 10/03/2024 02:13 PM
 SMALL PLAT . 40.00
 PAGES: 1
 ORV 290 Pg 711

BASIS OF BEARINGS FROM
 OHIO STATE PLANE COORDINATE
 SYSTEM, NORTH ZONE, N.A.D. 83,
 2011 ADJUSTMENT



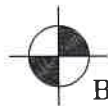
I CERTIFY THIS SURVEY TO BE CORRECT
 TO THE BEST OF MY KNOWLEDGE.

Donald C. Baker
 DONALD C. BAKER P.S. 6938
 DATE: SEPT. 12, 2024
 TAB\GRB
 FILE NAME: WORK6\S--463-24



REFERENCES

- O.R. VOL. 212 PAGE 2522
- PLAT VOL. 16 PAGE 420
- PLAT VOL. 19 PAGE 1532
- PLAT VOL. 19 PAGE 3820
- PLAT VOL. 19 PAGE 4095



BAKER SURVEYING, LLC
 138 N. CLAY STREET
 MILLERSBURG, OHIO 44654
 PH. 330-674-4788
 EMAIL: bakersurveying@gmail.com

APPROVED FOR TRANSFER ONLY
 NO SUBDIVISION PLAT REQUIRED

(O.R.C. 711.001 & 711.131)
 Lot(s) not for building unless
 approved by Board of Health



HOLMES CO. PLANNING COMMISSION

By AO Date 9/25/2024

Plat Approved

Holmes County Map Office

9/25/2024 Rg