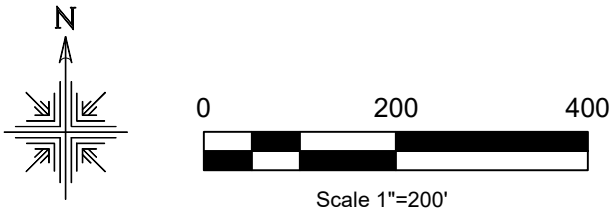


**Salt Creek Township**  
**4th Qtr. Lots 11 & 12**  
**T-10 N; R-6 W**  
**Holmes County, Ohio**  
 SURVEYED FOR: Roy Raber

202400003720  
 B: 19 P: 5387  
 FILED FOR RECORD IN  
 HOLMES COUNTY, OH  
 ANITA HALL, COUNTY RECORDER  
 10/02/2024 12:35 PM  
 SMALL PLAT . 40.00  
 PAGES: 1  
 ORV 290 Pg 565



**REFERENCES:**

Deeds as shown

- Plat Vol. 10 Page 340
- Plat Vol. 12 Page 895
- Plat Vol. 07 Page 606
- Plat Vol. 07 Page 376
- Plat Vol. 16 Page 342
- Unrecorded Survey by Donald C. Baker dated Feb. 27, 2007.

Basis of Bearing from Ohio State Plane Coordinate System, North Zone, NAD 83 (2011). Distances shown hereon are ground distances. To obtain grid distances multiply distances by scale factor of 0.99991985.

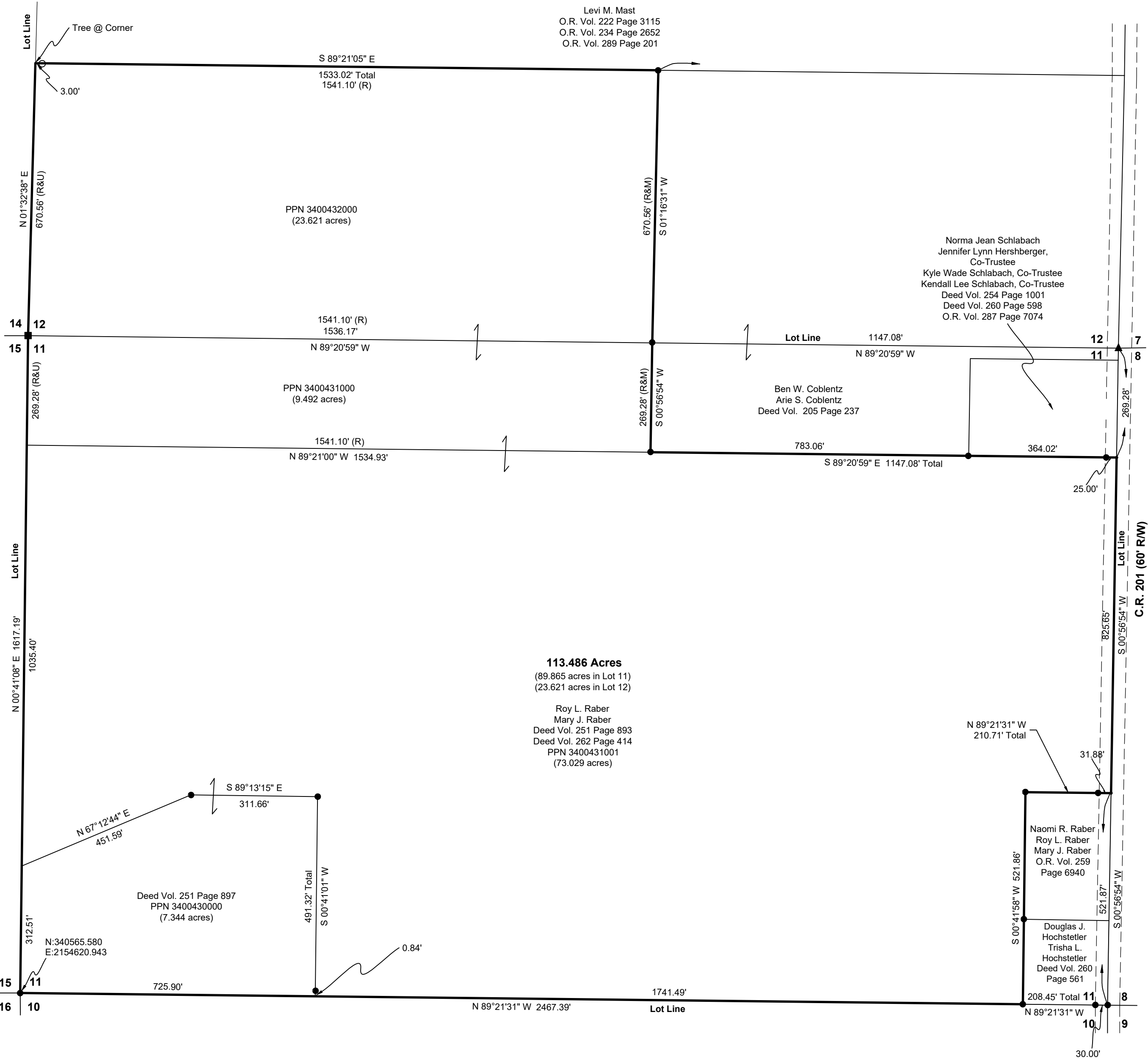
- 5/8" Capped Pin Set "Galbraith-8703"
- 5/8" Rebar Found
- Point
- ▲ Railroad Spike Found
- ⊙ 1/2" Iron Pipe Found
- Stone Found



I certify this survey to be correct to the best of my knowledge.

*Caleb Galbraith*

Caleb Jerome Galbraith P.S. 8703  
 Date: August 19, 2024  
 Job ID: 13324  
 Pioneer Surveying & Services, LLC.  
 5434 Township Road 377  
 Millersburg, Ohio 44654  
 Phone: 330-231-0497  
 Email: caleb@pioneersurveyingandservices.com



APPROVED FOR TRANSFER ONLY  
 NO SUBDIVISION PLAT REQUIRED  
 (O.R.C. 711.001 & 711.131)  
 Lot(s) not for building unless  
 approved by Board of Health  
 HOLMES CO. PLANNING COMMISSION  
 By AO Date 9/20/2024



**Plat Approved**  
 Holmes County Map Office  
9/18/2024 MM