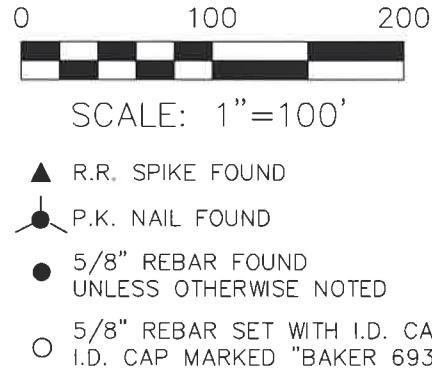


VILLAGE OF KILLBUCK
 KILLBUCK TOWNSHIP
 N.W. QTR. SECTION 15
 T-8 N; R-7 W
 HOLMES COUNTY, OHIO

SURVEYED FOR: KIRK SPURGEON



REFERENCES

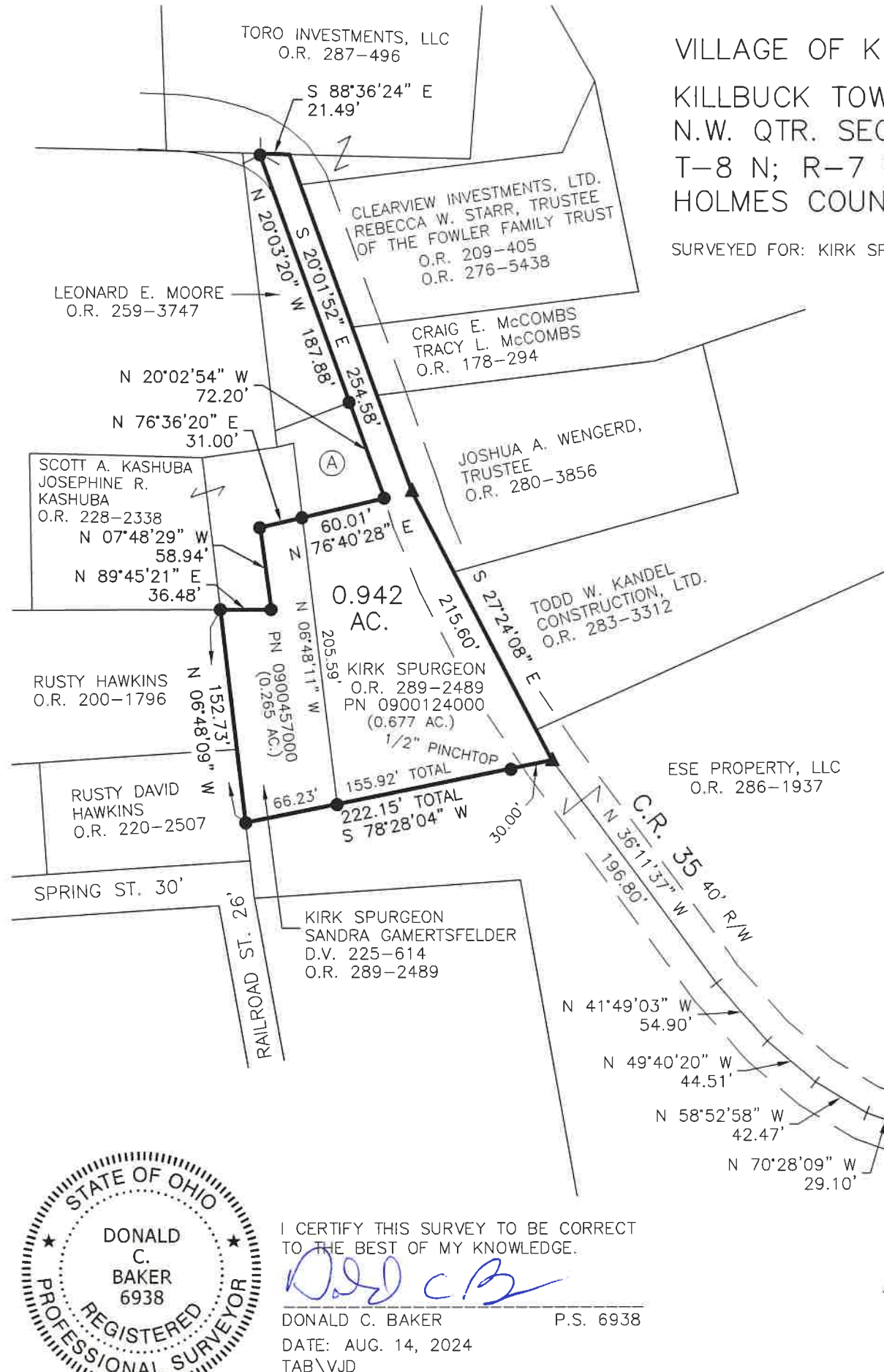
- DEED VOL. 187 PAGE 29
- DEED VOL. 225 PAGE 614
- O.R. VOL. 259 PAGE 3747
- O.R. VOL. 286 PAGE 1937
- PLAT VOL. 10 PAGE 338
- PLAT VOL. 16 PAGE 360
- PLAT VOL. 19 PAGE 1170
- PLAT VOL. 19 PAGE 3620

BASIS OF BEARINGS FROM OHIO STATE PLANE
 COORDINATE SYSTEM, NORTH ZONE,
 N.A.D. 83, 2011 ADJUSTMENT

MASTER PLAT

- ACTION 1) CONVEY 0.677 ACRES TO KIRK SPURGEON AND SANDRA GAMERTSFELDER
- ACTION 2) CONVEY 0.942 ACRES

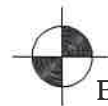
202400003379
 B: 19 P: 5375
 FILED FOR RECORD IN
 HOLMES COUNTY, OH
 ANITA HALL, COUNTY RECORDER
 09/06/2024 01:56 PM
 SMALL PLAT . 40.00
 PAGES: 1
 ORV 289 Pg 5970
 ORV 289 Pg 5973



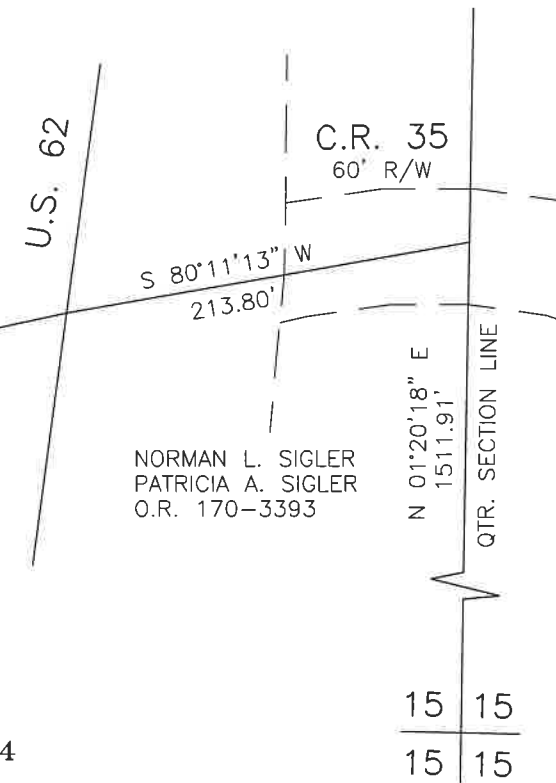
(A) BRIAN K. CLAYPOOL
 O.R. 277-6584



I CERTIFY THIS SURVEY TO BE CORRECT
 TO THE BEST OF MY KNOWLEDGE.
 DONALD C. BAKER P.S. 6938
 DATE: AUG. 14, 2024
 TAB\VJD
 FILE NAME: WORK5\S-378-24\NCK



BAKER SURVEYING, LLC
 138 N. CLAY STREET
 MILLERSBURG, OHIO 44654
 PH. 330-674-4788
 EMAIL: bakersurveying@gmail.com



APPROVED FOR TRANSFER ONLY
 NO SUBDIVISION PLAT REQUIRED
 (O.R.C. 711.001 & 711.131)
 Lot(s) not for building unless
 approved by Board of Health
 HOLMES CO. PLANNING COMMISSION
 By AO Date 9/3/2024

Plat Approved

Holmes County Map Office
 9/3/2024 MM

15 15
 15 15