

SCALE: 1"=60'

- ▲ R.R. SPIKE FOUND
- 5/8" REBAR FOUND  
UNLESS OTHERWISE NOTED
- 5/8" REBAR SET WITH I.D. CAP  
I.D. CAP MARKED "BAKER 6938"

BASIS OF BEARINGS FROM  
OHIO STATE PLANE COORDINATE  
SYSTEM, NORTH ZONE, N.A.D. 83,  
2011 ADJUSTMENT



I CERTIFY THIS SURVEY TO BE CORRECT  
TO THE BEST OF MY KNOWLEDGE.

*Donald C. Baker*

DONALD C. BAKER P.S. 6938  
DATE: JULY 3, 2024 REVISED: JULY 24, 2024  
KES  
FILE NAME: WORK6\S-309-24

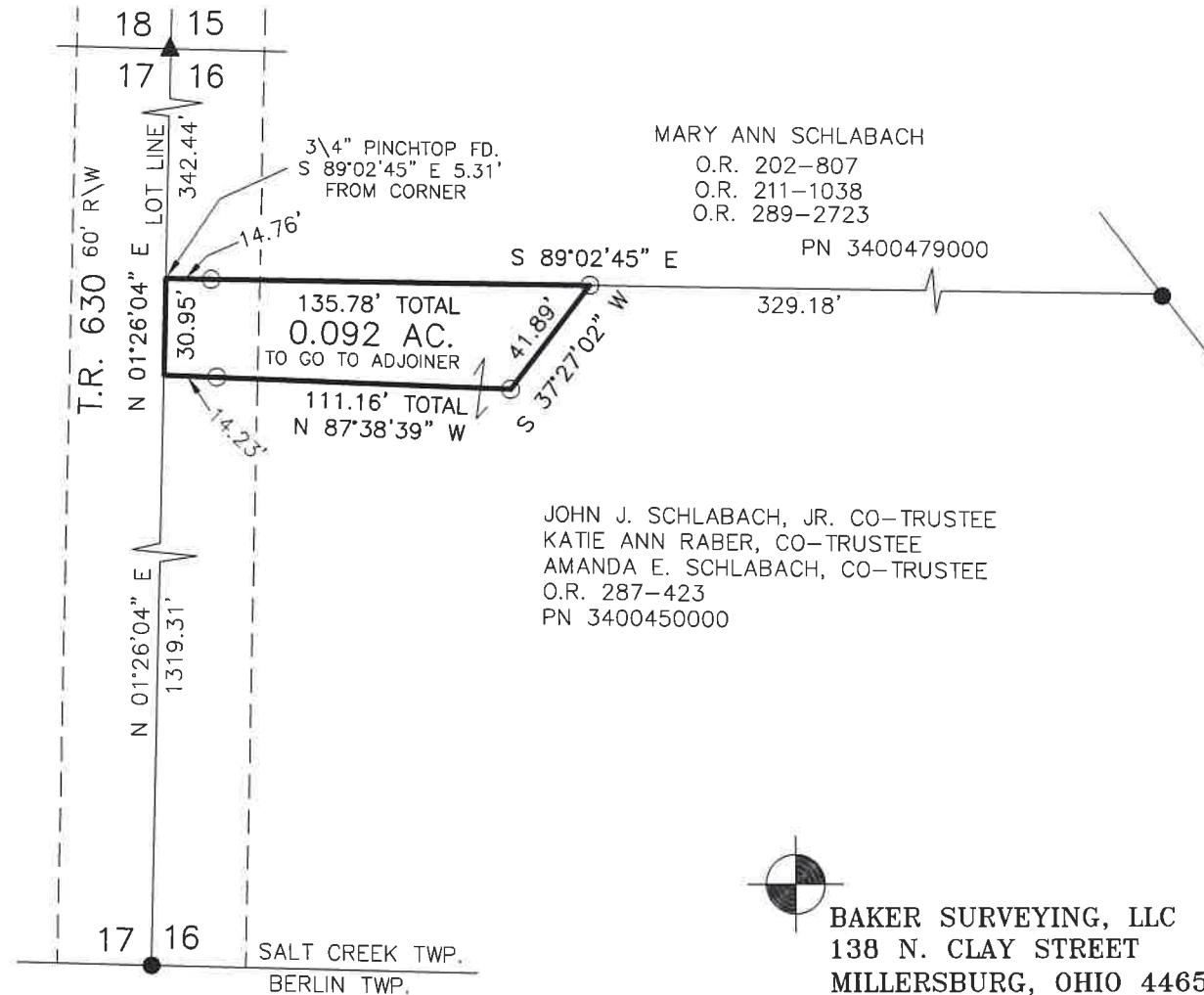
REFERENCES  
O.R. VOL. 287 PAGE 423  
PLAT VOL. 5 PAGE 13  
PLAT VOL. 11 PAGE 116  
PLAT VOL. 16 PAGE 689  
PLAT VOL. 19 PAGE 978  
PLAT VOL. 19 PAGE 4382

SALT CREEK TOWNSHIP  
4TH. QTR., LOT 16  
T-10 N; R-6 W  
HOLMES COUNTY, OHIO

SURVEYED FOR: JOHN SCHLABACH

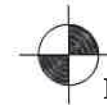
202400003137  
B: 19 P: 5367  
FILED FOR RECORD IN  
HOLMES COUNTY, OH  
ANITA HALL, COUNTY RECORDER  
08/22/2024 03:57 PM  
SMALL PLAT . 40.00  
PAGES: 1

ORV 289 Pg 4871



MARY ANN SCHLABACH  
O.R. 202-807  
O.R. 211-1038  
O.R. 289-2723  
PN 3400479000

JOHN J. SCHLABACH, JR. CO-TRUSTEE  
KATIE ANN RABER, CO-TRUSTEE  
AMANDA E. SCHLABACH, CO-TRUSTEE  
O.R. 287-423  
PN 3400450000



BAKER SURVEYING, LLC  
138 N. CLAY STREET  
MILLERSBURG, OHIO 44654  
PH. 330-674-4788  
EMAIL: bakersurveying@gmail.com

APPROVED FOR TRANSFER ONLY  
NO SUBDIVISION PLAT REQUIRED  
(O.R.C. 711.001 & 711.131)  
Lot(s) not for building unless  
approved by Board of Health  
HOLMES CO. PLANNING COMMISSION  
By AO Date 7/31/2024



**Plat Approved**  
Holmes County Map Office  
7/30/2024 Rg