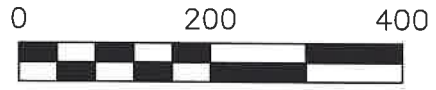


PRAIRIE TOWNSHIP
N.E. & N.W. QTRS. SECTION 28
T-14 N; R-13 W
HOLMES COUNTY, OHIO

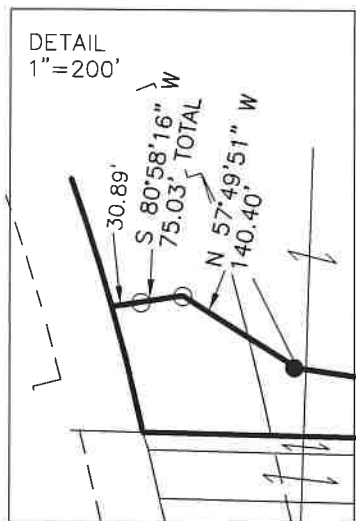
SURVEYED FOR: JIM CROSKY



SCALE: 1"=200'

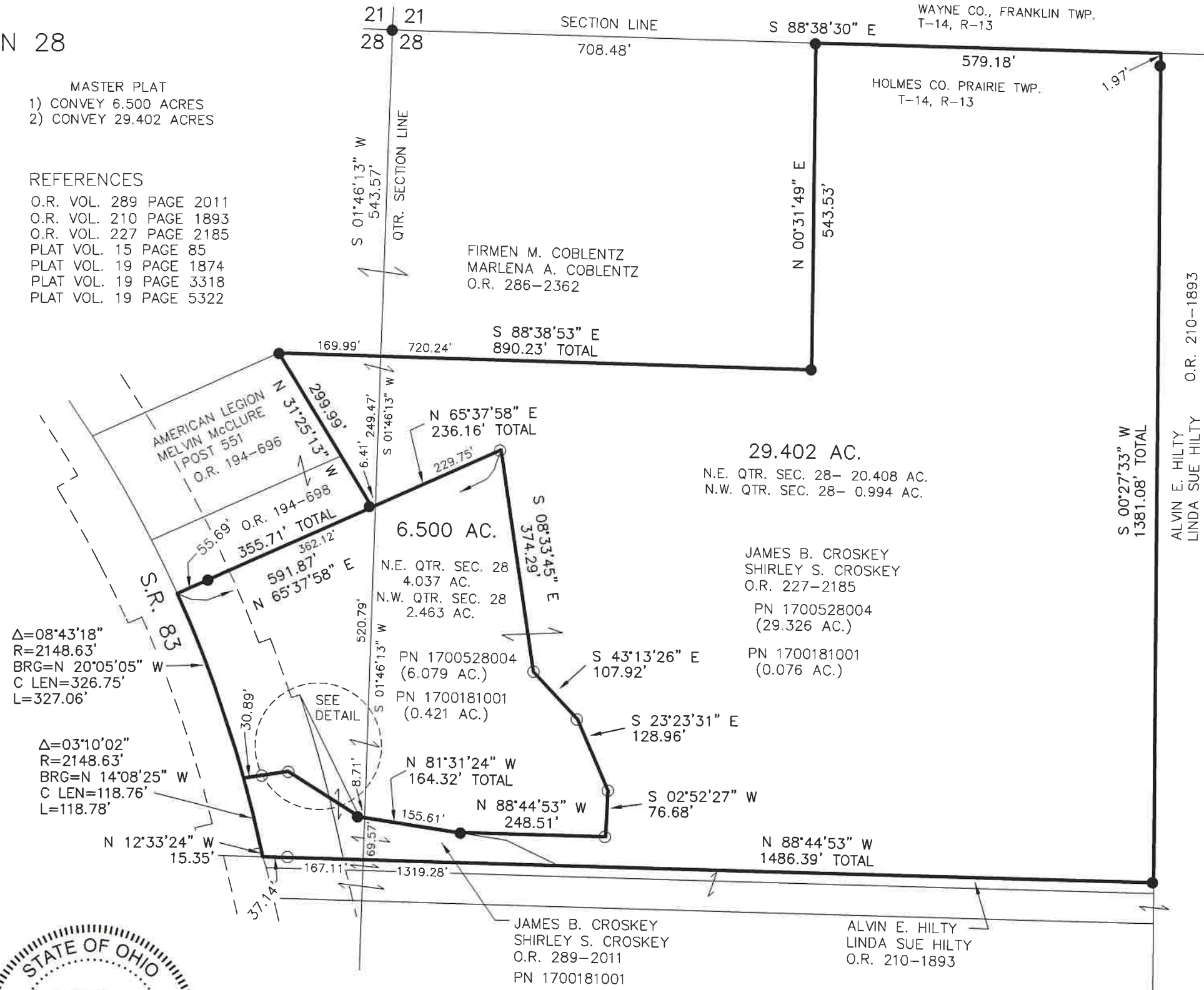
- 5/8" REBAR FOUND UNLESS OTHERWISE NOTED
- 5/8" REBAR SET WITH I.D. CAP I.D. CAP MARKED "BAKER 6938"

BASIS OF BEARINGS FROM OHIO STATE PLANE COORDINATE SYSTEM, NORTH ZONE, N.A.D. 83, 2011 ADJUSTMENT



MASTER PLAT
1) CONVEY 6.500 ACRES
2) CONVEY 29.402 ACRES

- REFERENCES
- O.R. VOL. 289 PAGE 2011
 - O.R. VOL. 210 PAGE 1893
 - O.R. VOL. 227 PAGE 2185
 - PLAT VOL. 15 PAGE 85
 - PLAT VOL. 19 PAGE 1874
 - PLAT VOL. 19 PAGE 3318
 - PLAT VOL. 19 PAGE 5322



20240003083
B: 19 P: 5363
FILED FOR RECORD IN
HOLMES COUNTY, OH
ANITA HALL, COUNTY RECORDER
08/19/2024 02:25 PM
SMALL PLAT . 40.00
PAGES: 1

ORV 289 Pg 4613
ORV 289 Pg 4617

APPROVED FOR TRANSFER ONLY
NO SUBDIVISION PLAT REQUIRED
(O.R.C. 711.001 & 711.131)
Lot(s) not for building unless approved by Board of Health
HOLMES CO. PLANNING COMMISSION
By AO Date 8/16/2024



I CERTIFY THIS SURVEY TO BE CORRECT TO THE BEST OF MY KNOWLEDGE.
Donald C. Baker
DONALD C. BAKER P.S. 6938
DATE: AUG. 7, 2024
TAB\VJD
FILE NAME: WORK6\S-194-24

BAKER SURVEYING, LLC
138 N. CLAY STREET
MILLERSBURG, OHIO 44654
PH. 330-674-4788
EMAIL: bakersurveying@gmail.com

Plat Approved
Holmes County Map Office
8/16/2024 Rg