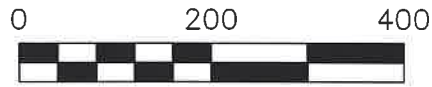


BERLIN TOWNSHIP
 N.W. QTR. SECTION 14
 T-9 N; R-5 W
 HOLMES COUNTY, OHIO

SURVEYED FOR: JOSEPH MILLER



SCALE: 1"=200'

- 5/8" REBAR FOUND
UNLESS OTHERWISE NOTED
- ▲ R.R. SPIKE FOUND
- MAG NAIL SET
- 5/8" REBAR SET WITH I.D. CAP
I.D. CAP MARKED "BAKER 6938"

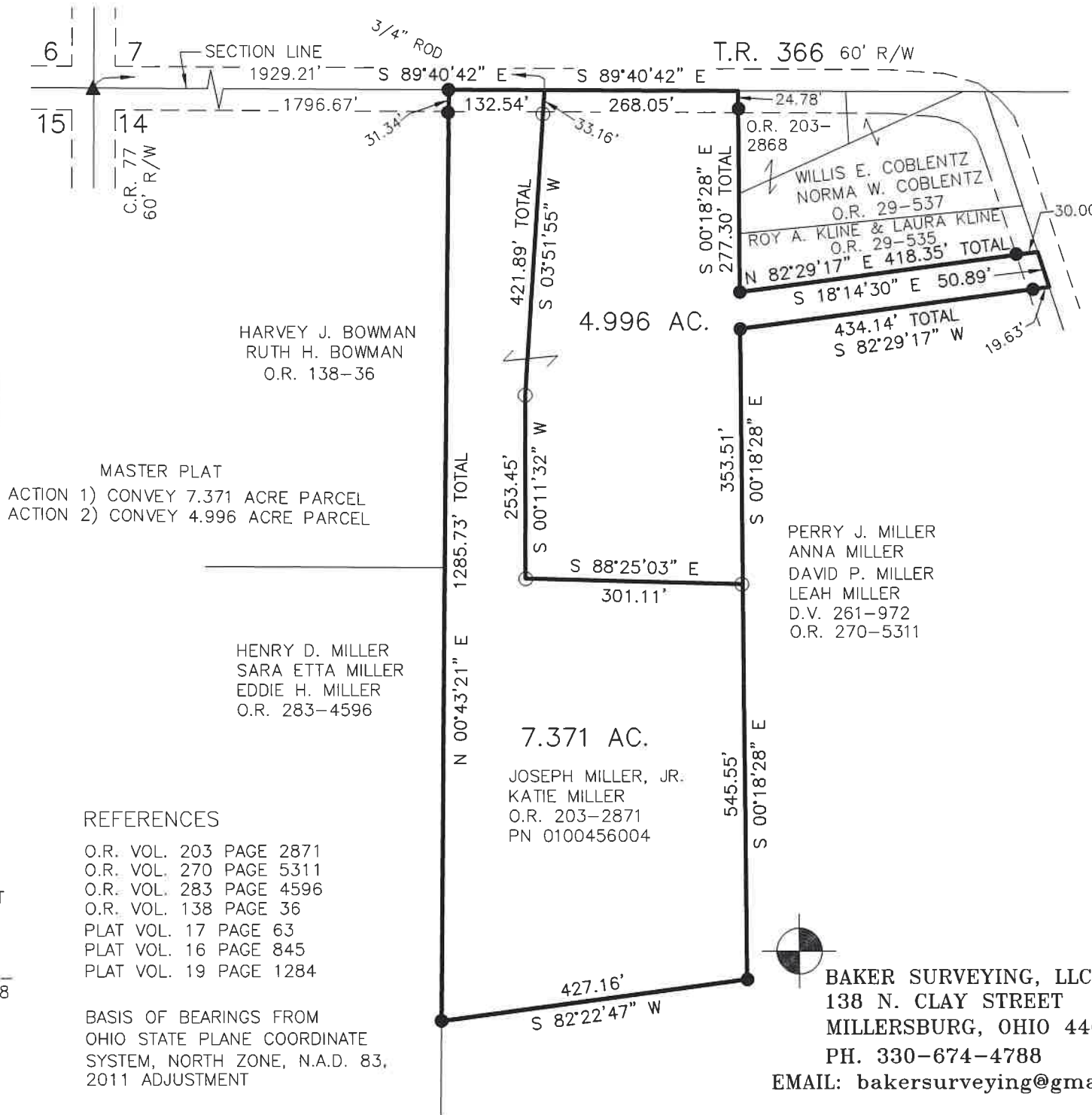


I CERTIFY THIS SURVEY TO BE CORRECT
 TO THE BEST OF MY KNOWLEDGE.

Donald C. Baker

DONALD C. BAKER P.S. 6938

DATE: APRIL 5, 2024
 REVISED: JUNE 20, 2024
 TAB
 FILE NAME: WORK6\S-155-24\CNK



REFERENCES

- O.R. VOL. 203 PAGE 2871
- O.R. VOL. 270 PAGE 5311
- O.R. VOL. 283 PAGE 4596
- O.R. VOL. 138 PAGE 36
- PLAT VOL. 17 PAGE 63
- PLAT VOL. 16 PAGE 845
- PLAT VOL. 19 PAGE 1284

BASIS OF BEARINGS FROM
 OHIO STATE PLANE COORDINATE
 SYSTEM, NORTH ZONE, N.A.D. 83,
 2011 ADJUSTMENT

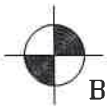
202400002747
 B: 19 P: 5336
 FILED FOR RECORD IN
 HOLMES COUNTY, OH
 ANITA HALL, COUNTY RECORDER
 7/26/2024 11:37 AM
 SMALL PLAT . 40.00
 PAGES: 1

ORV 289 PG 3019
 ORV 289 PG 3022

APPROVED FOR TRANSFER ONLY
 NO SUBDIVISION PLAT REQUIRED
 (O.R.C. 711.001 & 711.131)
 Lot(s) not for building unless
 approved by Board of Health
 HOLMES CO. PLANNING COMMISSION
 By AO Date 7/11/2024



Plat Approved
 Holmes County Map Office
 7/9/2024 MM



BAKER SURVEYING, LLC
 138 N. CLAY STREET
 MILLERSBURG, OHIO 44654
 PH. 330-674-4788
 EMAIL: bakersurveying@gmail.com