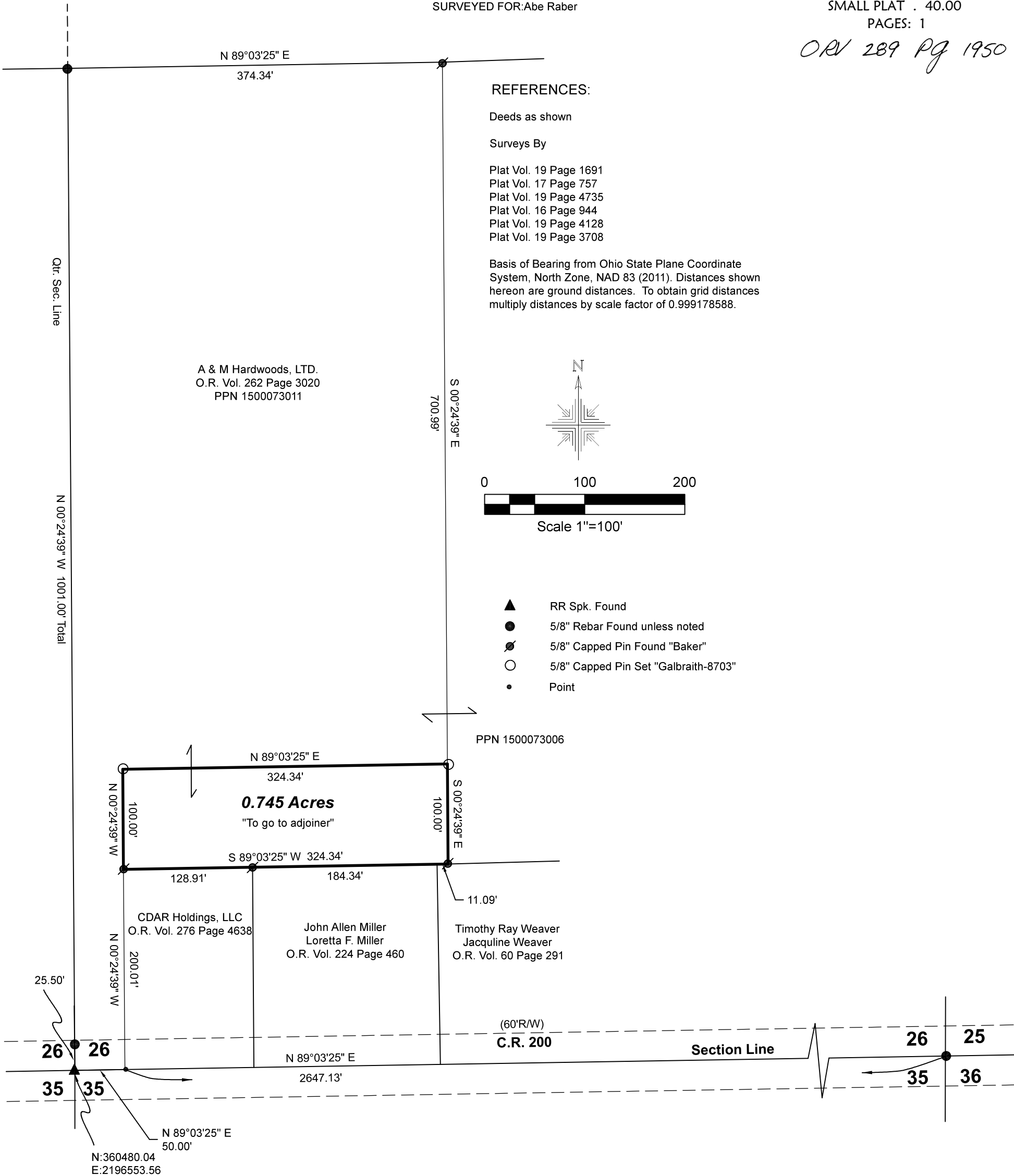


**Paint Township  
S.E. Qtr. Sec. 26  
T-15 N; R-11 W  
Holmes County, Ohio**

SURVEYED FOR: Abe Raber

202400002514  
B: 19 P: 5320  
FILED FOR RECORD IN  
HOLMES COUNTY, OH  
ANITA HALL, COUNTY RECORDER  
07/11/2024 11:17 AM  
SMALL PLAT . 40.00  
PAGES: 1

*ORV 289 Pg 1950*



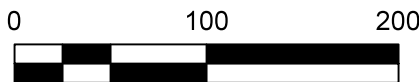
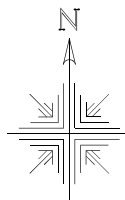
**REFERENCES:**

Deeds as shown

Surveys By

- Plat Vol. 19 Page 1691
- Plat Vol. 17 Page 757
- Plat Vol. 19 Page 4735
- Plat Vol. 16 Page 944
- Plat Vol. 19 Page 4128
- Plat Vol. 19 Page 3708

Basis of Bearing from Ohio State Plane Coordinate System, North Zone, NAD 83 (2011). Distances shown hereon are ground distances. To obtain grid distances multiply distances by scale factor of 0.999178588.



Scale 1"=100'

- ▲ RR Spk. Found
- 5/8" Rebar Found unless noted
- ⊙ 5/8" Capped Pin Found "Baker"
- 5/8" Capped Pin Set "Galbraith-8703"
- Point

I certify this survey to be correct to the best of my knowledge.

Caleb Jerome Galbraith P.S. 8703  
Date: June 20, 2024  
Job ID: 8424  
Pioneer Surveying & Services, LLC.  
5434 Township Road 377  
Millersburg, Ohio 44654  
Phone: 330-231-0497  
Email: caleb@pioneersurveyingandservices.com



APPROVED FOR TRANSFER ONLY  
NO SUBDIVISION PLAT REQUIRED  
(O.R.C. 711.001 & 711.131)  
Lot(s) not for building unless approved by Board of Health  
HOLMES CO. PLANNING COMMISSION  
By AO Date 7/8/2024



**Plat Approved**  
Holmes County Map Office  
7/8/2024 MM