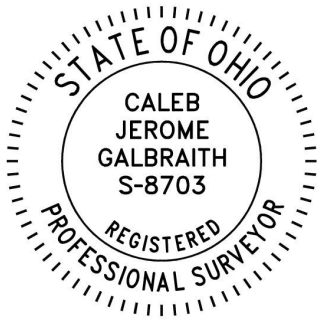


**Richland Township
S.E. Qtr. Section 2
T-8 N; R-9 W
Holmes County, Ohio**

REFERENCES: SURVEYED FOR: Nancy Small
Deeds as shown

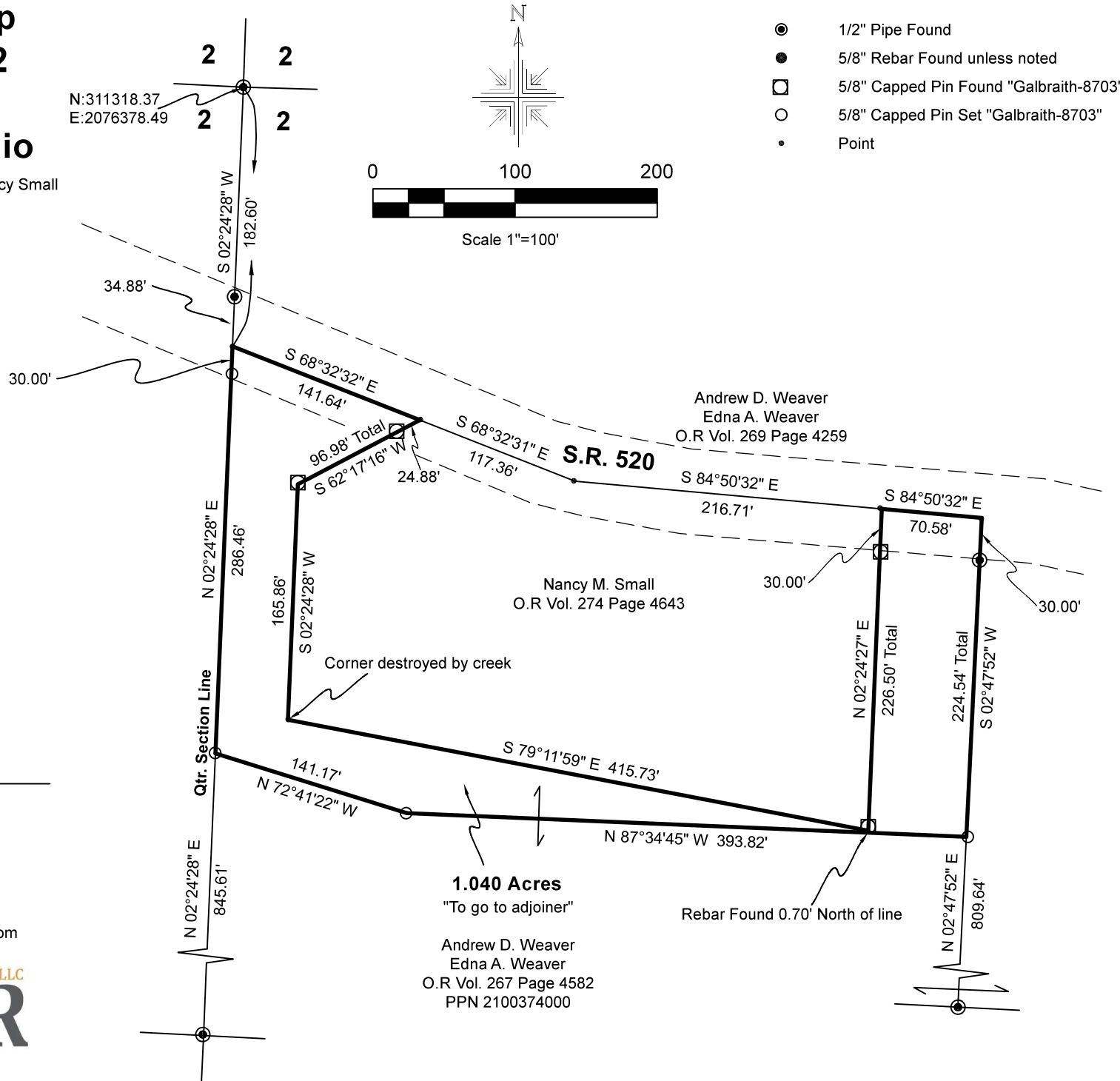
Plat Vol 19 Page 3542
Plat Vol. 19 Page 3918
Plat Vol 9 Page 40

Basis of Bearing from Ohio State Plane
Coordinate System, North Zone, NAD 83
(2011). Distances shown hereon are ground
distances. To obtain grid distances multiply
distances by scale factor of 0.999944568



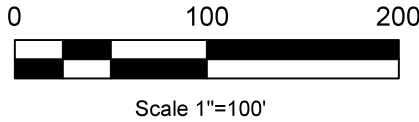
I certify this survey to be correct to the best of
my knowledge.

Caleb Jerome Galbraith P.S. 8703
Date: June 18, 2024
Job ID: 7524
Pioneer Surveying & Services, LLC.
5434 Township Road 377
Millersburg, Ohio 44654
Phone: 330-231-0497
Email: caleb@pioneersurveyingandservices.com



1.040 Acres
"To go to adjoiner"
Andrew D. Weaver
Edna A. Weaver
O.R Vol. 267 Page 4582
PPN 2100374000

- 1/2" Pipe Found
- 5/8" Rebar Found unless noted
- 5/8" Capped Pin Found "Galbraith-8703"
- 5/8" Capped Pin Set "Galbraith-8703"
- Point



202400002498

B: 19 P: 5318
FILED FOR RECORD IN
HOLMES COUNTY, OH
ANITA HALL, COUNTY RECORDER
07/10/2024 01:54 PM
SMALL PLAT . 40.00
PAGES: 1

ORV 289 Pg 1894

APPROVED FOR TRANSFER ONLY
NO SUBDIVISION PLAT REQUIRED
(O.R.C. 711.001 & 711.131)
Lot(s) not for building unless
approved by Board of Health
HOLMES CO. PLANNING COMMISSION
By AO Date 7/1/2024



Plat Approved
Holmes County Map Office
7/1/2024 MM