

ORV 289 Pg 1644

PrairieTownship
N.E. Qtr. Section 32
T-14 N; R-13 W
Holmes County, Ohio

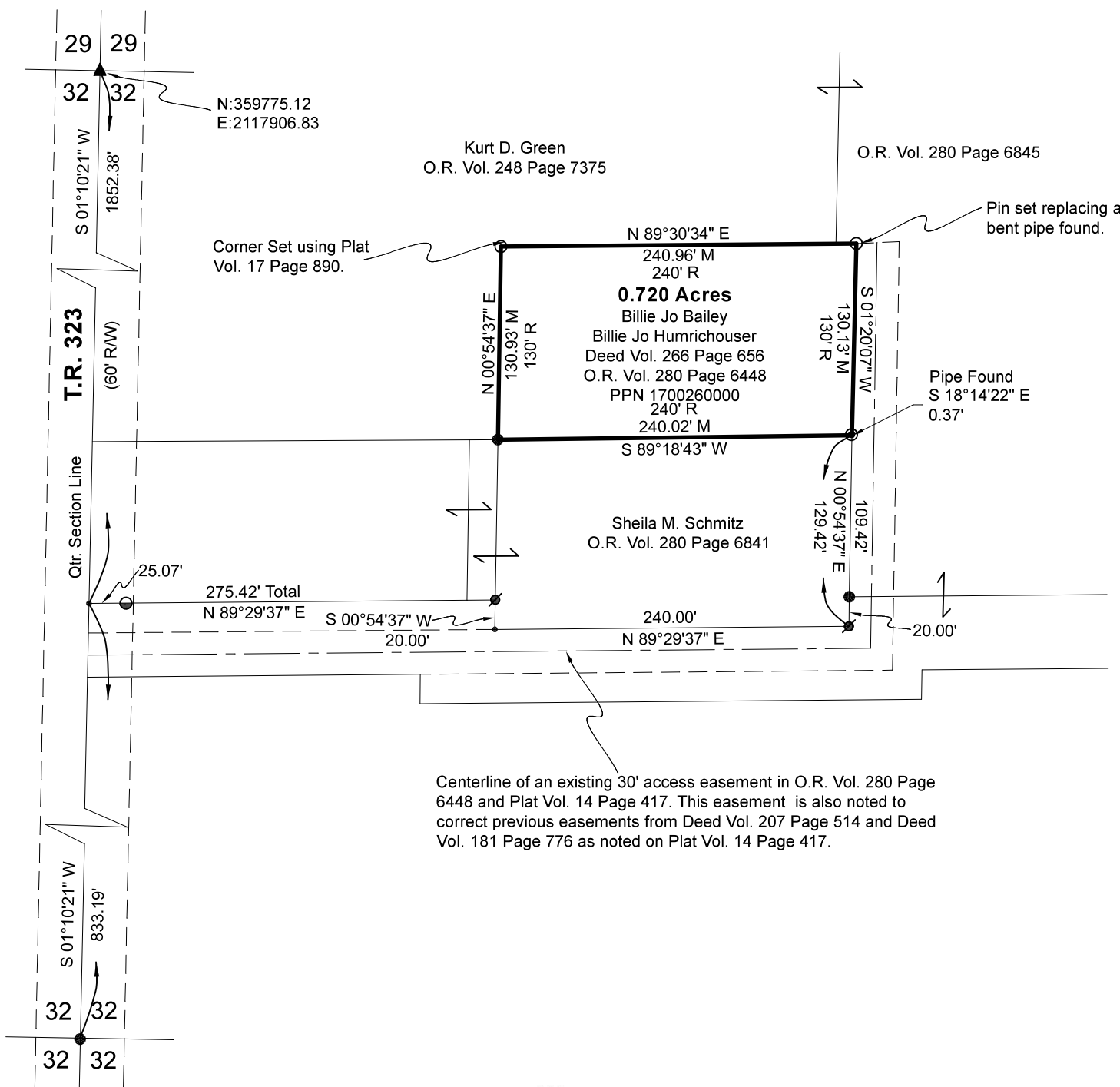
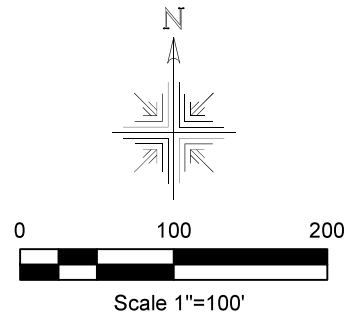
SURVEYED FOR: Tina Owens

REFERENCES:

- Deeds as shown
- Plat Vol. 17 Page 890
- Plat Vol. 5 Page 78
- Plat Vol. 14 Page 485
- Plat Vol. 17 Page 891
- Plat Vol. 16 Page 630
- Plat Vol. 14 Page 417

Basis of Bearing: Grid North, Ohio State Plane
Coordinate System Ohio North Zone, NAD 83
(2011). Distances shown hereon are ground
distances. To obtain grid distances multiply
distances by scale factor of 0.99992599

- ⊙ 1/2" Pipe Found
- 5/8" Rebar Found unless noted
- ⊘ 5/8" Capped Pin Found "Shamp"
- 5/8" Capped Pin Set "Galbraith-8703"
- ⊖ 5/8" Capped Pin Found "Baker"
- ▲ R.R. Spk. Found
- Point



Centerline of an existing 30' access easement in O.R. Vol. 280 Page 6448 and Plat Vol. 14 Page 417. This easement is also noted to correct previous easements from Deed Vol. 207 Page 514 and Deed Vol. 181 Page 776 as noted on Plat Vol. 14 Page 417.



APPROVED FOR TRANSFER ONLY
NO SUBDIVISION PLAT REQUIRED
(O.R.C. 711.001 & 711.131)
Lot(s) not for building unless approved by Board of Health
HOLMES CO. PLANNING COMMISSION
By AO Date 7/1/2024



Pioneer Surveying & Services, LLC.
5434 Township Road 377
Millerburg, Ohio 44654
Phone: 330-231-0497
Email: caleb@pioneersurveyingandservices.com

I certify this survey to be correct to the best of my knowledge

Caleb Jerome Galbraith P.S. 8703
Date: June 14, 2024
Job ID: 8924

Plat Approved
Holmes County Map Office
6/27/2024 Rg

