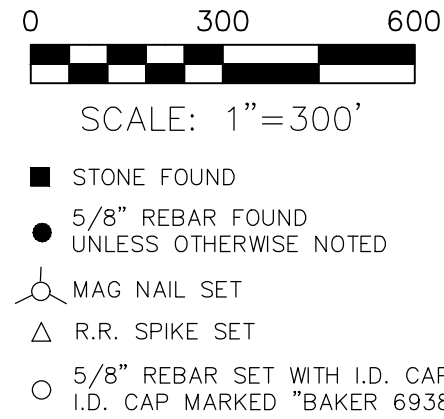


PRAIRIE TOWNSHIP
 N.E. QTR. FRACTIONAL SECTION 14
 T-13 N; R-13 W
 4TH QTR., LOTS 2 & 9
 T-10 N; R-7 W
 HOLMES COUNTY, OHIO
 SURVEYED FOR: WAYNE SCHLABACH



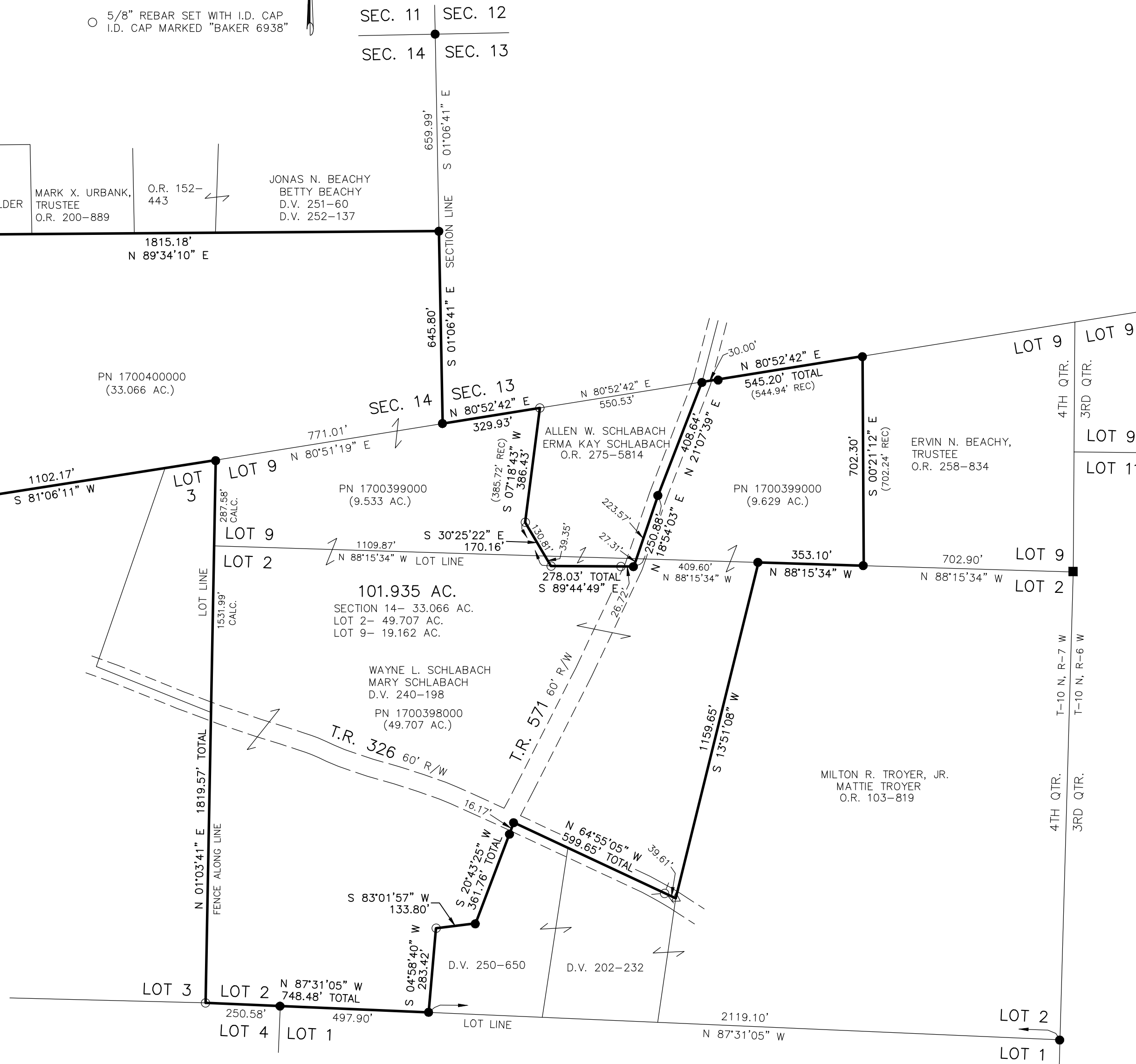
20240002321
 B: 19 P: 5307
 FILED FOR RECORD IN
 HOLMES COUNTY, OH
 ANITA HALL, COUNTY RECORDER
 06/27/2024 09:11 AM
 SMALL PLAT . 40.00
 PAGES: 1
ORV 289 Pg 1076

- REFERENCES
- DEED VOL. 240 PAGE 198
 - O.R. VOL. 103 PAGE 819
 - O.R. VOL. 258 PAGE 834
 - O.R. VOL. 271 PAGE 4889
 - PLAT VOL. 12 PAGE 706
 - PLAT VOL. 10 PAGE 607
 - PLAT VOL. 11 PAGE 151
 - PLAT VOL. 14 PAGE 82
 - PLAT VOL. 8 PAGE 210
 - PLAT VOL. 12 PAGE 621
 - PLAT VOL. 12 PAGE 81
 - PLAT VOL. 18 PAGE 836
 - PLAT VOL. 19 PAGE 2797
 - PLAT VOL. 19 PAGE 3084

BASIS OF BEARINGS FROM
 OHIO STATE PLANE COORDINATE
 SYSTEM, NORTH ZONE, N.A.D. 83,
 2011 ADJUSTMENT



I CERTIFY THIS SURVEY TO BE CORRECT
 TO THE BEST OF MY KNOWLEDGE.
Donald C. Baker
 DONALD C. BAKER P.S. 6938
 DATE: APRIL 24, 2024
 TAB\GRB\VDJ
 FILE NAME: WORK6\S-95-24\CNK



APPROVED FOR TRANSFER ONLY
 NO SUBDIVISION PLAT REQUIRED
 (O.R.C. 711.001 & 711.131)
 Lot(s) not for building unless
 approved by Board of Health
 HOLMES CO. PLANNING COMMISSION
 By TS Date 6/21/2024

BAKER SURVEYING, LLC
 138 N. CLAY STREET
 MILLERSBURG, OHIO 44654
 PH. 330-674-4788
 EMAIL: bakersurveying@gmail.com

Plat Approved
 Holmes County Map Office
 6/21/2024 Rg