

**Walnut Creek Township
S.W. Qtr. Sec. 22
T-9 N; R-5 W
Holmes County, Ohio**

SURVEYED FOR: Paul Stutzman

REFERENCES:

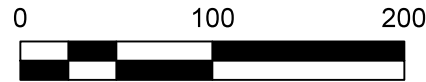
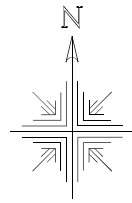
Deeds as shown

- Plat Vol. 8 Page 518
- Plat Vol. 18 Page 780
- Plat Vol. 10 Page 851
- Plat Vol. 14 Page 405

- 5/8" Rebar Found
- ⊙ 3/4" Rebar Found
- 5/8" Capped Pin Set "Galbraith"
- Point

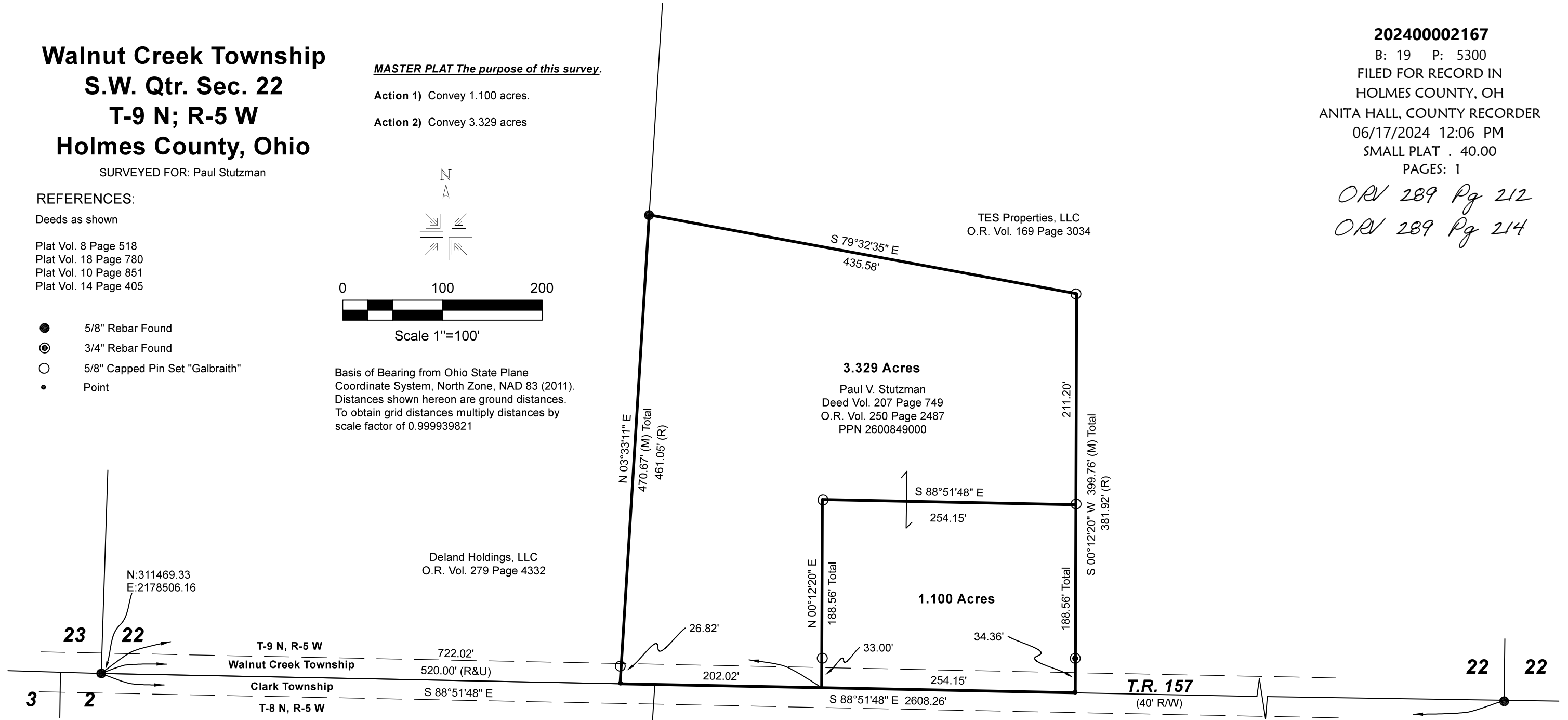
MASTER PLAT The purpose of this survey.

- Action 1) Convey 1.100 acres.
- Action 2) Convey 3.329 acres



Scale 1"=100'

Basis of Bearing from Ohio State Plane
Coordinate System, North Zone, NAD 83 (2011).
Distances shown hereon are ground distances.
To obtain grid distances multiply distances by
scale factor of 0.999939821



202400002167
B: 19 P: 5300
FILED FOR RECORD IN
HOLMES COUNTY, OH
ANITA HALL, COUNTY RECORDER
06/17/2024 12:06 PM
SMALL PLAT . 40.00
PAGES: 1

ORV 289 Pg 212
ORV 289 Pg 214



I certify this survey to be correct to the best of my knowledge.

Caleb Galbraith

Caleb Jerome Galbraith P.S. 8703
Date: March 14, 2024
Job ID: 4524-WC07
Drawn By: CMB

APPROVED FOR TRANSFER ONLY
NO SUBDIVISION PLAT REQUIRED
(O.R.C. 711.001 & 711.131)
Lot(s) not for building unless approved by Board of Health
HOLMES CO. PLANNING COMMISSION
By TS Date 6/14/2024



Plat Approved

Holmes County Map Office
6/6/2024 MM

Pioneer Surveying & Services, LLC.
5434 Township Road 377
Millersburg, Ohio 44654
Phone: 330-231-0497
Email: caleb@pioneersurveyingandservices.com

