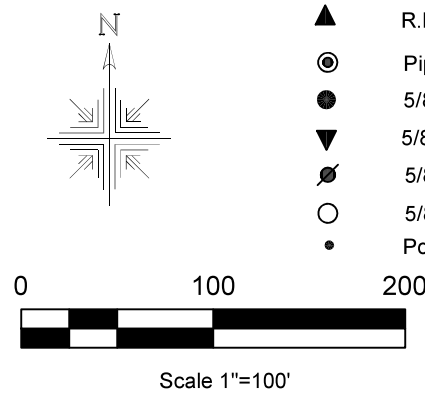


Berlin Township
3rd Qtr. Lot 29
T-9 N; R-5 W
Holmes County, Ohio

SURVEYED FOR: Dan Frey

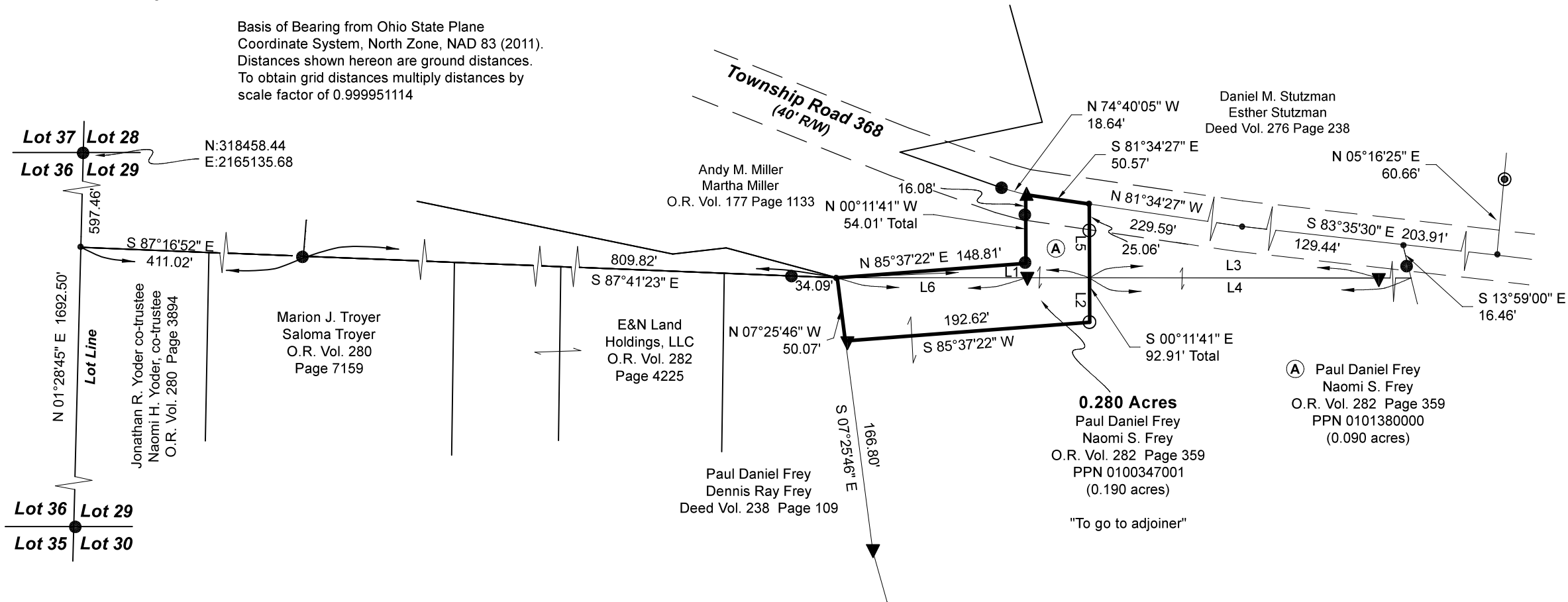
REFERENCES:
 Deeds as shown

- | | |
|------------------------|-----------------------|
| Plat Vol. 19 Page 1639 | Plat Vol. 10 Page 247 |
| Plat Vol. 19 Page 294 | Plat Vol. 18 Page 87 |
| Plat Vol. 19 Page 280 | Plat Vol. 10 Page 651 |
| Plat Vol. 19 Page 4772 | Plat Vol. 16 Page 288 |
| Plat Vol. 18 Page 773 | Plat Vol. 11 Page 180 |



LINE	BEARING	DISTANCE
L1	S 89°59'31" E	198.41'
L2	S 00°11'41" E	34.92'
L3	S 89°59'31" E	226.83'
L4	S 89°59'31" E	357.99'
L5	S 00°11'41" E	57.99'
L6	S 89°59'31" E	148.27'

Basis of Bearing from Ohio State Plane
 Coordinate System, North Zone, NAD 83 (2011).
 Distances shown hereon are ground distances.
 To obtain grid distances multiply distances by
 scale factor of 0.999951114



20240002117
 B: 19 P: 5298
 FILED FOR RECORD IN
 HOLMES COUNTY, OH
 ANITA HALL, COUNTY RECORDER
 06/13/2024 01:39 PM
 SMALL PLAT . 40.00
 PAGES: 1
ORV 288 Pg 7461

Pioneer Surveying & Services, LLC.
 5434 Township Road 377
 Millersburg, Ohio 44654
 Phone: 330-231-0497
 Email: caleb@pioneersurveyingandservices.com

I certify this survey to be correct to the best of
 my knowledge.

Caleb Jerome Galbraith
 P.S. 8703
 Date: April 9, 2024
 Job ID: 2824-B17



APPROVED FOR TRANSFER ONLY
 NO SUBDIVISION PLAT REQUIRED
 (O.R.C. 711.001 & 711.131)
 Lot(s) not for building unless
 approved by Board of Health
 HOLMES CO. PLANNING COMMISSION
 By AO Date 5/29/2024



Plat Approved
 Holmes County Map Office
 5/30/2024 Rg

