

MECHANIC TOWNSHIP
 S.W. QTR. SECTION 12
 T-8 N; R-7 W
 HOLMES COUNTY, OHIO

SURVEYED FOR: JOSEPH WENGERD



SCALE: 1"=200'

- STONE FOUND
- ▲ R.R. SPIKE FOUND
- 5/8" REBAR SET WITH I.D. CAP
I.D. CAP MARKED "BAKER 6938"



I CERTIFY THIS SURVEY TO BE CORRECT
 TO THE BEST OF MY KNOWLEDGE.

Donald C. Baker

DONALD C. BAKER P.S. 6938

DATE: FEB. 13, 2024

KES

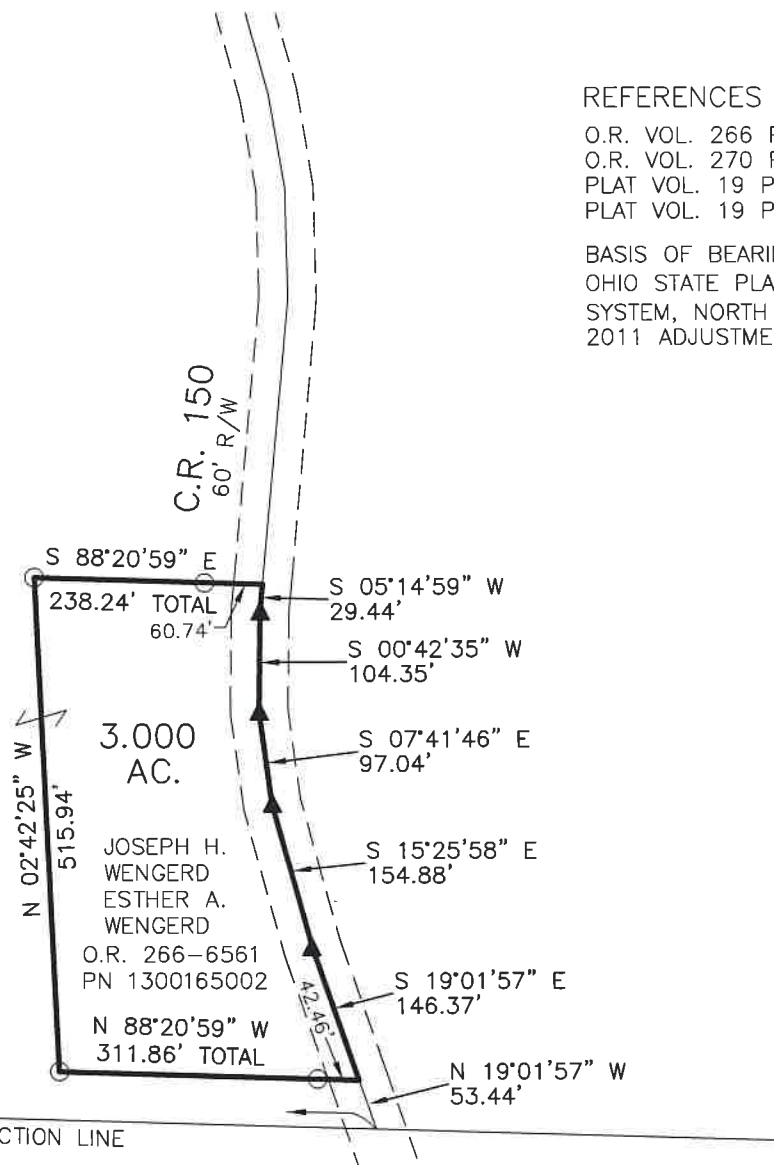
FILE NAME: WORK6\S-56-24\CNK

6"x12" STONE
 WITH "X"

13 | 12
 18 | 19

1348.52'

S 88°20'59" E SECTION LINE



REFERENCES

O.R. VOL. 266 PAGE 6561
 O.R. VOL. 270 PAGE 5804
 PLAT VOL. 19 PAGE 3677
 PLAT VOL. 19 PAGE 3988

BASIS OF BEARINGS FROM
 OHIO STATE PLANE COORDINATE
 SYSTEM, NORTH ZONE, N.A.D. 83,
 2011 ADJUSTMENT

20240002104

B: 19 P: 5297

FILED FOR RECORD IN
 HOLMES COUNTY, OH

ANITA HALL, COUNTY RECORDER

06/12/2024 11:13 AM

SMALL PLAT . 40.00

PAGES: 1

ORV 288 Pg 7404

APPROVED FOR TRANSFER ONLY
 NO SUBDIVISION PLAT REQUIRED

(O.R.C. 711.001 & 711.131)

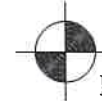
Lot(s) not for building unless
 approved by Board of Health



HOLMES CO. PLANNING COMMISSION

By AO Date 5/29/2024

TS 6/12/2024



BAKER SURVEYING, LLC
 138 N. CLAY STREET
 MILLERSBURG, OHIO 44654

PH. 330-674-4788

EMAIL: bakersurveying@gmail.com

Plat Approved

Holmes County Map Office

5/1/2024 MM