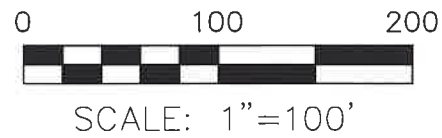


BERLIN TOWNSHIP
 N.E. QTR. SECTION 4
 T-9 N; R-5 W
 HOLMES COUNTY, OHIO

SURVEYED FOR: PAUL KAUFFMAN



- ▲ R.R. SPIKE FOUND
- △ R.R. SPIKE SET
- 5/8" REBAR SET WITH I.D. CAP
I.D. CAP MARKED "BAKER 6938"

REFERENCES

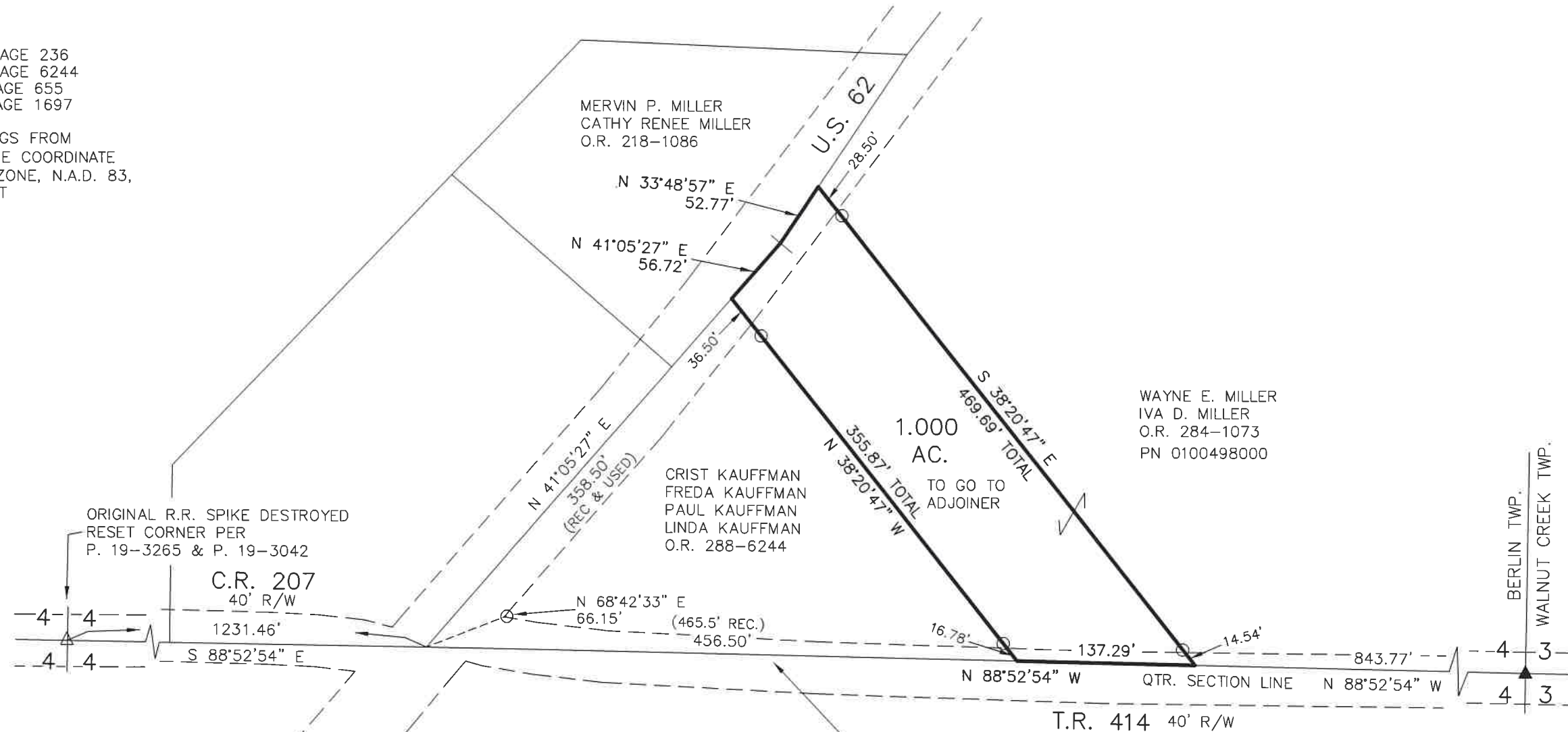
O.R. VOL. 144 PAGE 236
 O.R. VOL. 288 PAGE 6244
 PLAT VOL. 18 PAGE 655
 PLAT VOL. 19 PAGE 1697

BASIS OF BEARINGS FROM
 OHIO STATE PLANE COORDINATE
 SYSTEM, NORTH ZONE, N.A.D. 83,
 2011 ADJUSTMENT

202400002074

B: 19 P: 5295
 FILED FOR RECORD IN
 HOLMES COUNTY, OH
 ANITA HALL, COUNTY RECORDER
 06/10/2024 03:06 PM
 SMALL PLAT . 40.00
 PAGES: 1

ORV288 PG 7242

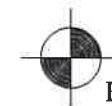


NOTES ON THIS DISTANCE:
 O.R. 288 PG. 6244 CALLS OUT 465.50', BUT
 DOES NOT CLOSE BY 10.41' IN A EAST WEST
 DIRECTION. THE EXCEPTION ON O.R. 284 PG. 1073
 CALLS OUT 456.50' AND THE CLOSURE IS 1.41'
 IT ALSO HITS THE PHYSICAL OCCUPATION.
 I HELD 456.50' AND BELIEVE IT BEST REPRESENTS
 THE INTENT OF THE DEED.



I CERTIFY THIS SURVEY TO BE CORRECT
 TO THE BEST OF MY KNOWLEDGE.

Donald C. Baker
 DONALD C. BAKER P.S. 6938
 DATE: MAY 23, 2024
 TAB
 FILE NAME: WORK6\S-224-24\CNK



BAKER SURVEYING, LLC
 138 N. CLAY STREET
 MILLERSBURG, OHIO 44654
 PH. 330-674-4788
 EMAIL: bakersurveying@gmail.com

APPROVED FOR TRANSFER ONLY
 NO SUBDIVISION PLAT REQUIRED
 (O.R.C. 711.001 & 711.131)
 Lot(s) not for building unless
 approved by Board of Health
 HOLMES CO. PLANNING COMMISSION
 By TS Date 6/10/2024



Plat Approved
 Holmes County Map Office
 5/31/2024 MM