

VILLAGE OF WALNUT CREEK
PART OF OUTLOT 12

WALNUT CREEK TOWNSHIP
S.W. QTR. SECTION 20
T-9 N; R-5 W
HOLMES COUNTY, OHIO

SURVEYED FOR: KAUFMAN REALTY

0 100 200



SCALE: 1"=100'

- ▲ R.R. SPIKE FOUND
- 5/8" REBAR FOUND
UNLESS OTHERWISE NOTED
- 5/8" REBAR SET WITH I.D. CAP
I.D. CAP MARKED "BAKER 6938"



I CERTIFY THIS SURVEY TO BE CORRECT
TO THE BEST OF MY KNOWLEDGE.

Donald C. Baker

DONALD C. BAKER P.S. 6938
DATE: APRIL 11, 2024
TAB
FILE NAME: WORK6\S-165-24\CNK

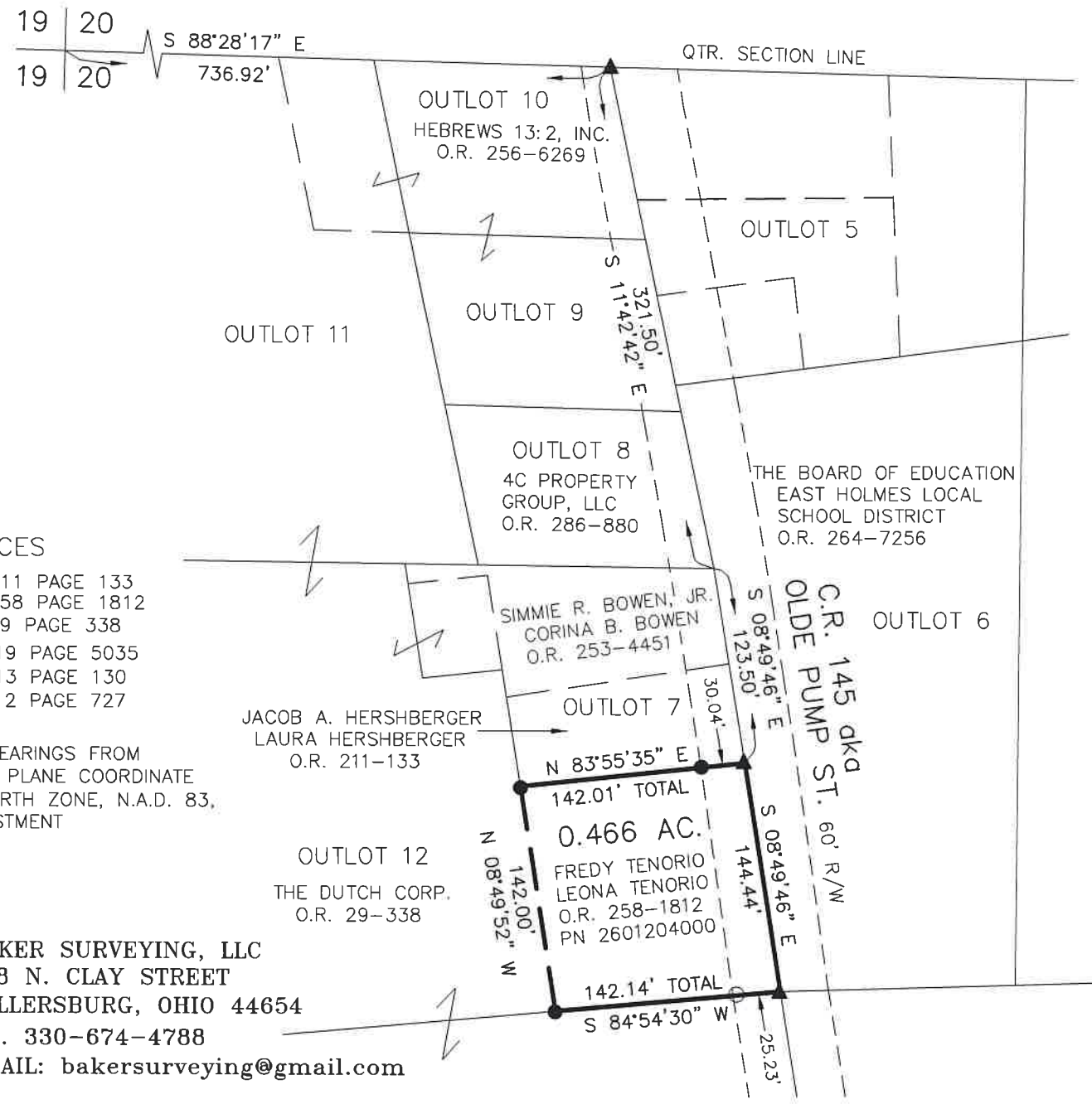
REFERENCES

- O.R. VOL. 211 PAGE 133
- O.R. VOL. 258 PAGE 1812
- O.R. VOL. 29 PAGE 338
- PLAT VOL. 19 PAGE 5035
- PLAT VOL. 13 PAGE 130
- PLAT VOL. 12 PAGE 727

BASIS OF BEARINGS FROM
OHIO STATE PLANE COORDINATE
SYSTEM, NORTH ZONE, N.A.D. 83,
2011 ADJUSTMENT



BAKER SURVEYING, LLC
138 N. CLAY STREET
MILLERSBURG, OHIO 44654
PH. 330-674-4788
EMAIL: bakersurveying@gmail.com



202400001447

B: 19 P: 5262
FILED FOR RECORD IN
HOLMES COUNTY, OH
ANITA HALL, COUNTY RECORDER
04/23/2024 01:30 PM
SMALL PLAT . 40.00
PAGES: 1

ORV 288 Pg 4356
ORV 288 Pg 4360

APPROVED FOR TRANSFER ONLY
NO SUBDIVISION PLAT REQUIRED

(O.R.C. 711.001 & 711.131)
Lot(s) not for building unless
approved by Board of Health



HOLMES CO. PLANNING COMMISSION

By TS Date 4/23/2024

Plat Approved

Holmes County Map Office

4/18/2024 Rg