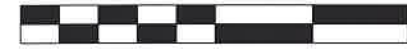


VILLAGE OF BALTIC  
 CLARK TOWNSHIP  
 S.W. QTR. SECTION 25  
 T-8 N; R-4 W  
 HOLMES COUNTY, OHIO

SURVEYED FOR: NATHAN WAGLER

0 100 200



SCALE: 1"=100'

- STONE FOUND
- 5/8" REBAR FOUND  
UNLESS OTHERWISE NOTED
- 5/8" REBAR SET WITH I.D. CAP  
I.D. CAP MARKED "BAKER 6938"
- MAG NAIL SET

REFERENCES

- DEED VOL. 214 PAGE 620
- O.R. VOL. 197 PAGE 420
- O.R. VOL. 271 PAGE 5455
- O.R. VOL. 161 PAGE 414
- PLAT VOL. 14 PAGE 437
- PLAT VOL. 18 PAGE 405
- PLAT VOL. 19 PAGE 2119

BASIS OF BEARINGS FROM OHIO STATE PLANE  
 COORDINATE SYSTEM, NORTH ZONE,  
 N.A.D. 83, 2011 ADJUSTMENT

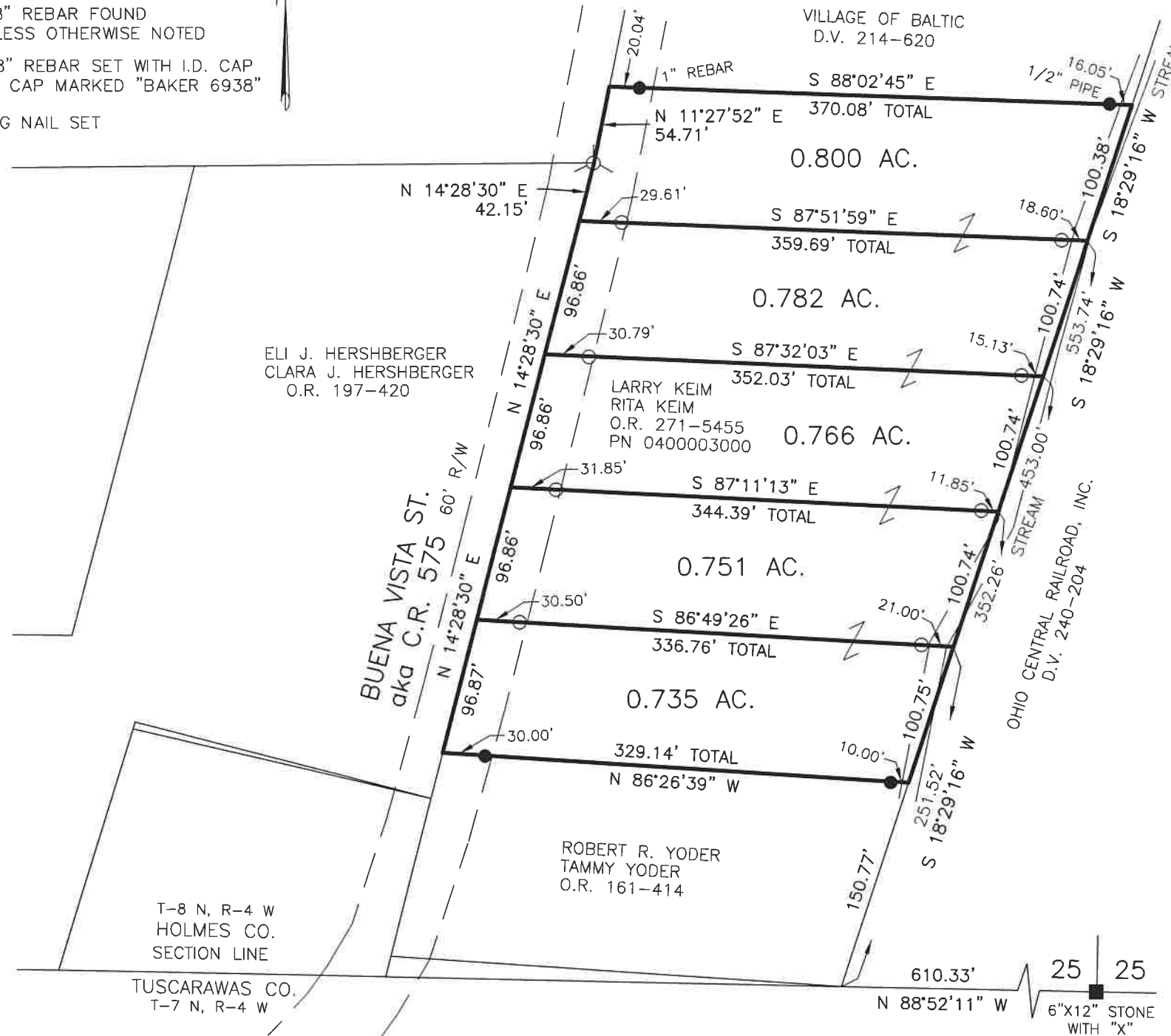
MASTER PLAT

ACTION 1) CONVEY 0.800 ACRES, 0.782 ACRES, 0.766  
 ACRES, 0.751 ACRES, AND 0.735 ACRES FROM  
 LARRY KEIM AND RITA KEIM TO THEMSELVES



I CERTIFY THIS SURVEY TO BE CORRECT  
 TO THE BEST OF MY KNOWLEDGE.

*Donald C. Baker*  
 DONALD C. BAKER P.S. 6938  
 DATE: MARCH 21, 2024  
 KES  
 FILE NAME: WORK5\S-120-24\CNK



202400001426

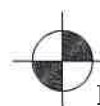
B: 19 P: 5259  
 FILED FOR RECORD IN  
 HOLMES COUNTY, OH  
 ANITA HALL, COUNTY RECORDER  
 04/22/2024 01:34 PM  
 SMALL PLAT . 40.00  
 PAGES: 1

*ORV 288 Pg 4294*

APPROVED BY THE  
 BALTIC PLANNING COMMISSION

*Douglas Plyler*  
 By: Douglas Plyler, Mayor

APPROVED FOR TRANSFER ONLY  
 NO SUBDIVISION PLAT REQUIRED  
 (O.R.C. 711.001 & 711.131)  
 Lot(s) not for building unless  
 approved by Board of Health  
 HOLMES CO. PLANNING COMMISSION  
 By AO Date 4/12/2024



BAKER SURVEYING, LLC  
 138 N. CLAY STREET  
 MILLERSBURG, OHIO 44654  
 PH. 330-674-4788  
 EMAIL: bakersurveying@gmail.com

**Plat Approved**  
 Holmes County Map Office  
 4/12/2024 MM