

PRAIRIE TOWNSHIP
S.W. QTR. SECTION 29
T-14 N; R-13 W
HOLMES COUNTY, OHIO

SURVEYED FOR: JIM CROSKEY



SCALE: 1"=200'

- STONE FOUND
- 5/8" REBAR FOUND UNLESS OTHERWISE NOTED

REFERENCES

- O.R. VOL. 240 PAGE 19
- O.R. VOL. 246 PAGE 1253
- PLAT VOL. 12 PAGE 546
- PLAT VOL. 2 PAGE 529
- PLAT VOL. 12 PAGE 871
- PLAT VOL. 18 PAGE 598
- PLAT VOL. 19 PAGE 2174
- PLAT VOL. 19 PAGE 4999

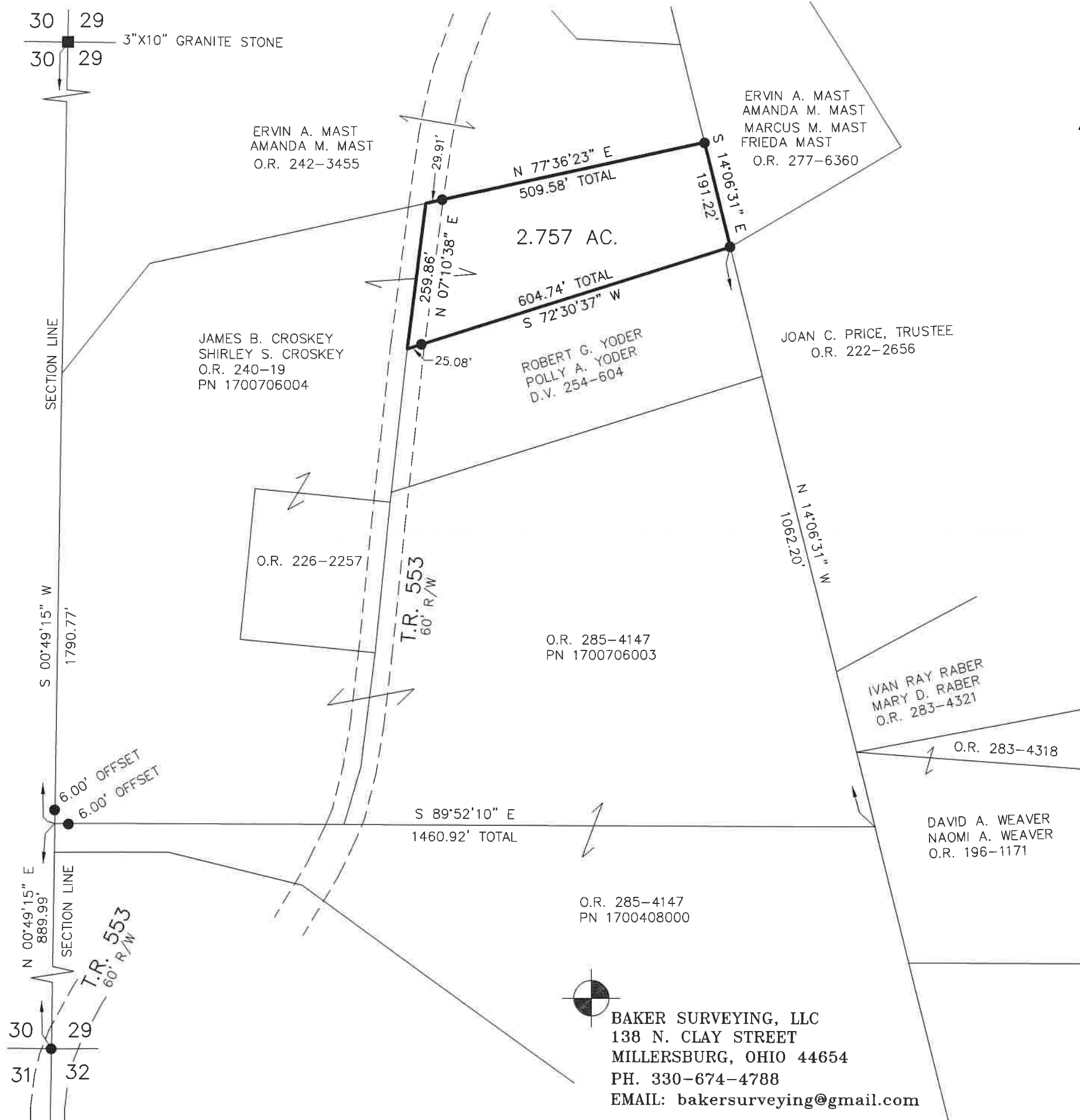
BASIS OF BEARINGS FROM
OHIO STATE PLANE COORDINATE
SYSTEM, NORTH ZONE, N.A.D. 83,
2011 ADJUSTMENT



I CERTIFY THIS SURVEY TO BE CORRECT
TO THE BEST OF MY KNOWLEDGE.

Donald C. Baker

DONALD C. BAKER P.S. 6938
DATE: DEC. 21, 2022
REVISED: AUG. 11, 2023
TAB\VJD
FILE NAME: WORK6\S-661B-22\CNK



BAKER SURVEYING, LLC
138 N. CLAY STREET
MILLERSBURG, OHIO 44654
PH. 330-674-4788
EMAIL: bakersurveying@gmail.com

202400001150
B: 19 P: 5249
FILED FOR RECORD IN
HOLMES COUNTY, OH
ANITA HALL, COUNTY RECORDER
03/29/2024 08:54 AM
SMALL PLAT . 40.00
PAGES: 1

ORV 288 Pg 2868

APPROVED FOR TRANSFER ONLY
NO SUBDIVISION PLAT REQUIRED
(O.R.C. 711.001 & 711.131)
Lot(s) not for building unless
approved by Board of Health
HOLMES CO. PLANNING COMMISSION
By AO Date 3/27/2024



Plat Approved
Holmes County Map Office
3/26/2024 Rg