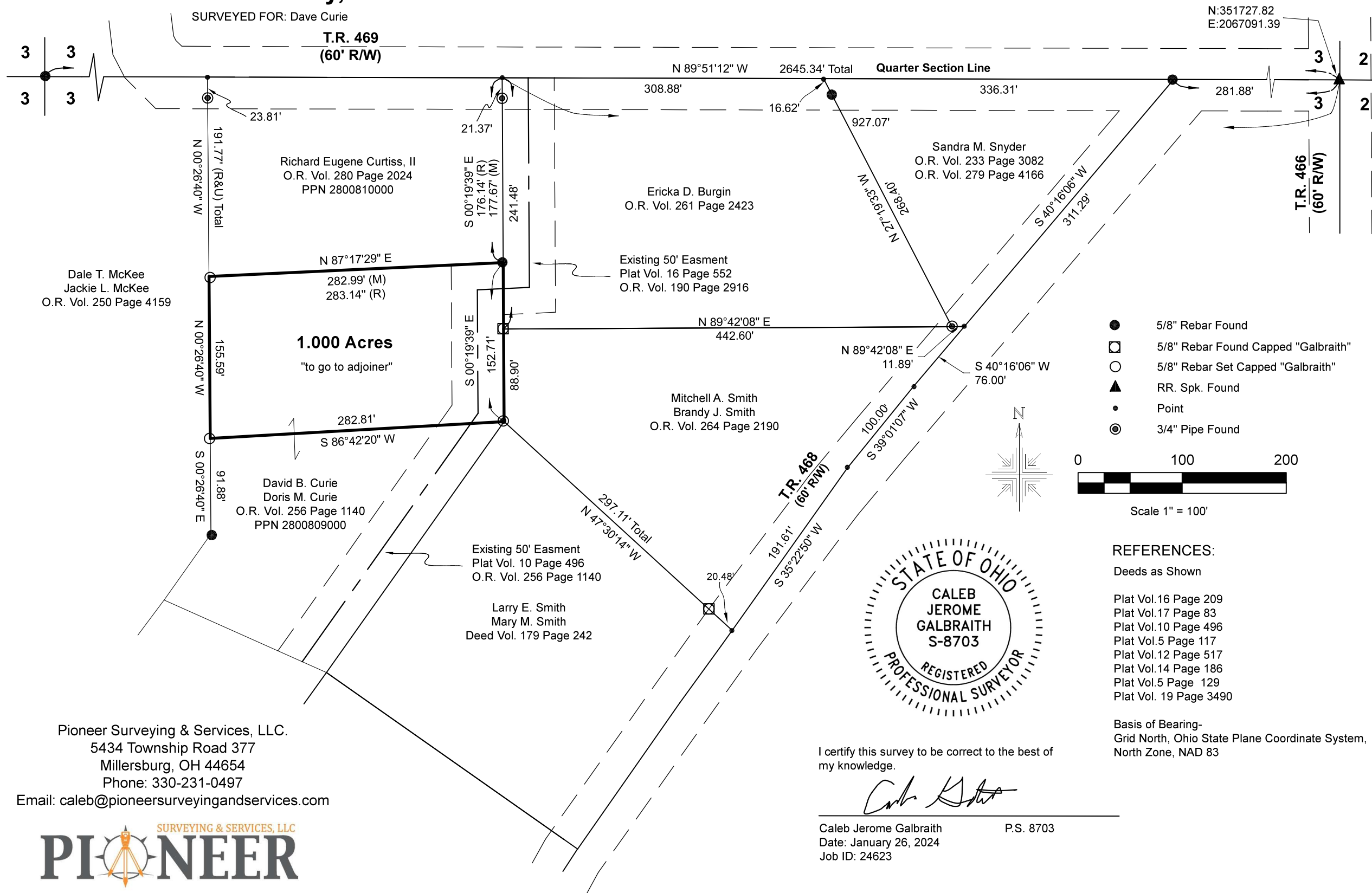


Washington Township
 S.E. Qtr. Section 3
 T-19 N; R-15 W
 Holmes County, Ohio

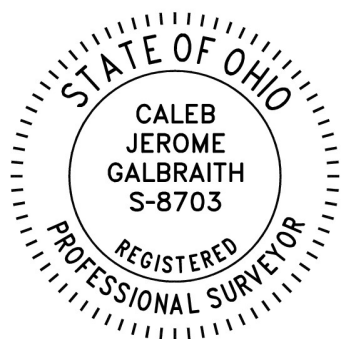
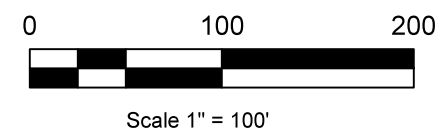
20240000839

B: 19 P: 5233
 FILED FOR RECORD IN
 HOLMES COUNTY, OH
 ANITA HALL, COUNTY RECORDER
 03/05/2024 03:03 PM
 SMALL PLAT . 40.00
 PAGES: 1

ORV 288 Pg 1286



- 5/8" Rebar Found
- ◻ 5/8" Rebar Found Capped "Galbraith"
- 5/8" Rebar Set Capped "Galbraith"
- ▲ RR. Spk. Found
- Point
- ⊙ 3/4" Pipe Found



REFERENCES:

- Deeds as Shown
- Plat Vol.16 Page 209
 - Plat Vol.17 Page 83
 - Plat Vol.10 Page 496
 - Plat Vol.5 Page 117
 - Plat Vol.12 Page 517
 - Plat Vol.14 Page 186
 - Plat Vol.5 Page 129
 - Plat Vol. 19 Page 3490

Basis of Bearing-
 Grid North, Ohio State Plane Coordinate System,
 North Zone, NAD 83

I certify this survey to be correct to the best of my knowledge.

Caleb Galbraith

Caleb Jerome Galbraith P.S. 8703
 Date: January 26, 2024
 Job ID: 24623

APPROVED FOR TRANSFER ONLY
 NO SUBDIVISION PLAT REQUIRED
 (O.R.C. 711.001 & 711.131)
 Lot(s) not for building unless approved by Board of Health
 HOLMES CO. PLANNING COMMISSION
 By AO Date 2/28/2024



Plat Approved
 Holmes County Map Office
2/26/2024 MM

Pioneer Surveying & Services, LLC.
 5434 Township Road 377
 Millersburg, OH 44654
 Phone: 330-231-0497
 Email: caleb@pioneersurveyingandservices.com

