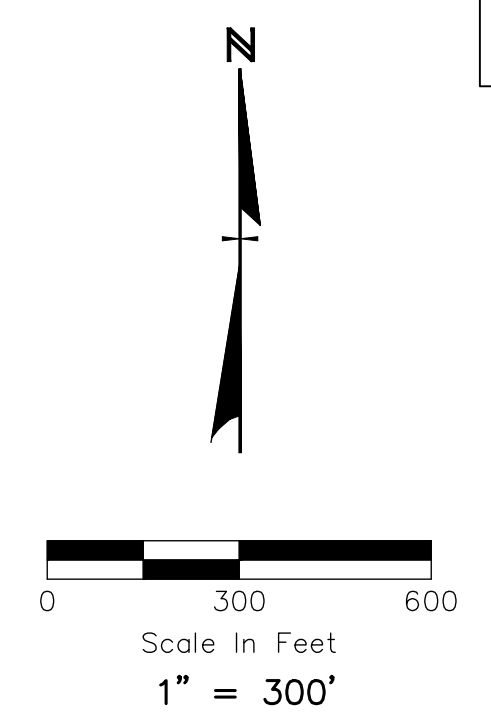


RETRACEMENT SURVEY
RICHLAND TOWNSHIP, COUNTY OF HOLMES, STATE OF OHIO
PART OF THE N.W. QTR. & S.W. QTR. SEC. 16
TOWNSHIP 8, RANGE 8

20240000355
 B: 19 P: 5210
 FILED FOR RECORD IN
 HOLMES COUNTY, OH
 ANITA HALL, COUNTY RECORDER
 01/26/2024 01:30 PM
 PLAT MED . 43.20
 PAGES: 1
O.R. 287 Pg 6460

LEGEND

- IRON PIN OR PIPE FOUND
- STONE FOUND
- Y DRILL HOLE IN STONE FOUND
- Y DRILL HOLE IN STONE W/ 1/2" REBAR SET
- M MEASURED
- R RECORD
- R/W RIGHT-OF-WAY
- PPN PERMANENT PARCEL NUMBER
- E PROPERTY LINE



BASIS OF BEARINGS

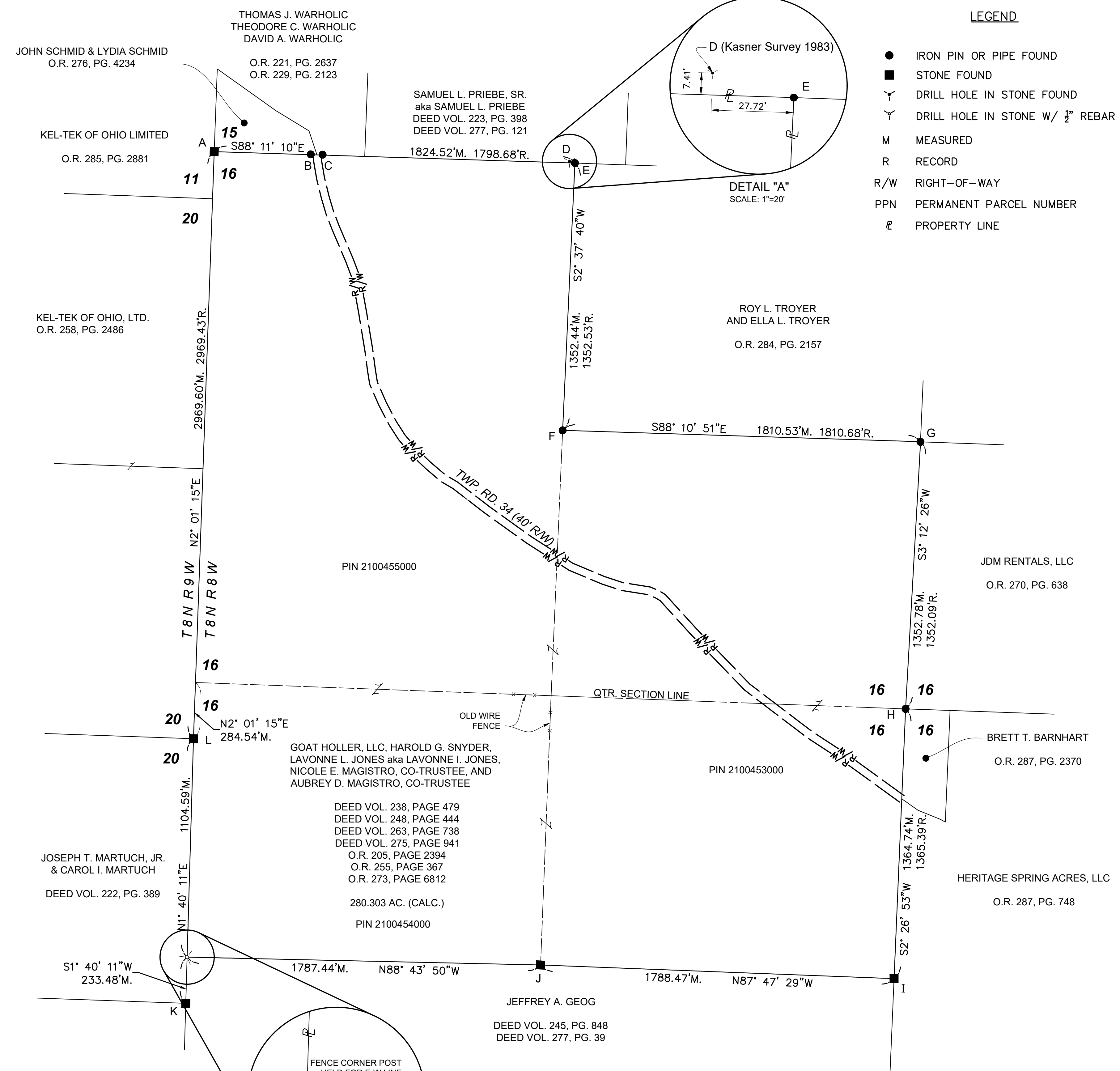
THE BASIS OF BEARINGS IS RELATIVE TO GRID NORTH OF THE OHIO STATE PLANE COORDINATE SYSTEM, NORTH ZONE, NAD 83 (CORS96).

REFERENCES

- PLAT VOL. 2, PAGE 570
- PLAT VOL. 9, PAGE 186
- PLAT VOL. 9, PAGE 192
- PLAT VOL. 9, PAGE 223
- PLAT VOL. 10, PAGE 737
- O.R. VOL. 2, PAGE 388 (11/22/2004)
- PLAT VOL. 19, PAGE 2263
- PLAT VOL. 19, PAGE 4103
- PLAT VOL. 19, PAGE 4989

EXISTING MONUMENTS FOUND

POINT	DESCRIPTION	COMMENTS
A	Stone with "X"	Held for Corner and Range Line
B	5/8" Rebar	S88°23'26"E, 488.58' from Monument "A"
C	5/8" Rebar	S88°23'59"E, 548.18' from Monument "A"
D	Drill Hole In Stone	N73°10'20"W, 28.59' from Monument "E"
E	5/8" Rebar w/Baker cap	Held for Corner
F	5/8" Rebar w/Baker cap	Held for Corner
G	5/8" Rebar w/Baker cap	Held for Corner
H	5/8" Rebar w/Baker cap	Held for Center of Section 16 and Corner
I	Stone with "X"	Held for Corner
J	Stone with "X"	Held for Corner
K	Stone with "X"	Held for Property Line and Range Line
L	Stone with "X"	Held for Property Line and Range Line



I HEREBY CERTIFY THAT I HAVE SURVEYED THE LAND SHOWN ON THIS PLAT, AND THAT THIS PLAT IS A CORRECT REPRESENTATION OF THE LAND SURVEYED IN MARCH, APRIL, MAY, NOVEMBER 2010, MARCH, APRIL, NOVEMBER, DECEMBER 2011, FEBRUARY, MARCH 2012, MARCH, APRIL, MAY 2013, JANUARY 2024 AND THAT I HAVE FOUND OR SET THE PINS AND MONUMENTS SHOWN ON THIS MAP OF SURVEY.

D. Lynn Snyder
 D. LYNN SNYDER P.S. 7287

1/3/2024
 DATE



ENGINEERING ASSOCIATES, INC.
 1935 EAGLE PASS - WOOSTER OHIO 44691
 TELEPHONE: (330) 345-6556
 FAX: (330) 345-8077

APPROVED FOR TRANSFER ONLY
 NO SUBDIVISION PLAT REQUIRED
(O.R.C. 713.003 & 713.131)
Let's not for building unless approved by Board of Health
 HOLMES CO. PLANNING COMMISSION
 By AO Date 1/26/2024

Plat Approved
 Holmes County Map Office
 1/23/2024 Rg

H:\My Documents\Current Files\Jym_Office G Folder\DWG\Snyder_Form Survey\Snyder_Form Map_01-03-24.dwg - SURVEY MAP ~ Jan 03, 2024 - 11:37am