

ORV 287 Pg 519
ORV 287 Pg 521

PRAIRIE TOWNSHIP
S.W. QTR. SECTION 6
N.W. QTR. SECTION 7
T-13 N; R-13 W
HOLMES COUNTY, OHIO

SURVEYED FOR: ALLEN MILLER

MASTER PLAT

ACTION 1) CONVEY 3.277 ACRE TRACT TO GO TO ADJOINER
ACTION 2) CONVEY 77.652 ACRE TRACT

MICHAEL L. YODER
MARTHA L. YODER
O.R. 280-167

MARLENA A. COBLENTZ
O.R. 263-1160

FRANK D. GOODWILL
DIANE GOODWILL
D.V. 226-216
D.V. 234-556
D.V. 264-648

77.652 AC.
SECTION 6- 34.616 AC.
SECTION 7- 43.036 AC.

ALLEN E. MILLER
BETTY ANN MILLER
D.V. 251-422
PN 1700305000

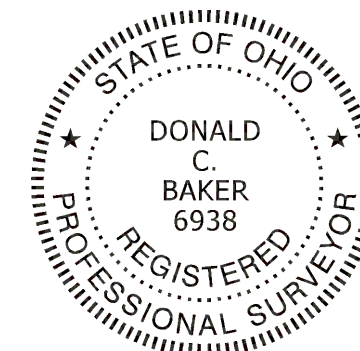
JOHN MARK MILLER
MARILYN J. MILLER
ANDREW J. MILLER
AARON J. MILLER
O.R. 273-5026

STEVEN R. YODER
REGINA W. YODER
O.R. 281-6900

MARCUS D. MILLER
INA MILLER
O.R. 265-2076

STEVEN R. YODER
REGINA W. YODER
O.R. 281-6900

BAKER SURVEYING, LLC
138 N. CLAY STREET
MILLERSBURG, OHIO 44654
PH. 330-674-4788
EMAIL: bakersurveying@gmail.com

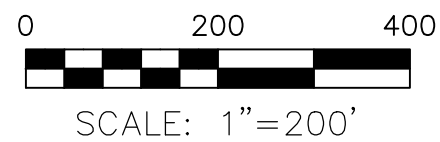


I CERTIFY THIS SURVEY TO BE CORRECT
TO THE BEST OF MY KNOWLEDGE.

Donald C. Baker
DONALD C. BAKER P.S. 6938
DATE: NOV. 15, 2023
KES
FILE NAME: WORK6\S-572-23

APPROVED FOR TRANSFER ONLY
NO SUBDIVISION PLAT REQUIRED
(O.R.C. 711.001 & 711.131)
Lot(s) not for building unless
approved by Board of Health
HOLMES CO. PLANNING COMMISSION
By AO Date 12/22/2023

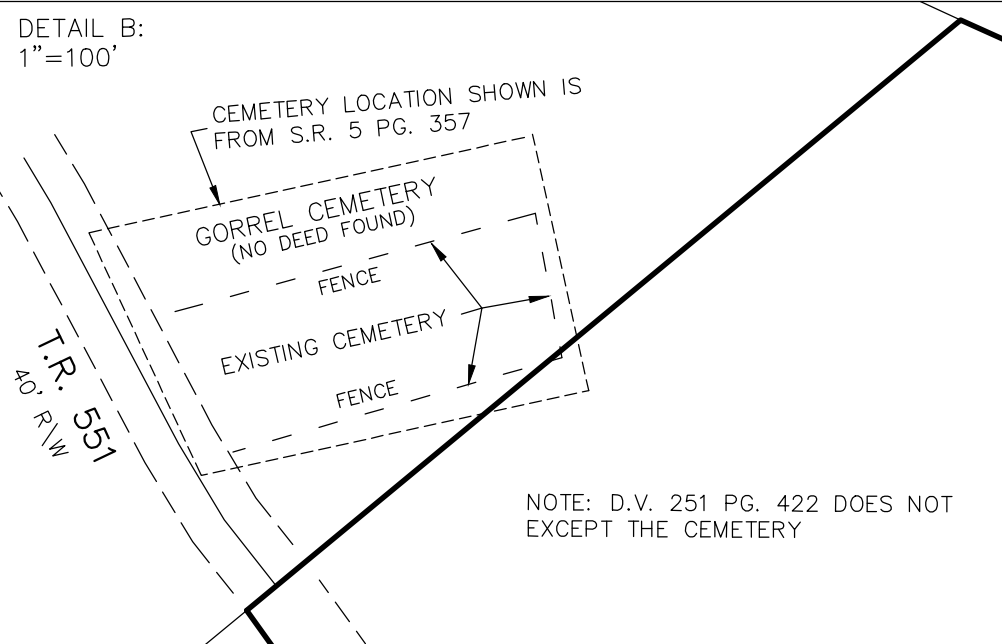
Plat Approved
Holmes County Map Office
12/21/2023 MM



- STONE FOUND
- 5/8" REBAR FOUND UNLESS OTHERWISE NOTED
- 5/8" REBAR SET WITH I.D. CAP I.D. CAP MARKED "BAKER SURVEYING LLC"

BASIS OF BEARINGS FROM
OHIO STATE PLANE COORDINATE
SYSTEM, NORTH ZONE, N.A.D. 83,
2011 ADJUSTMENT

- REFERENCES
- DEED VOL. 251 PAGE 122
 - DEED VOL. 264 PAGE 648
 - PLAT VOL. 11 PAGE 71
 - PLAT VOL. 12 PAGE 902
 - PLAT VOL. 17 PAGE 524
 - PLAT VOL. 19 PAGE 3066
 - PLAT VOL. 19 PAGE 3474
 - PLAT VOL. 19 PAGE 4718
 - PLAT VOL. 19 PAGE 3569



T-17 N, R-14 W
RIPLEY TWP.

T-13 N, R-13 W
PRAIRIE TWP.

T.R. 525
30' R/W

T.R. 555
30' R/W

T.R. 551
40' R/W

T.R. 551
40' R/W

T.R. 551
40' R/W

T.R. 551
40' R/W

T.R. 551
40' R/W

T.R. 551
40' R/W

T.R. 551
40' R/W

T.R. 551
40' R/W

FENCE ALONG LINE
496.69'

N 00°26'14" E
519.58'

N 88°49'45" W
1432.02'

N 26°40'33" W
1400.28' TOTAL
903.59'

N 27°30'25" W
899.07'

N 27°52'37" W
142.06'

N 31°02'54" W
46.26'

N 38°18'43" W
43.74'

S 89°33'56" E
1211.10' TOTAL

S 89°33'56" E
1461.77' TOTAL

S 26°02'32" E
866.13' TOTAL
839.71'

S 26°17'28" E
26.83'

S 22°13'04" E
829.94'

S 65°37'45" E
429.00'

N 30°59'40" W
113.83'

N 65°37'45" W
409.91'

N 88°49'45" W
1612.87'

N 88°49'45" W
1008.52'

S 27°34'55" W
1000.23'

S 63°16'26" W
601.66'

S 32°47'56" E
278.69'

S 76°15'53" W
478.64'

S 00°02'48" W
267.46'

S 00°20'51" E
1742.78'

S 00°17'28" E
230.81'

S 00°20'51" E
932.49'

S 00°20'51" E
1742.78'

S 00°20'51" E
1742.78'

S 00°20'51" E
1742.78'

S 00°20'51" E
1742.78'

S 00°20'51" E
1742.78'

S 00°20'51" E
1742.78'

S 26°02'32" E
866.13' TOTAL
839.71'

S 26°17'28" E
26.83'

S 22°13'04" E
829.94'

S 65°37'45" E
429.00'

N 30°59'40" W
113.83'

N 65°37'45" W
409.91'

S 00°20'51" E
932.49'

S 00°20'51" E
1742.78'

S 00°17'28" E
230.81'

S 00°20'51" E
932.49'

S 00°20'51" E
1742.78'

S 00°20'51" E
1742.78'

S 00°20'51" E
1742.78'

S 00°20'51" E
1742.78'

S 00°20'51" E
1742.78'

S 00°20'51" E
1742.78'

S 00°17'28" E
230.81'

S 00°20'51" E
932.49'

S 00°20'51" E
1742.78'

S 00°20'51" E
1742.78'

S 00°20'51" E
1742.78'

S 00°20'51" E
1742.78'

S 00°20'51" E
1742.78'

S 00°20'51" E
1742.78'