

Walnut Creek Township
N.E. Qtr. Sec. 18
T-9 N; R-5 W
Holmes County, Ohio

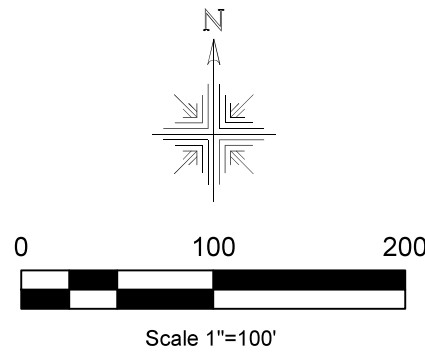
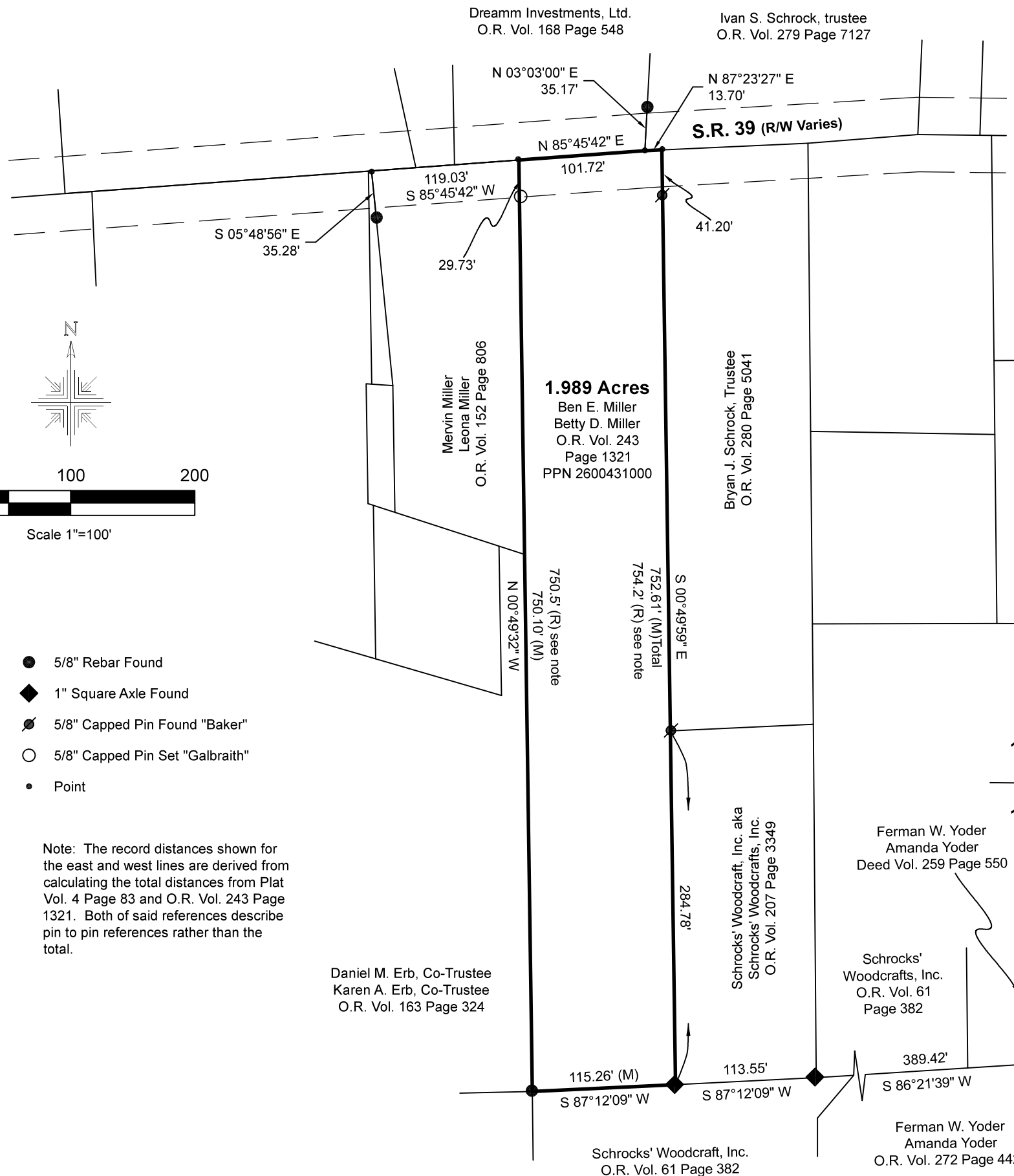
SURVEYED FOR: Ben Miller

REFERENCES:

Deeds as shown

- Plat Vol. 19 Page 1419
- Plat Vol. 04 Page 83
- Plat Vol. 14 Page 711
- Plat Vol. 19 Page 3455
- Plat Vol. 18 Page 644
- Plat Vol. 13 Page 177
- Plat Vol. 12 Page 676

Basis of Bearing Grid North, Ohio State Plane
 Coordinate System, North Zone, NAD 83



- 5/8" Rebar Found
- ◆ 1" Square Axle Found
- ⊙ 5/8" Capped Pin Found "Baker"
- 5/8" Capped Pin Set "Galbraith"
- Point

Note: The record distances shown for the east and west lines are derived from calculating the total distances from Plat Vol. 4 Page 83 and O.R. Vol. 243 Page 1321. Both of said references describe pin to pin references rather than the total.



I certify this survey to be correct to the best of my knowledge.

Caleb Galbraith

Caleb Jerome Galbraith P.S. 8703
 Date: November 21, 2023
 Job ID: 22423

Pioneer Surveying & Services, LLC.
 5434 Township Road 377
 Millersburg, Ohio 44654
 Phone: 330-231-0497

Email: caleb@pioneersurveyingandservices.com



202300004903

B: 19 P: 5161
 FILED FOR RECORD IN
 HOLMES COUNTY, OH
 ANITA HALL, COUNTY RECORDER
 12/08/2023 12:39 PM
 SMALL PLAT . 40.00
 PAGES: 1

ORV 287 Pg 3286

APPROVED FOR TRANSFER ONLY
 NO SUBDIVISION PLAT REQUIRED
 (O.R.C. 711.001 & 711.131)
 Lot(s) not for building unless
 approved by Board of Health
 HOLMES CO. PLANNING COMMISSION
 By AO Date 11/30/2023



Plat Approved

Holmes County Map Office

11/30/2023 MM