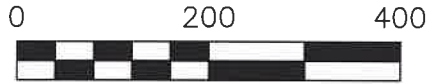


HARDY TOWNSHIP  
N.E. QTR. SECTION 18  
T-9 N; R-7 W  
HOLMES COUNTY, OHIO

SURVEYED FOR: GRACE BIBLE  
FELLOWSHIP OF MILLERSBURG



SCALE: 1"=200'

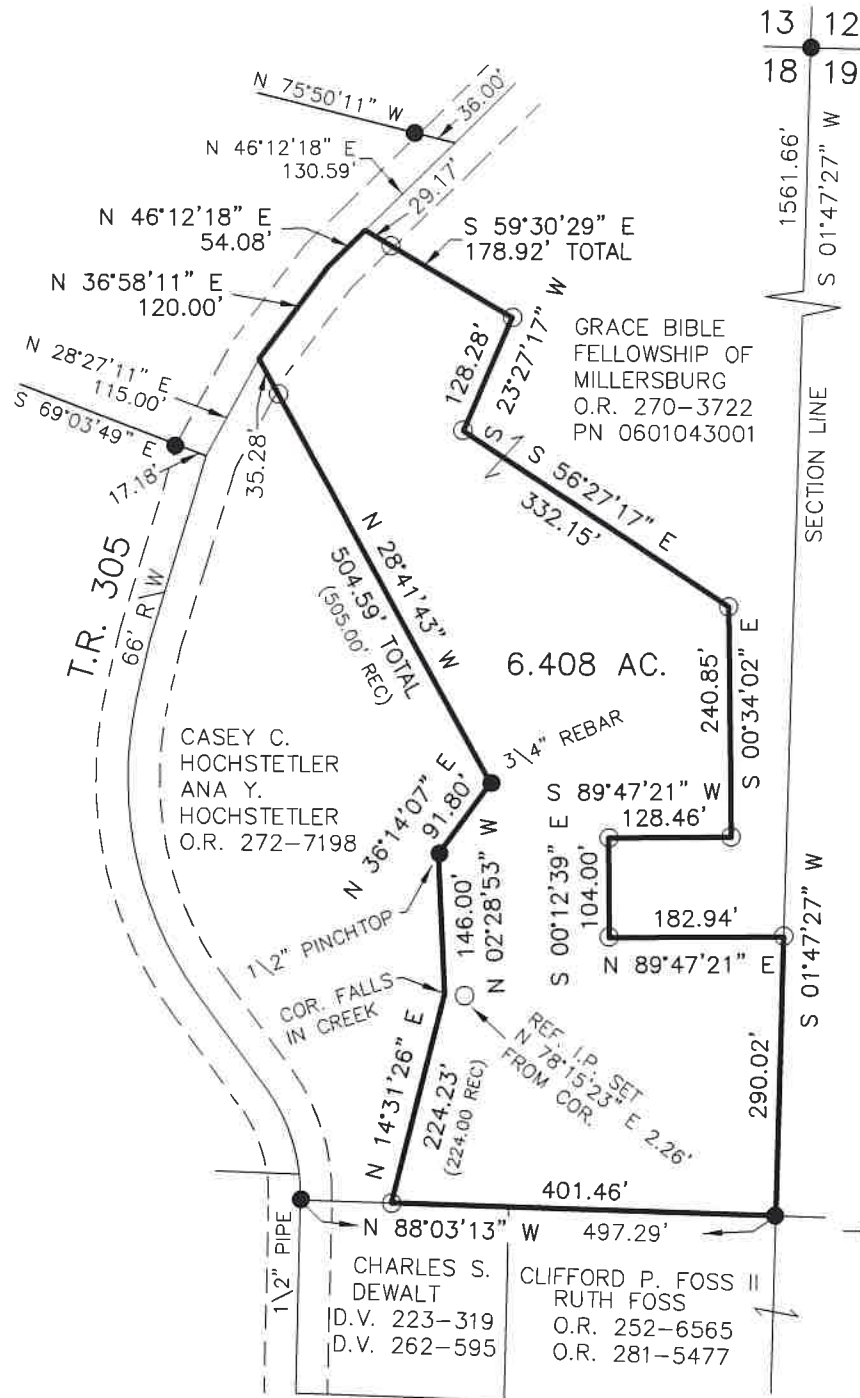
- 5/8" REBAR FOUND  
UNLESS OTHERWISE NOTED
- 5/8" REBAR SET WITH I.D. CAP  
I.D. CAP MARKED "BAKER  
SURVEYING LLC"

BASIS OF BEARINGS FROM  
OHIO STATE PLANE COORDINATE  
SYSTEM, NORTH ZONE, N.A.D. 83,  
2011 ADJUSTMENT



I CERTIFY THIS SURVEY TO BE CORRECT  
TO THE BEST OF MY KNOWLEDGE.

*Donald C. Baker*  
DONALD C. BAKER P.S. 6938  
DATE: AUG. 7, 2023  
TAB\GRB  
FILE NAME: WORK6\S-430-23



REFERENCES

- O.R. VOL. 270 PAGE 3722
- PLAT VOL. 5 PAGE 161
- PLAT VOL. 13 PAGE 67
- PLAT VOL. 15 PAGE 162
- PLAT VOL. 17 PAGE 619
- PLAT VOL. 19 PAGE 837
- PLAT VOL. 19 PAGE 1607
- PLAT VOL. 19 PAGE 4679
- PLAT VOL. 19 PAGE 4922
- PLAT VOL. 19 PAGE 4603

BAKER SURVEYING, LLC  
138 N. CLAY STREET  
MILLERSBURG, OHIO 44654  
PH. 330-674-4788  
EMAIL: bakersurveying@gmail.com

202300003810

B: 19 P: 5107  
FILED FOR RECORD IN  
HOLMES COUNTY, OH  
ANITA HALL, COUNTY RECORDER  
09/20/2023 12:06 PM  
SMALL PLAT . 40.00  
PAGES: 1

*ORV 286 Pg 5840*

APPROVED FOR TRANSFER ONLY  
NO SUBDIVISION PLAT REQUIRED

(O.R.C. 711.001 & 711.131)  
Lot(s) not for building unless  
approved by Board of Health



HOLMES CO. PLANNING COMMISSION

By AO Date 9/7/2023

**Plat Approved**

Holmes County Map Office

8/30/2023 MM