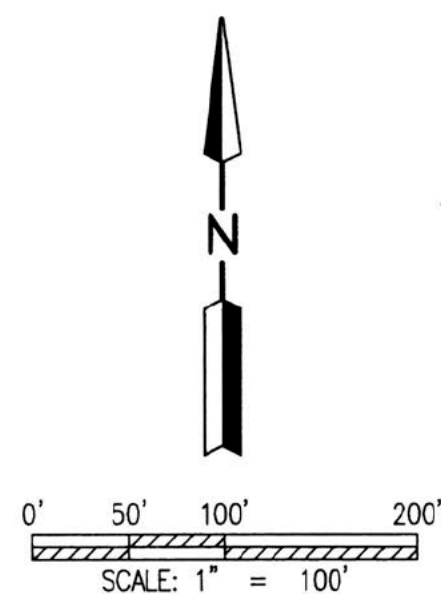


20230003683

B: 19 P: 5098  
 FILED FOR RECORD IN  
 HOLMES COUNTY, OH  
 ANITA HALL, COUNTY RECORDER  
 09/13/2023 11:03 AM  
 SMALL PLAT . 40.00  
 PAGES: 1

*ORV 286 Pg 5194*

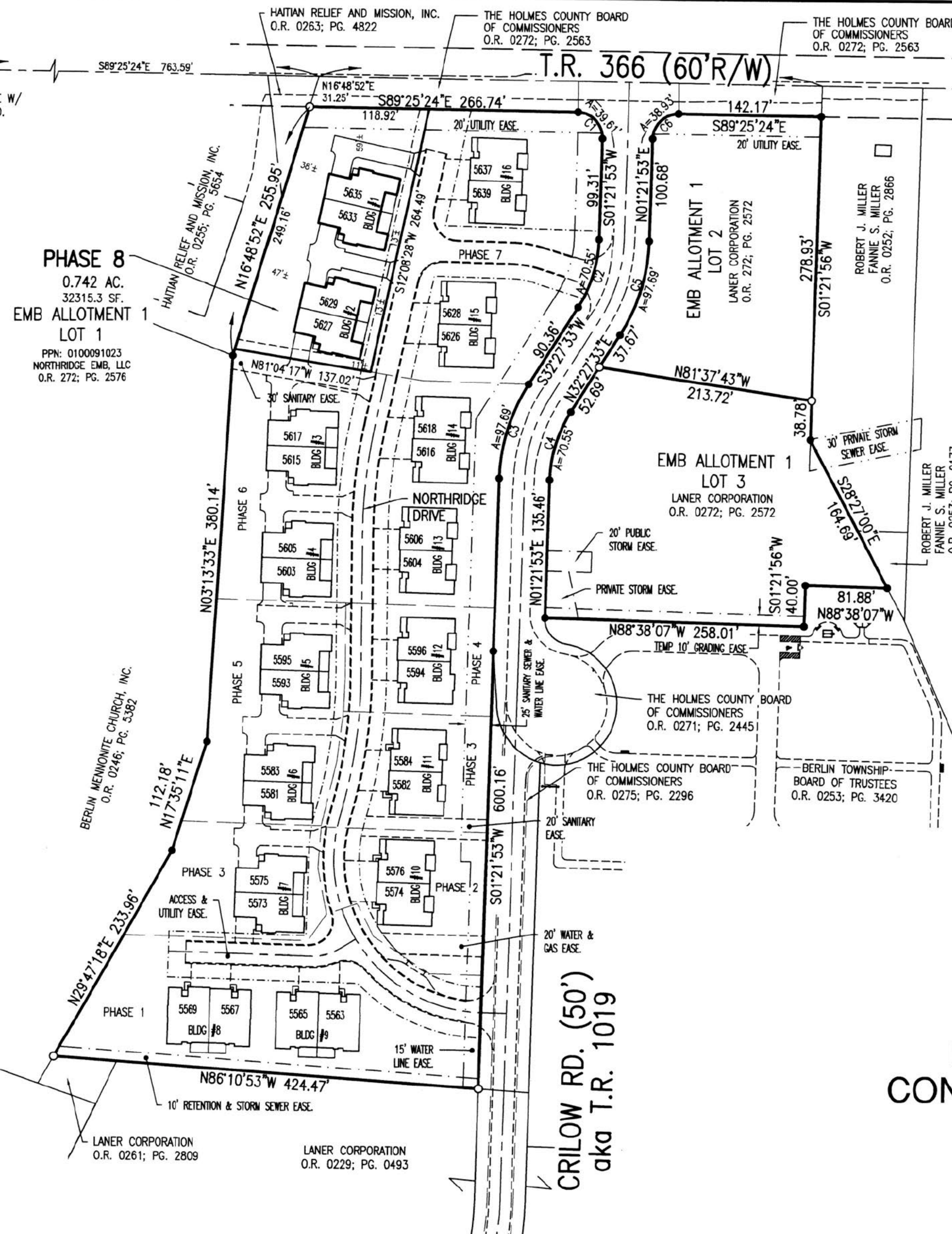
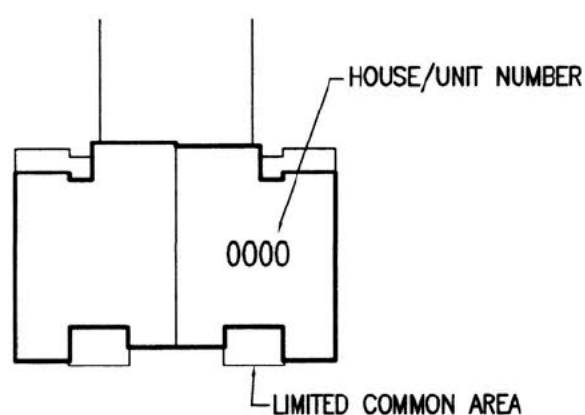


- STONE FOUND
- ✕ SPIKE FOUND
- CAPPED PIN FD. MARKED "BAKER" (UNLESS NOTED)
- CAPPED PIN FD. MARKED "S.J.L. INC." (UNLESS NOTED)

REFERENCE SURVEY:  
 O.R. VOL. 229; PG. 493  
 PLAT VOL. 19; PG. 1925  
 PLAT VOL. 19; PG. 2344  
 PLAT VOL. 19; PG. 4076

BASIS OF BEARING:  
 The bearings as shown  
 hereon are relative to GRID  
 NORTH of the OHIO STATE  
 PLANE COORDINATE SYSTEM,  
 NAD 83 DATUM

- LOT 1**
- PHASE 1 1.170 AC.
  - PHASE 2 0.434 AC.
  - PHASE 3 0.831 AC.
  - PHASE 4 0.359 AC.
  - PHASE 5 0.672 AC.
  - PHASE 6 1.456 AC.
  - PHASE 7 1.129 AC.
  - PHASE 8 0.742 AC.



**NORTHRIDGE EMB  
 CONDOMINIUMS, PHASE 8**  
 PART OF LOT 1  
 EMB ALLOTMENT 1  
 PLAT VOL. 19; PG. 4076  
**BERLIN TOWNSHIP**  
 N.E. QTR. SEC. 15  
 T-9N ; R-5W  
**HOLMES COUNTY, OHIO**

**LEGEND**

UNIT	LIVING	BASEM'T	GARAGE	PORCH	DECK	PATIO	TOTALS
5627	1471 SF.	-----	528 SF.	36 SF.	200 SF.	-----	2235 SF.
5629	1471 SF.	-----	528 SF.	36 SF.	200 SF.	-----	2235 SF.
5633	1471 SF.	-----	528 SF.	36 SF.	200 SF.	-----	2235 SF.
5635	1471 SF.	-----	528 SF.	36 SF.	200 SF.	-----	2235 SF.

**CURVE TABLE**

NO.	ARC	RADIUS	DELTA	BEARING	CHORD
C1	39.61'	25.00'	90°47'09"	S44°01'41"E	35.60'
C2	70.55'	130.00'	31°05'40"	S16°54'43"W	69.69'
C3	97.69'	180.00'	31°05'40"	S16°54'43"W	96.49'
C4	70.55'	130.00'	31°05'40"	N16°54'43"E	69.69'
C5	97.69'	180.00'	31°05'40"	N16°54'43"E	96.49'
C6	38.93'	25.00'	89°12'43"	N45°58'10"E	35.11'

**SHAFFER, JOHNSTON, LICHTENWALTER & ASSOCIATES, INC.**  
 Consulting Engineers & Surveyors  
 3477 Commerce Parkway, Suite C  
 Wooster, Ohio 44691  
 TEL (330) 345-6377 FAX (330) 345-6725 EMAIL sjl@sjl-inc.com

DRAWN: C. Falb CHECKED: \_\_\_\_\_ 1" SCALE = 100' DATE: 08/09/2023  
 DWG NO: EW-2419EA-COND08 JOB NO: EW-2419EA SHEET 2 OF 4