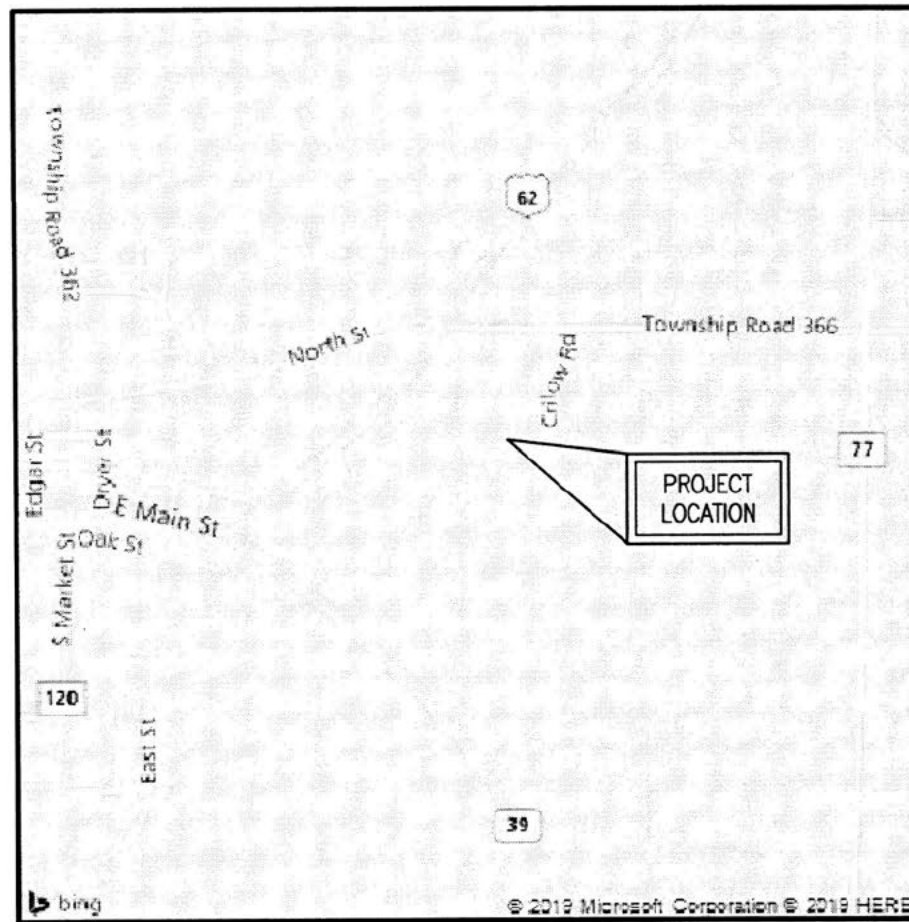


202300003682

B: 19 P: 5097  
FILED FOR RECORD IN  
HOLMES COUNTY, OH  
ANITA HALL, COUNTY RECORDER  
09/13/2023 11:03 AM  
SMALL PLAT . 40.00  
PAGES: 1

*ORV 286 PG 5194*



LOCATION MAP

- STONE FOUND
- ✕ SPIKE FOUND
- CAPPED PIN FD. MARKED "BAKER" (UNLESS NOTED)
- CAPPED PIN FD. MARKED "SJL,INC" (UNLESS NOTED)

REFERENCE SURVEY:  
O.R. VOL. 229; PG. 493  
PLAT VOL. 19; PG. 1925  
PLAT VOL. 19; PG. 2344  
PLAT VOL. 19; PG. 4076

BASIS OF BEARING:  
The bearings as shown  
hereon are relative to GRID  
NORTH of the OHIO STATE  
PLANE COORDINATE SYSTEM,  
NAD 83 DATUM

ENGINEER'S OR ARCHITECT'S DECLARATION: I declare  
that this plan shows graphically, insofar as  
possible, the layout and dimensions of units and  
of the buildings.



*John A. Long*  
John A. Long, P.E. 67239

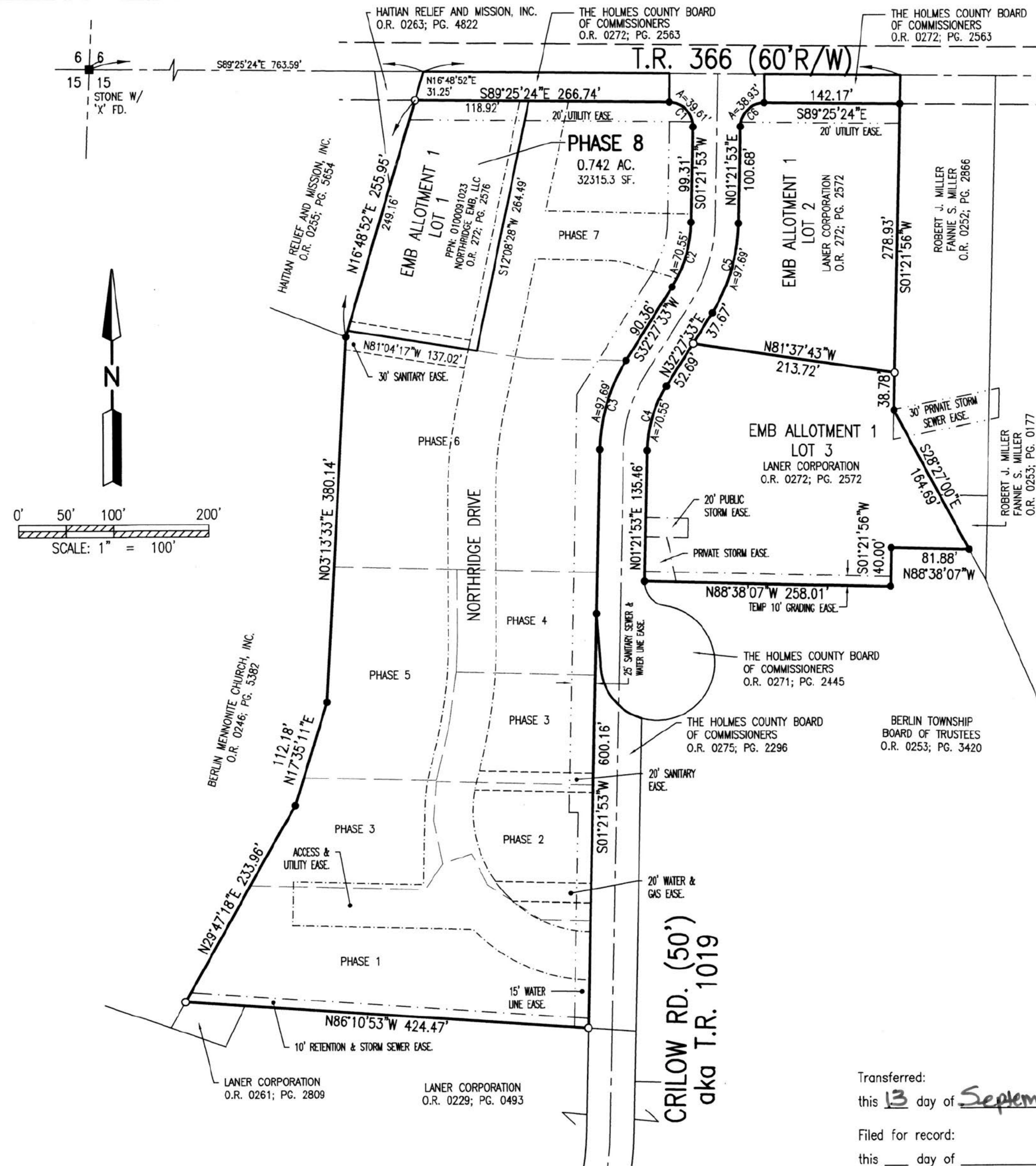
*8/30/23*  
Date

SURVEYOR'S DECLARATION: I declare that this plan  
was prepared from an actual survey. That the  
same shows graphically, insofar as possible, the  
location of the boundaries, the layout, location and  
dimensions of units and of the buildings, the  
location and layout of limited common areas and  
facilities, the location and layout of common areas  
and facilities, and the location of appurtenant  
easements, if any.



*Mark E. Purdy*  
Mark E. Purdy, P.S. 7307

*8-30-23*  
Date



**NORTHRIDGE EMB  
CONDOMINIUMS, PHASE 8**  
PART OF LOT 1  
EMB ALLOTMENT 1  
PLAT VOL. 19; PG. 4076  
**BERLIN TOWNSHIP**  
N.E. QTR. SEC. 15  
T-9N ; R-5W  
**HOLMES COUNTY, OHIO**

CURVE TABLE					
NO.	ARC	RADIUS	DELTA	BEARING	CHORD
C1	39.61'	25.00'	90°47'09"	S44°01'41"E	35.60'
C2	70.55'	130.00'	31°05'40"	S16°54'43"W	69.69'
C3	97.69'	180.00'	31°05'40"	S16°54'43"W	96.49'
C4	70.55'	130.00'	31°05'40"	N16°54'43"E	69.69'
C5	97.69'	180.00'	31°05'40"	N16°54'43"E	96.49'
C6	38.93'	25.00'	89°12'43"	N45°58'10"E	35.11'

Transferred:  
this 13 day of September, 2023 *Jackie McKeegan*  
Holmes County Auditor's Office

Filed for record:  
this \_\_\_ day of \_\_\_\_\_, 20\_\_  
# \_\_\_\_\_ in Volume \_\_\_\_\_, Page \_\_\_\_\_.  
Holmes County Recorder's Office

**SHAFFER, JOHNSTON, LICHTENWALTER  
& ASSOCIATES, INC.**  
Consulting Engineers & Surveyors  
3477 Commerce Parkway, Suite C  
Wooster, Ohio 44691  
TEL (330) 345-6377 FAX (330) 345-6725 EMAIL sjl@sjl-inc.com

DRAWN: C. Folt  
CHECKED: \_\_\_\_\_  
SCALE: 1" = 100'  
DATE: 08/09/2023

DWG NO: EW-2419EA-COND08 JOB NO: EW-2419EA SHEET 1 OF 4