

VILLAGE OF GLENMONT EASEMENT SURVEY
 RICHLAND TOWNSHIP
 S.E. QTR. SECTION 1
 T-8 N; R-9 W
 HOLMES COUNTY, OHIO

202300003426
 B: 19 P: 5077
 FILED FOR RECORD IN
 HOLMES COUNTY, OH
 ANITA HALL, COUNTY RECORDER
 08/25/2023 10:23 AM
 SMALL PLAT . 40.00
 PAGES: 1

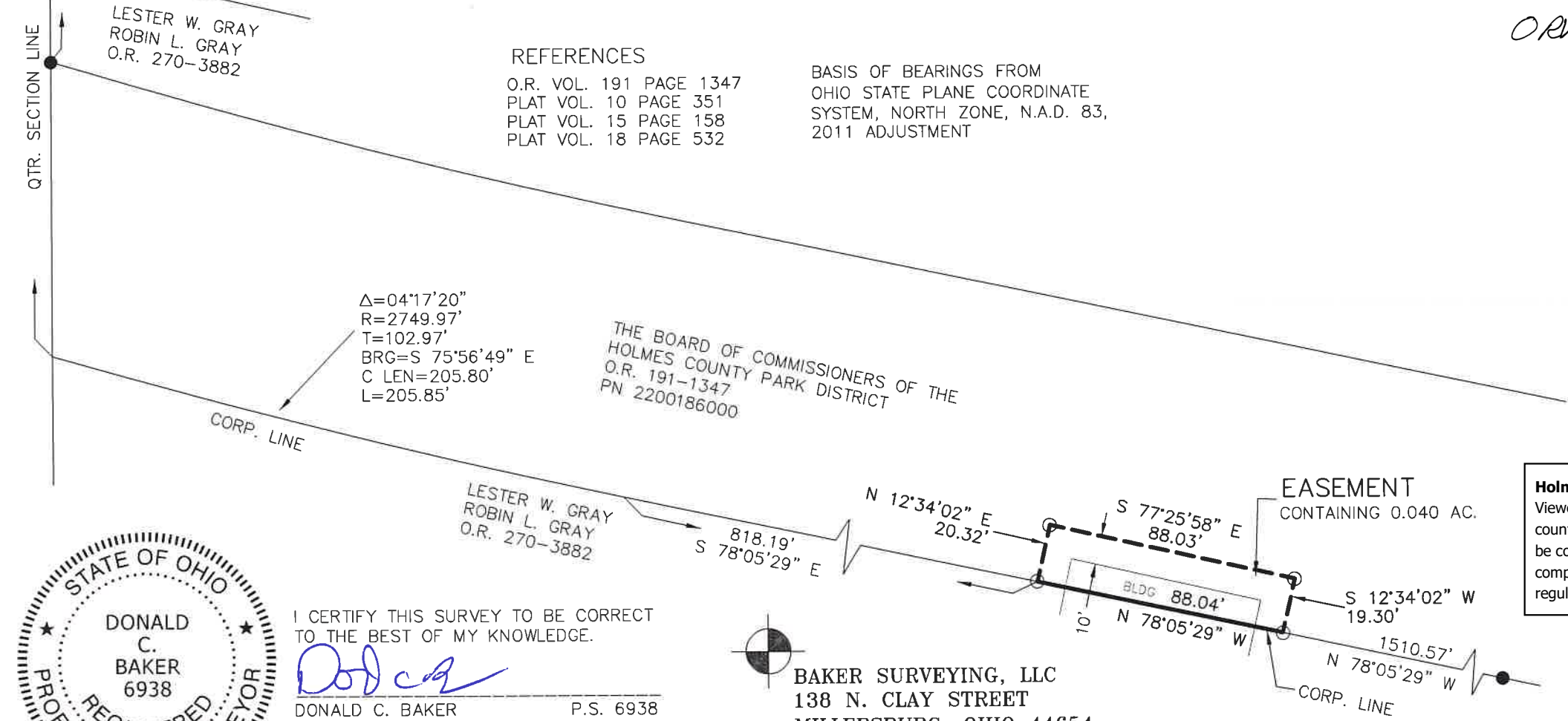
SURVEYED FOR: THE VILLAGE OF GLENMONT

ORV 286 Pg 3889

REFERENCES

O.R. VOL. 191 PAGE 1347
 PLAT VOL. 10 PAGE 351
 PLAT VOL. 15 PAGE 158
 PLAT VOL. 18 PAGE 532

BASIS OF BEARINGS FROM
 OHIO STATE PLANE COORDINATE
 SYSTEM, NORTH ZONE, N.A.D. 83,
 2011 ADJUSTMENT



I CERTIFY THIS SURVEY TO BE CORRECT
 TO THE BEST OF MY KNOWLEDGE.

Donald C. Baker

DONALD C. BAKER P.S. 6938
 DATE: DEC. 28, 2022
 KES
 FILE NAME: WORK6\S-654-22B\CNK

BAKER SURVEYING, LLC
 138 N. CLAY STREET
 MILLERSBURG, OHIO 44654
 PH. 330-674-4788
 EMAIL: bakersurveying@gmail.com

Holmes County Planning Commission
 Viewed only for the internal use of
 county departments. Stamp shall not
 be considered an endorsement of
 compliance with county subdivision
 regulations.

Plat Approved
 Holmes County Map Office
 8/16/2023 MM