

Village of Millersburg
N.E. Qtr. Sec. 22
T-9 N; R-7 W

Hardy Township
N.E. Qtr. Sec. 22
S.E. Qtr. Sec. 22
S.W. Qtr. Sec. 21
T-9 N; R-7 W

Mechanic Township
N.E. Qtr. Sec. 2
N.W. Qtr. Sec. 1
T-8 N; R-7 W
Holmes County, Ohio

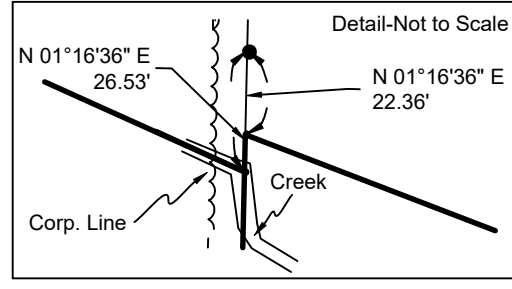
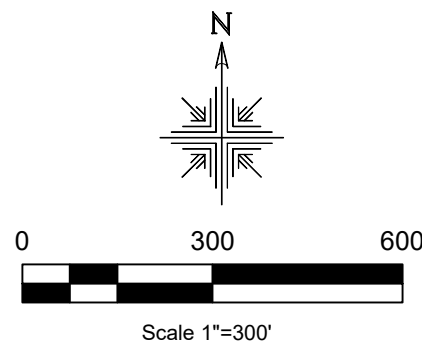
REFERENCES:

- Deeds as shown
- Plat Vol. 19 Page 2723
- Plat Vol. 2 Page 193
- Plat Vol. 2 Page 434
- Plat Vol. 14 Page 115
- Plat Vol. 16 Page 331
- Plat Vol. 15 Page 133
- Plat Vol. 2 Page 336
- Plat Vol. 17 Page 851
- Plat Vol. 19 Page 2157
- Plat Vol. 19 Page 3797
- Plat Vol. 19 Page 772
- Plat Vol. 18 Page 295
- Plat Vol. 19 Page 2867
- Plat Vol. 16 Page 295
- Plat Vol. 19 Page 407
- Plat Vol. 2 Page 336
- Plat Vol. 18 Page 266
- Plat Vol. 19 Page 4075
- Plat Vol. 16 Page 639
- Plat Vol. 9 Page 95
- Plat Vol. 2 Page 613
- Plat Vol. 9 Page 46
- Plat Vol. 2 Page 336
- Plat Vol. 14 Page 483
- Plat Vol. 2 Page 336
- Plat Vol. 19 Page 3506
- Plat Vol. 16 Page 900
- Plat Vol. 18 Page 384

Basis of Bearing: Grid North, Ohio State Plane
Coordinate System Ohio North Zone, NAD 83.

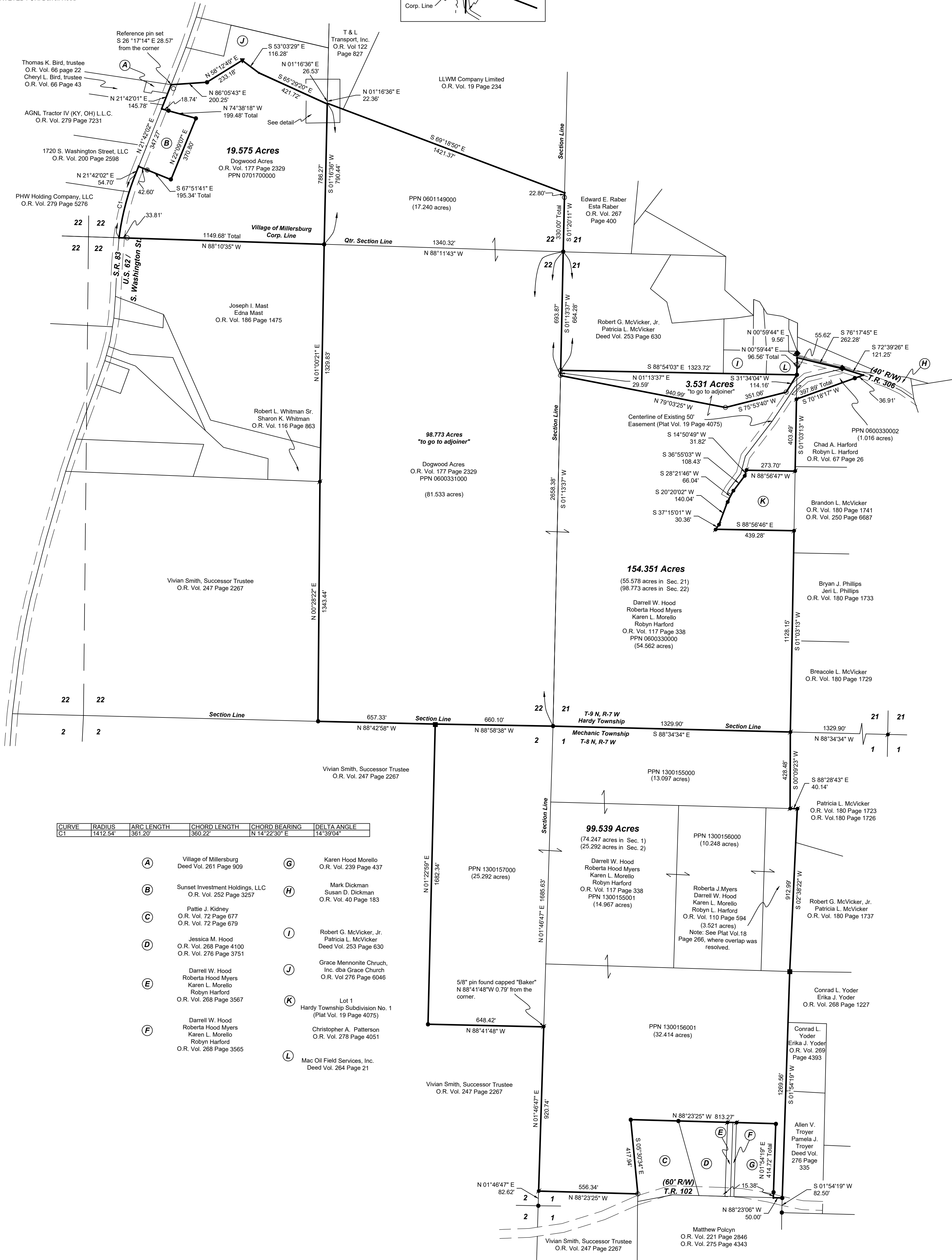
MASTER PLAT: The Purpose of this survey.

- Action 1.) Convey 3.531 acres to go to adjoiner.
- Action 2.) Convey 98.773 acres to go to adjoiner.
- Action 3.) Convey 154.351 Acres.
- Action 4.) Convey 19.575 Acres.
- Action 5.) Convey 99.539 Acres.



202300003284
B: 19 P: 5067
FILED FOR RECORD IN
HOLMES COUNTY, OH
ANITA HALL, COUNTY RECORDER
8/15/2023 02:36 PM
PLAT MED . 43.20
PAGES: 1

O/R 286 Pg 3188
O/R 286 Pg 3193
O/R 286 Pg 3197
O/R 286 Pg 3204
O/R 286 Pg 3209



CURVE	RADIUS	ARC LENGTH	CHORD LENGTH	CHORD BEARING	DELTA ANGLE
C1	1412.54'	361.20'	360.22'	N 14°39'04"	

- (A) Village of Millersburg Deed Vol. 261 Page 909
- (B) Sunset Investment Holdings, LLC O.R. Vol. 252 Page 3257
- (C) Pattie J. Kidney O.R. Vol. 72 Page 677 O.R. Vol. 72 Page 679
- (D) Jessica M. Hood O.R. Vol. 268 Page 4100 O.R. Vol. 276 Page 3751
- (E) Darrell W. Hood Roberta Hood Myers Karen L. Morello Robyn Harford O.R. Vol. 268 Page 3567
- (F) Darrell W. Hood Roberta Hood Myers Karen L. Morello Robyn Harford O.R. Vol. 268 Page 3565
- (G) Karen Hood Morello Deed Vol. 239 Page 437
- (H) Mark Dickman Susan D. Dickman O.R. Vol. 40 Page 163
- (I) Robert G. McVicker, Jr. Patricia L. McVicker Deed Vol. 253 Page 630
- (J) Grace Mennonite Church, Inc. dba Grace Church O.R. Vol. 276 Page 6046
- (K) Lot 1 Hardy Township Subdivision No. 1 (Plat Vol. 19 Page 4075) Christopher A. Patterson O.R. Vol. 278 Page 4051
- (L) Mac Oil Field Services, Inc. Deed Vol. 264 Page 21

I certify this survey to be correct to the best of my knowledge.
Caleb Jerome Galbraith
Caleb Jerome Galbraith P.S. 8703
Date: March 23, 2023
Job ID: 323



Pioneer Surveying & Services, LLC.
5434 Township Road 377
Millersburg, Ohio 44654
Phone: 330-231-0497
Email: caleb@pioneersurveyingandservices.com

APPROVED FOR TRANSFER ONLY
NO SUBDIVISION PLAT REQUIRED
(O.R.C. 711.001 & 711.133)
Lot(s) not for building unless
approved by Board of Health
HOLMES CO. PLANNING COMMISSION
by AO Date 6/7/2023

Plat Approved
Holmes County Map Office
6/7/2023 MM