

PAINT TOWNSHIP
N.E. & S.E. QTRS. SECTION 31
T-15 N; R-11 W
HOLMES COUNTY, OHIO

SURVEYED FOR: JERRY SCHLABACH

0 200 400

SCALE: 1"=200'

- ▲ R.R. SPIKE FOUND
- 5/8" REBAR FOUND UNLESS OTHERWISE NOTED
- ⊗ DRILL HOLE SET
- MAG NAIL SET
- 5/8" REBAR SET WITH I.D. CAP I.D. CAP MARKED "BAKER SURVEYING LLC"

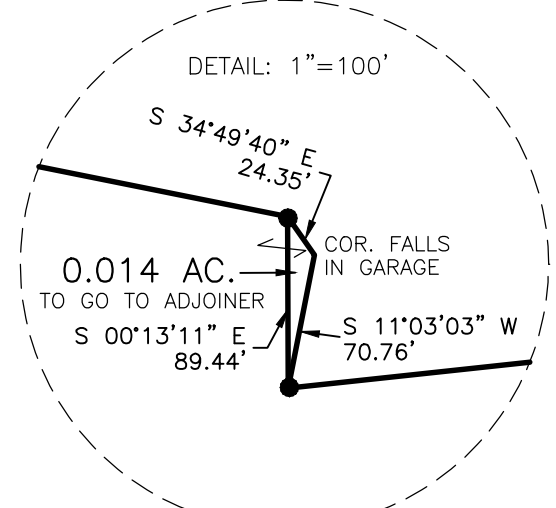
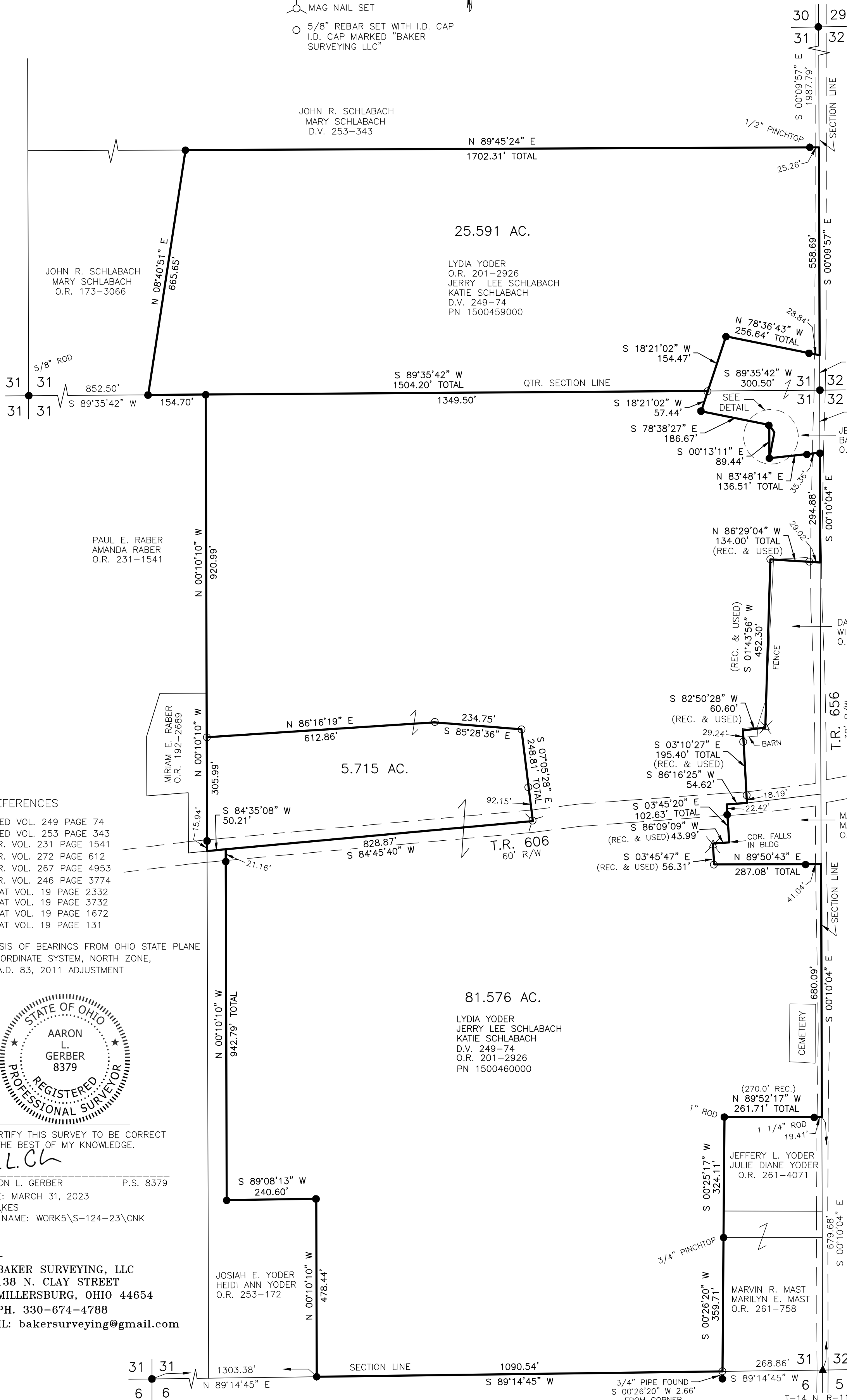
MASTER PLAT

- ACTION 1) CONVEY 0.014 ACRES TO ADJOINER
- ACTION 2) CONVEY 5.715 ACRES
- ACTION 3) CONVEY 25.591 ACRES AND 81.576 ACRES

202300003142

B: 19 P: 5056
FILED FOR RECORD IN
HOLMES COUNTY, OH
ANITA HALL, COUNTY RECORDER
08/07/2023 03:37 PM
SMALL PLAT . 40.00
PAGES: 1

ORV 286 Pg 2519
ORV 286 Pg 2522
ORV 286 Pg 2525



REFERENCES

- DEED VOL. 249 PAGE 74
- DEED VOL. 253 PAGE 343
- O.R. VOL. 231 PAGE 1541
- O.R. VOL. 272 PAGE 612
- O.R. VOL. 267 PAGE 4953
- O.R. VOL. 246 PAGE 3774
- PLAT VOL. 19 PAGE 2332
- PLAT VOL. 19 PAGE 3732
- PLAT VOL. 19 PAGE 1672
- PLAT VOL. 19 PAGE 131

BASIS OF BEARINGS FROM OHIO STATE PLANE COORDINATE SYSTEM, NORTH ZONE, N.A.D. 83, 2011 ADJUSTMENT



I CERTIFY THIS SURVEY TO BE CORRECT TO THE BEST OF MY KNOWLEDGE.

A-L-G
AARON L. GERBER P.S. 8379
DATE: MARCH 31, 2023
ALG\KES
FILE NAME: WORK5\S-124-23\CNK

BAKER SURVEYING, LLC
138 N. CLAY STREET
MILLERSBURG, OHIO 44654
PH. 330-674-4788
EMAIL: bakersurveying@gmail.com

APPROVED FOR TRANSFER ONLY
NO SUBDIVISION PLAT REQUIRED
(O.R.C. 711.001 & 711.131)
Lot(s) not for building unless approved by Board of Health
HCP
HOLMES CO. PLANNING COMMISSION
By AO Date 6/20/2023

Plat Approved
Holmes County Map Office
6/12/2023 MM

T-14 N, R-11 W