

**Salt Creek Township
S.E. Qtr. Sec.35
T-15 N; R-12 W
Holmes County, Ohio**

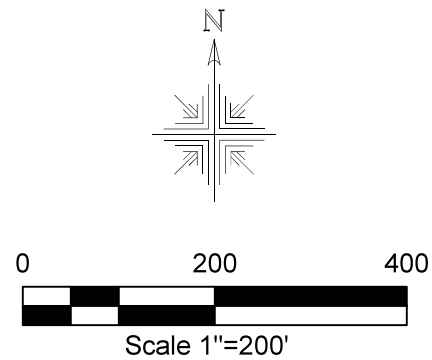
SURVEYED FOR: Raymond Miller

REFERENCES:

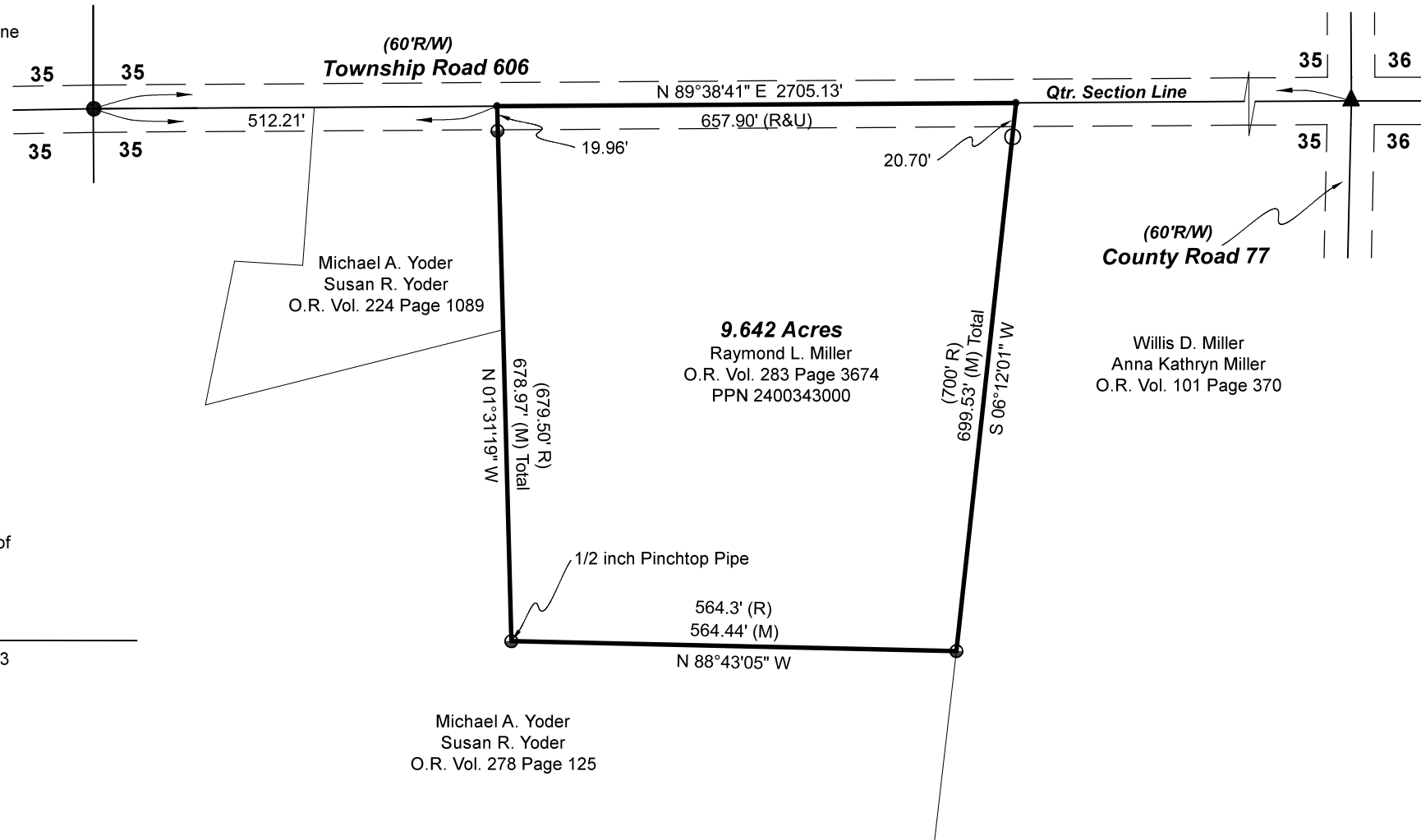
Deeds as shown

- Plat Vol. 19 Page 4342
- Plat Vol. 12 Page 783
- Plat Vol. 10 Page 879
- Plat Vol. 19 Page 2207
- Plat Vol. 19 Page 1308
- Plat Vol. 19 Page 1462
- Plat Vol. 19 Page 4898
- Plat Vol. 19 Page 1802

Basis of Bearing Grid North, Ohio State Plane
Coordinate System, North Zone, NAD 83



- 5/8" Rebar Found unless noted
- 3/4" Pinched top Pipe Found unless noted
- 5/8" Capped Pin Set "Galbraith"
- ▲ Railroad Spike Found
- Point



I certify this survey to be correct to the best of my knowledge.

Caleb Jerome Galbraith P.S. 8703
Date: April 13, 2023
Job ID:7623-SC29

Pioneer Surveying & Services, LLC.
5434 Township Road 377
Millersburg, Ohio 44654
Phone: 330-231-0497

Email: caleb@pioneersurveyingandservices.com



202300002821
B: 19 P: 5038
FILED FOR RECORD IN
HOLMES COUNTY, OH
ANITA HALL, COUNTY RECORDER
07/14/2023 02:57 PM
SMALL PLAT . 40.00
PAGES: 1

ORV 286 Pg 942

APPROVED FOR TRANSFER ONLY
NO SUBDIVISION PLAT REQUIRED
(O.R.C. 711.001 & 711.131)
Lot(s) not for building unless
approved by Board of Health
HOLMES CO. PLANNING COMMISSION
By TS Date 6/30/2023



Plat Approved
Holmes County Map Office
6/28/2023 MM