

BERLIN TOWNSHIP  
N.E. QTR. SECTION 5  
T-9 N; R-5 W  
HOLMES COUNTY, OHIO

SURVEYED FOR: CHRIST YODER



SCALE: 1"=200'

● 5/8" REBAR FOUND  
UNLESS OTHERWISE NOTED

REFERENCES

- O.R. VOL. 47 PAGE 898
- O.R. VOL. 205 PAGE 2294
- O.R. VOL. 206 PAGE 4985
- O.R. VOL. 282 PAGE 6722
- O.R. VOL. 282 PAGE 5034
- PLAT VOL. 19 PAGE 1338
- PLAT VOL. 19 PAGE 4786
- PLAT VOL. 19 PAGE 2663

BASIS OF BEARINGS FROM  
OHIO STATE PLANE COORDINATE  
SYSTEM, NORTH ZONE, N.A.D. 83,  
2011 ADJUSTMENT

ERVIN U. YODER  
EDNA MAE YODER  
O.R. 47-898



I CERTIFY THIS SURVEY TO BE CORRECT  
TO THE BEST OF MY KNOWLEDGE.

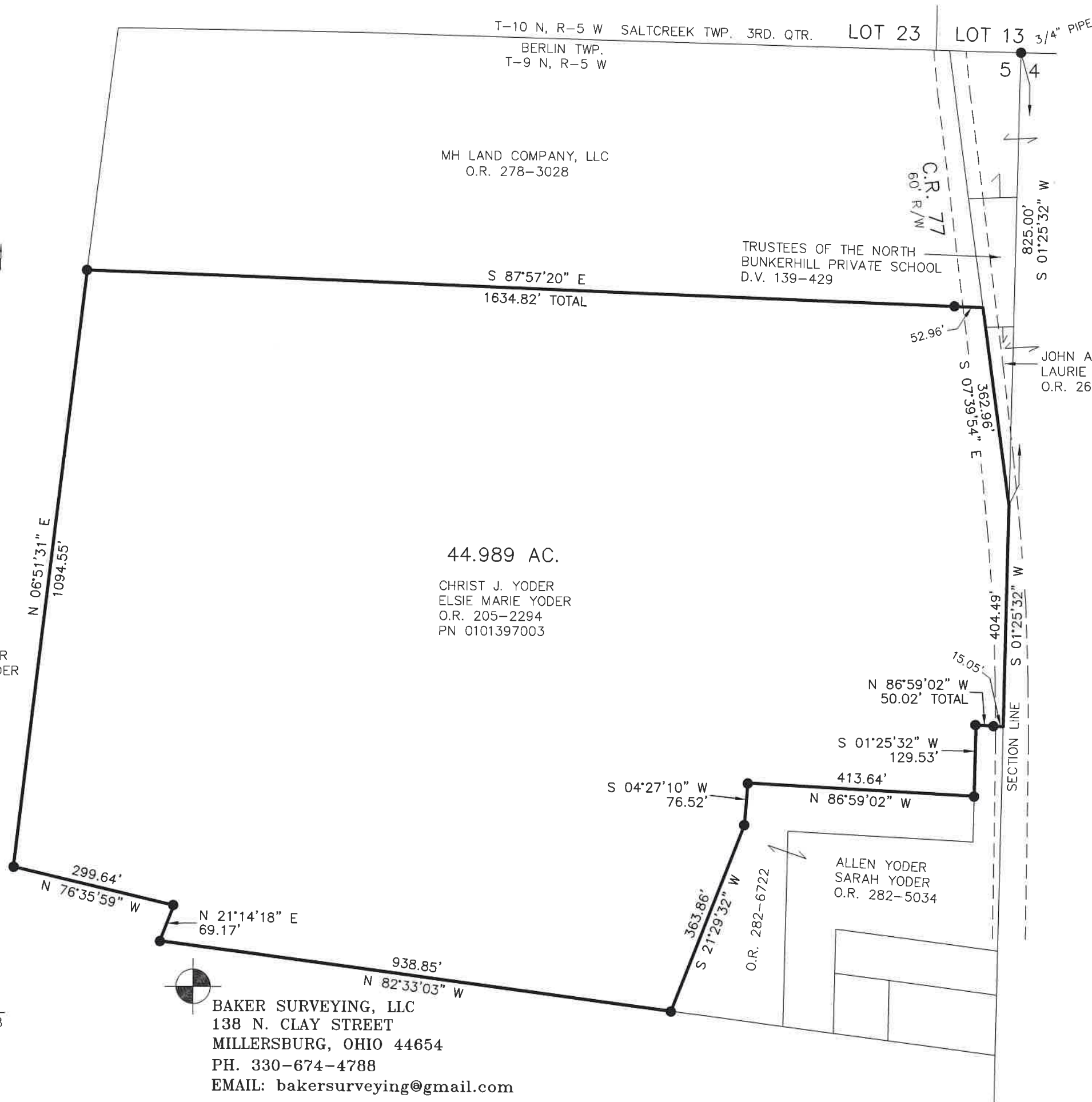
*Donald C. Baker*

DONALD C. BAKER P.S. 6938

DATE: MARCH 10, 2023

KES

FILE NAME: WORK6\S-87-23\CNK



202300002370

B: 19 P: 5018  
FILED FOR RECORD IN  
HOLMES COUNTY, OH  
ANITA HALL, COUNTY RECORDER  
06/14/2023 10:54 AM  
SMALL PLAT . 40.00  
PAGES: 1

*ORV 285 Pg 6084*

APPROVED FOR TRANSFER ONLY  
NO SUBDIVISION PLAT REQUIRED

(O.R.C. 711.001 & 711.131)

Lot(s) not for building unless  
approved by Board of Health



HOLMES CO. PLANNING COMMISSION

By TS Date 4/4/2023

**Plat Approved**

Holmes County Map Office

4/3/2023 MM