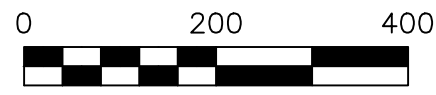


SALT CREEK TOWNSHIP  
 S.E. QTR. SECTION 6  
 T-14 N; R-12 W  
 HOLMES COUNTY, OHIO

SURVEYED FOR: LEVI SHETLER



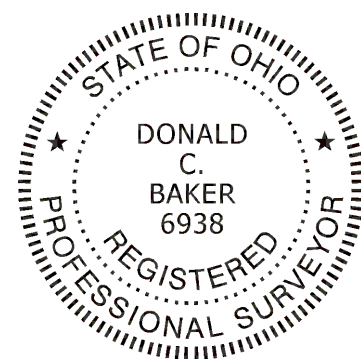
SCALE: 1"=200'

- STONE FOUND
- 5/8" REBAR FOUND UNLESS OTHERWISE NOTED
- 5/8" REBAR SET WITH I.D. CAP I.D. CAP MARKED "BAKER 6938"

BASIS OF BEARINGS FROM OHIO STATE PLANE COORDINATE SYSTEM, NORTH ZONE, N.A.D. 83, 2011 ADJUSTMENT

REFERENCES

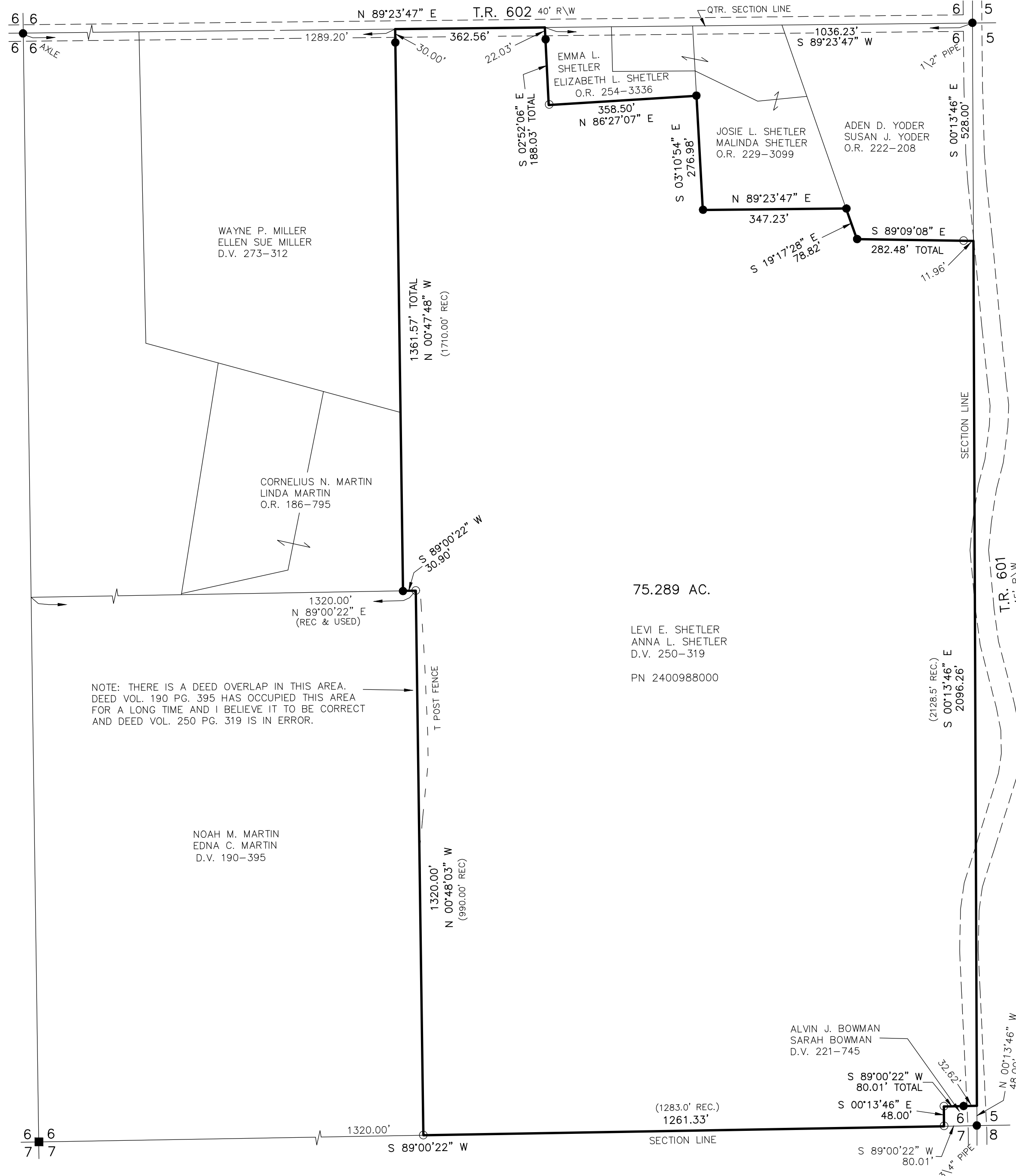
- DEED VOL. 250 PAGE 319
- PLAT VOL. 2 PAGE 380
- PLAT VOL. 10 PAGE 195
- PLAT VOL. 16 PAGE 22
- PLAT VOL. 16 PAGE 90
- PLAT VOL. 19 PAGE 3289
- PLAT VOL. 19 PAGE 1749



I CERTIFY THIS SURVEY TO BE CORRECT TO THE BEST OF MY KNOWLEDGE.

*Donald C. Baker*  
 DONALD C. BAKER P.S. 6938  
 DATE: MARCH 29, 2023  
 TAB\VJD  
 FILE NAME: WORK6\S-135-23

BAKER SURVEYING, LLC  
 138 N. CLAY STREET  
 MILLERSBURG, OHIO 44654  
 PH. 330-674-4788  
 EMAIL: bakersurveying@gmail.com



202300001958  
 B: 19 P: 5003  
 FILED FOR RECORD IN  
 HOLMES COUNTY, OH  
 ANITA HALL, COUNTY RECORDER  
 05/17/2023 08:54 AM  
 SMALL PLAT . 40.00  
 PAGES: 1

*ORA 285 Pg 395B*

APPROVED FOR TRANSFER ONLY  
 NO SUBDIVISION PLAT REQUIRED  
 (O.R.C. 711.001 & 711.131)  
 Lot(s) not for building unless approved by Board of Health  
 HOLMES CO. PLANNING COMMISSION  
 By TS Date 4/14/2023



**Plat Approved**  
 Holmes County Map Office  
 4/13/2023 MM