

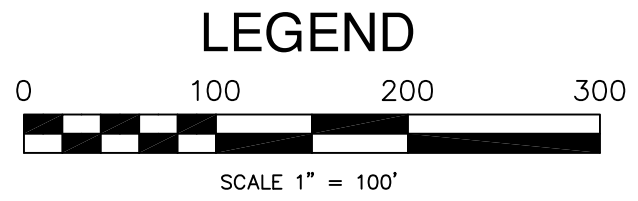
PRAIRIE TOWNSHIP
 N.W. QTR FRACTIONAL SECTION 14
 T-13 N; R-13 W
 HOLMES COUNTY, OHIO

202300001655
 B: 19 P: 4980
 FILED FOR RECORD IN
 HOLMES COUNTY, OH
 ANITA HALL, COUNTY RECORDER
 04/24/2023 03:24 PM
 SMALL PLAT . 40.00
 PAGES: 1

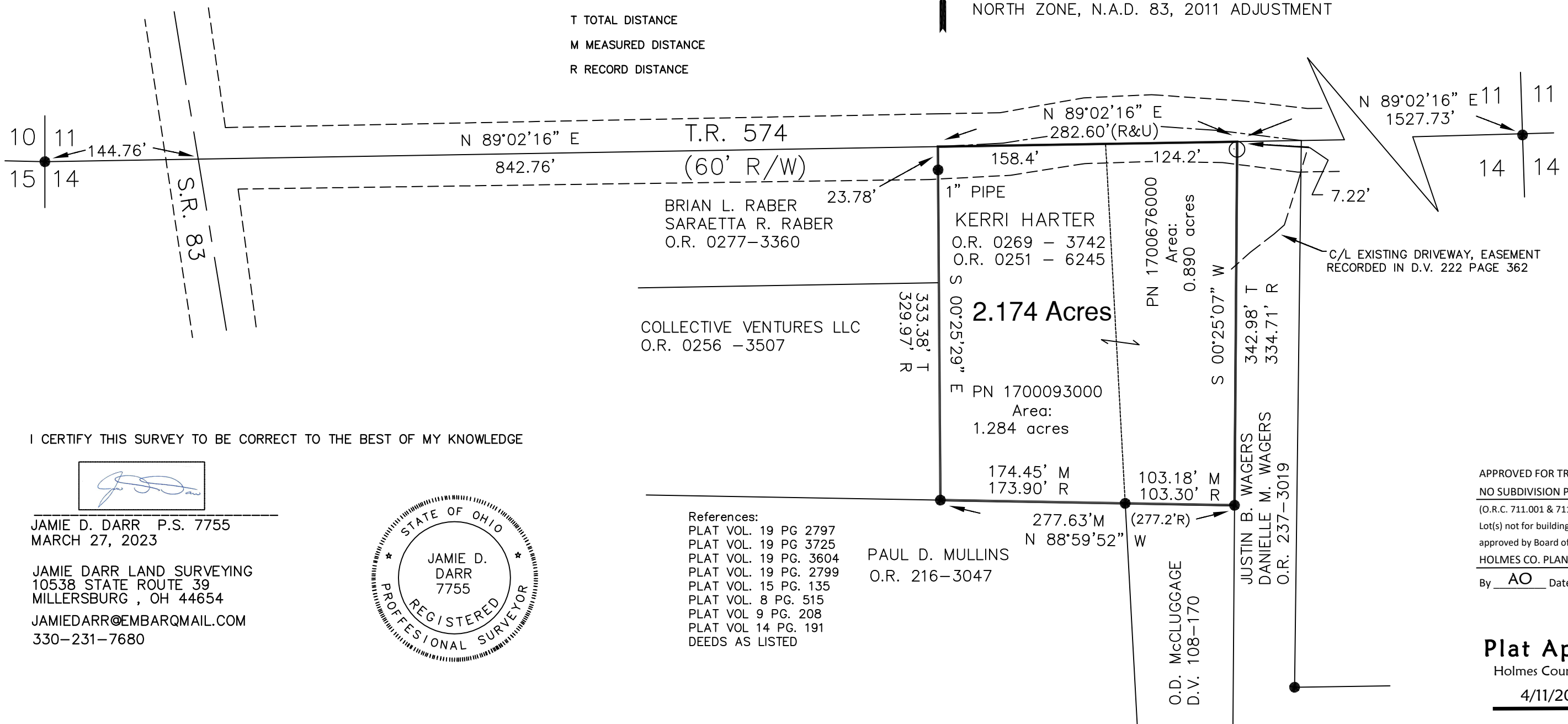
ORV 285 Pg 2355

RESURVEY AND COMBINATION OF
 O.R. 0251-6245, O.R. 269-3742

Surveyed for: Kerri Harter



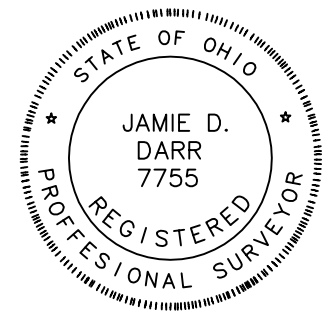
BASIS OF BEARINGS FROM OHIO
 STATE PLANE COORDINATE SYSTEM,
 NORTH ZONE, N.A.D. 83, 2011 ADJUSTMENT



I CERTIFY THIS SURVEY TO BE CORRECT TO THE BEST OF MY KNOWLEDGE

JAMIE D. DARR P.S. 7755
 MARCH 27, 2023

JAMIE DARR LAND SURVEYING
 10538 STATE ROUTE 39
 MILLERSBURG, OH 44654
 JAMIEDARR@EMBARQMAIL.COM
 330-231-7680



References:
 PLAT VOL. 19 PG 2797
 PLAT VOL. 19 PG 3725
 PLAT VOL. 19 PG. 3604
 PLAT VOL. 19 PG. 2799
 PLAT VOL. 15 PG. 135
 PLAT VOL. 8 PG. 515
 PLAT VOL 9 PG. 208
 PLAT VOL 14 PG. 191
 DEEDS AS LISTED

APPROVED FOR TRANSFER ONLY
 NO SUBDIVISION PLAT REQUIRED
 (O.R.C. 711.001 & 711.131)
 Lot(s) not for building unless
 approved by Board of Health
 HOLMES CO. PLANNING COMMISSION
 By AO Date 4/24/2023



Plat Approved
 Holmes County Map Office
 4/11/2023 MM