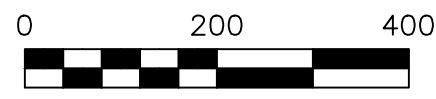


ORV 284 PG 6272  
 ORV 284 PG 6275



SCALE: 1"=200'

- ▲ R.R. SPIKE FOUND
- 5/8" REBAR FOUND UNLESS OTHERWISE NOTED
- 5/8" REBAR SET WITH I.D. CAP I.D. CAP MARKED "BAKER 6938"

BASIS OF BEARINGS FROM OHIO STATE PLANE COORDINATE SYSTEM, NORTH ZONE, N.A.D. 83 (2011 ADJUSTMENT)

REFERENCES

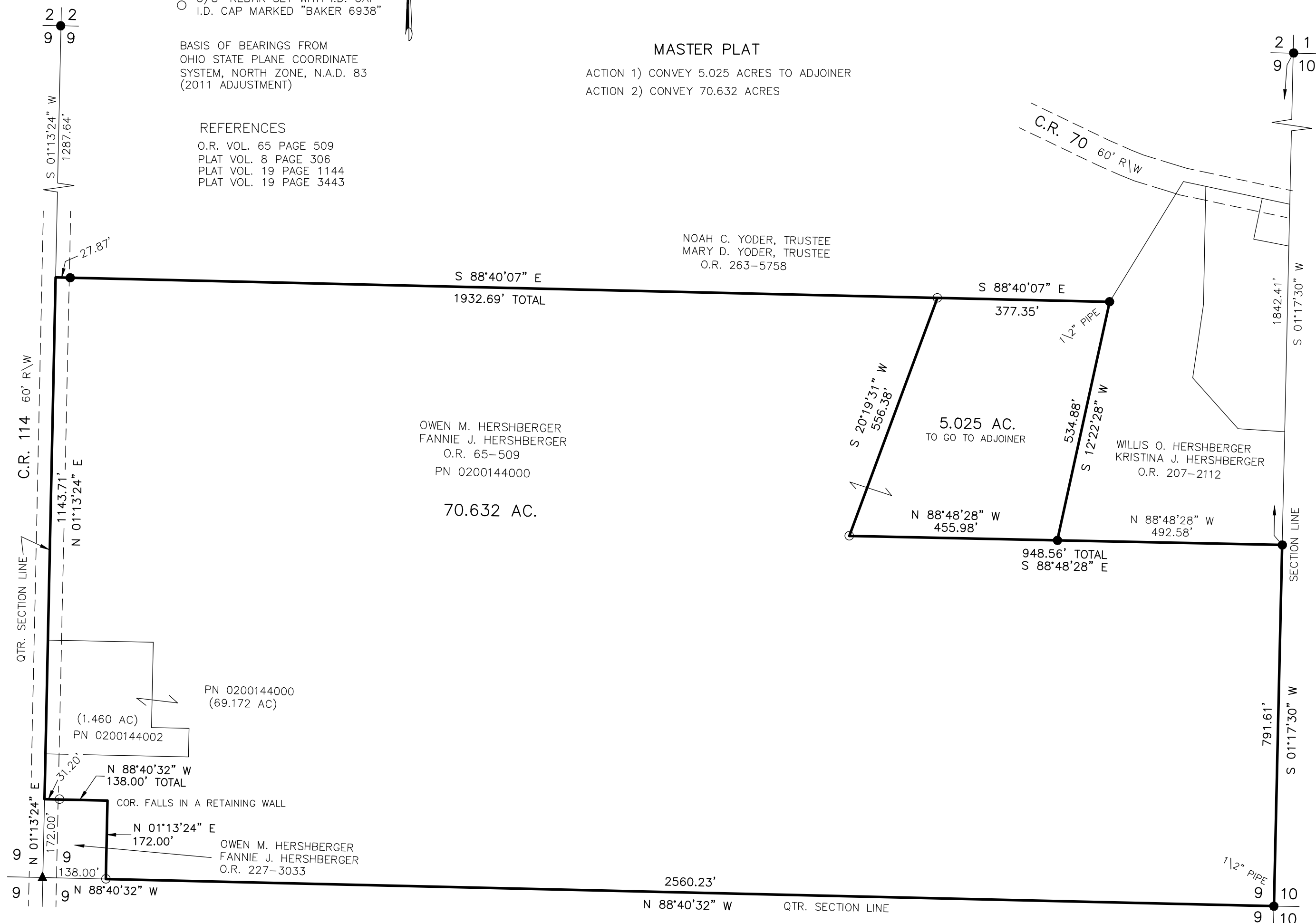
- O.R. VOL. 65 PAGE 509
- PLAT VOL. 8 PAGE 306
- PLAT VOL. 19 PAGE 1144
- PLAT VOL. 19 PAGE 3443

CLARK TOWNSHIP  
 N.E. QTR. SECTION 9  
 T-8 N; R-5 W  
 HOLMES COUNTY, OHIO

SURVEYED FOR: OWEN HERSHBERGER

MASTER PLAT

- ACTION 1) CONVEY 5.025 ACRES TO ADJOINER
- ACTION 2) CONVEY 70.632 ACRES



I CERTIFY THIS SURVEY TO BE CORRECT TO THE BEST OF MY KNOWLEDGE.  
*Donald C. Baker*  
 DONALD C. BAKER P.S. 6938  
 DATE: DEC. 9, 2022  
 KES  
 FILE NAME: WORK6\S-660-22



BAKER SURVEYING, LLC  
 138 N. CLAY STREET  
 MILLERSBURG, OHIO 44654  
 PH. 330-674-4788  
 EMAIL: bakersurveying@gmail.com

APPROVED FOR TRANSFER ONLY  
 NO SUBDIVISION PLAT REQUIRED  
 (O.R.C. 711.001 & 711.131)  
 Lot(s) not for building unless approved by Board of Health  
 HOLMES CO. PLANNING COMMISSION  
 By AO Date 3/7/2023

Plat Approved  
 Holmes County Map Office  
 3/3/2023 MM