

**Hardy Township**  
**N.E. Qtr. Fractional Sec. 18**  
**T-9 N; R-7 W**  
**Holmes County, Ohio**

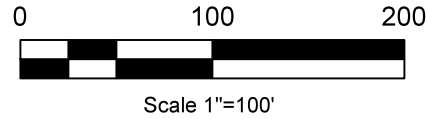
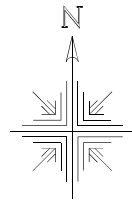
SURVEYED FOR: Sheila Wengerd

**REFERENCES:**

Deeds as shown

- Plat Vol. 19 Page 4434
- Plat Vol. 10 Page 857
- Plat Vol. 19 Page 217
- Plat Vol. 19 Page 560
- Plat Vol. 19 Page 4775
- Plat Vol. 7 Page 599

Basis of Bearing: Grid North, Ohio State Plane  
 Coordinate System Ohio North Zone, NAD 83.

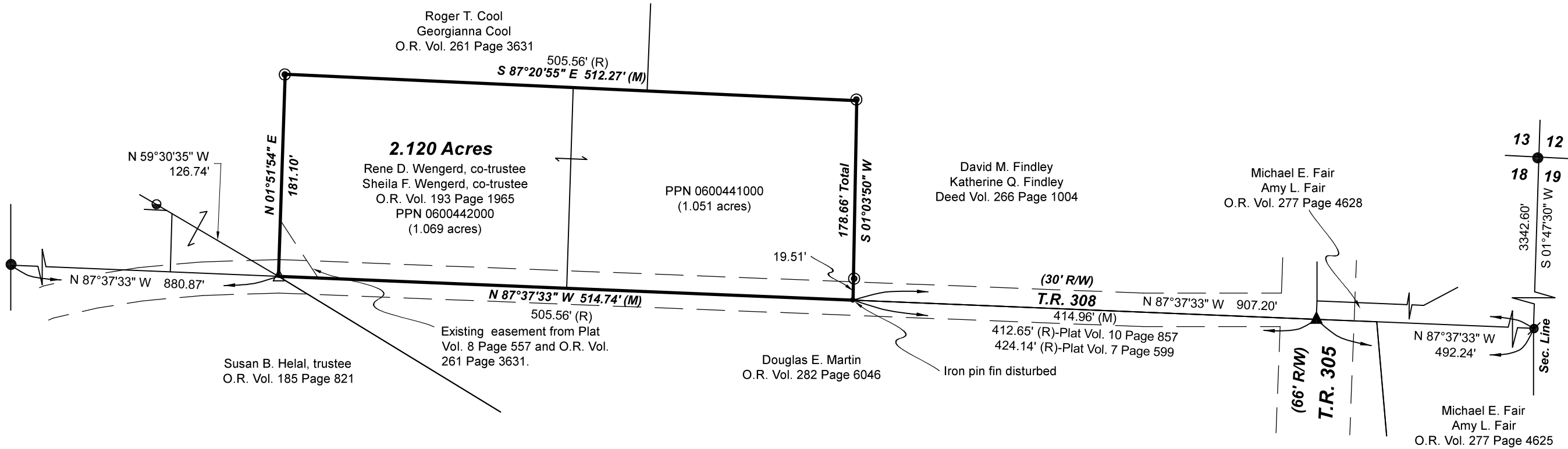


- ⊙ Pipe Found
- 5/8" Rebar Found
- ⊗ 5/8" Capped Pin Found "Baker"
- ⊖ 5/8" Capped Pin Found "RLK"
- ▲ R.R. Spk. Found
- △ R.R. Spk. Set
- Point

Note: The pipes found on the survey shown hereon are believed to be the original pins from Plat Vol. 7 Page 599 and Plat Vol. 10 Page 857 and align with the physical occupation despite the distances varying from the original plats.

202300000744  
 B: 19 P: 4944  
 FILED FOR RECORD IN  
 HOLMES COUNTY, OH  
 ANITA HALL, COUNTY RECORDER  
 02/24/2023 10:52 AM  
 SMALL PLAT . 40.00  
 PAGES: 1

*ORV 284 Pg 5104*  
*ORV 284 Pg 5108*  
*ORV 284 Pg 5112*



Pioneer Surveying & Services, LLC.  
 5434 Township Road 377  
 Millerburg, Ohio 44654  
 Phone: 330-231-0497  
 Email: caleb@pioneersurveyingandservices.com

I certify this survey to be correct to the best of my knowledge.

*Caleb Jerome Galbraith*

Caleb Jerome Galbraith P.S. 8703  
 Date: November 22, 2022  
 Job ID: 21122-H14



APPROVED FOR TRANSFER ONLY  
 NO SUBDIVISION PLAT REQUIRED  
 (O.R.C. 711.001 & 711.131)  
 Lot(s) not for building unless approved by Board of Health  
 HOLMES CO. PLANNING COMMISSION  
 By TS Date 2/23/2023



**Plat Approved**  
 Holmes County Map Office  
 1/5/2023 Rg/MM

