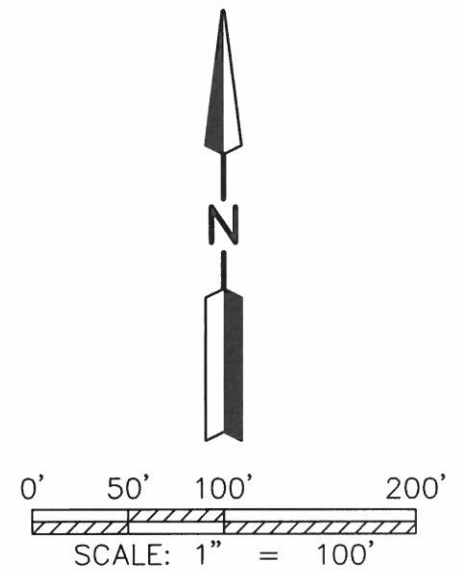
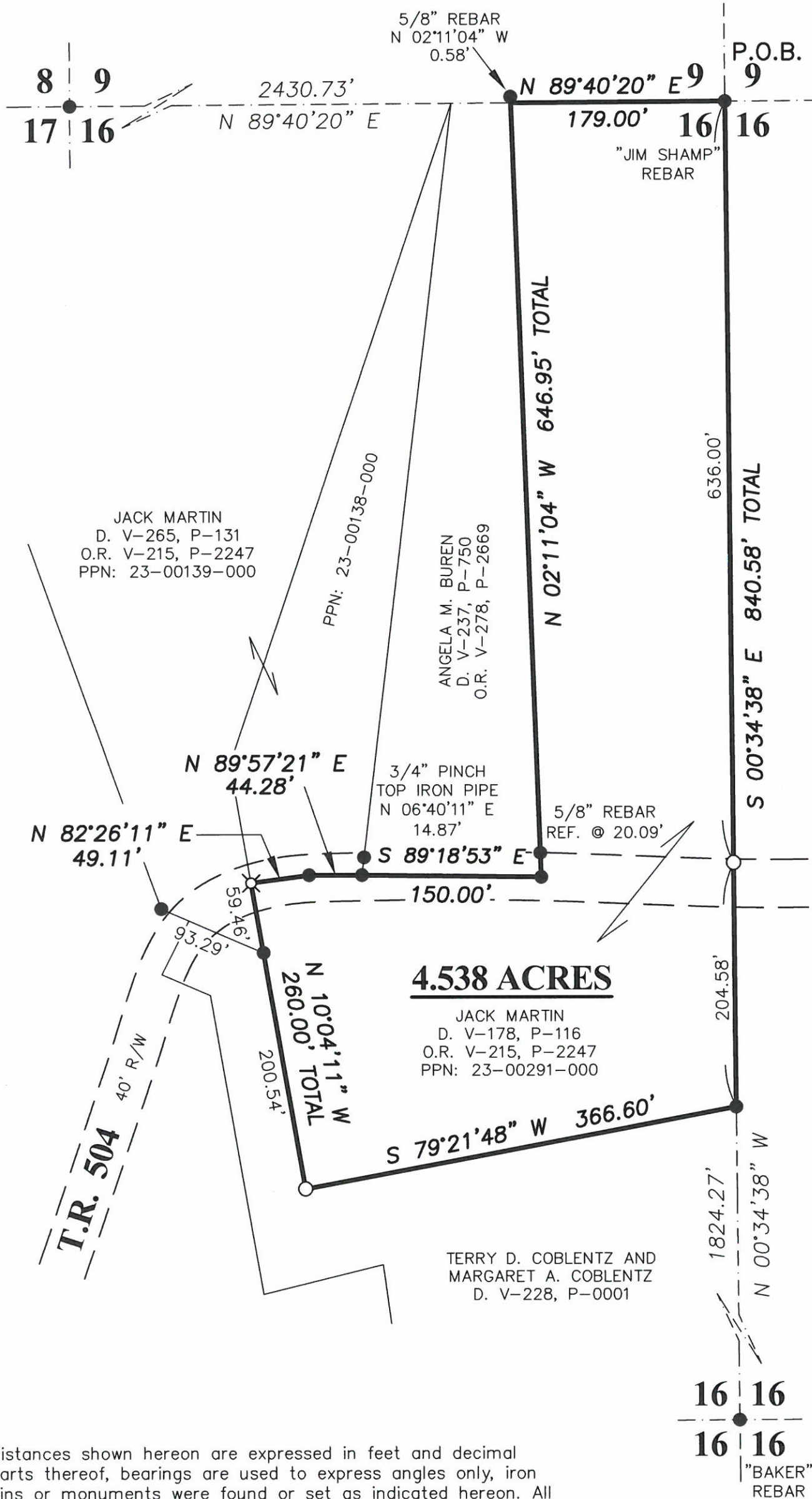


MAP OF SURVEY

NW QUARTER OF SECTION 16
T-17-N; R-14-W
RIPLEY TOWNSHIP
HOLMES COUNTY, OHIO

20230000324
B: 19 P: 4911
FILED FOR RECORD IN
HOLMES COUNTY, OH
ANITA HALL, COUNTY RECORDER
01/26/2023 02:42 PM
SMALL PLAT . 40.00
PAGES: 1

ORV 284 PG 2845



REFERENCE SURVEY:
3-19B, 8-288, 8-479, 10-891,
11-38, 18-512, 19-1624

BASIS OF BEARING:
THE BEARINGS AS SHOWN HEREON ARE
RELATIVE TO GRID NORTH OF THE OHIO
STATE PLANE COORDINATE SYSTEM, NAD
83 (2011) DATUM

- LEGEND —
- 5/8" REBAR FOUND (UNLESS NOTED)
 - ⊗ 2" MAG NAIL SET
 - 5/8" REBAR SET WITH I.D. CAP MARKED "LINGENFELTER" 8499

Distances shown hereon are expressed in feet and decimal parts thereof, bearings are used to express angles only, iron pins or monuments were found or set as indicated hereon. All of which I believe to be correct to the best of my knowledge.

By: Jason J. Lingenfelter 12-8-2022
JASON J. LINGENFELTER, P.S. #8499 DATE
JOB #22-045



APPROVED FOR TRANSFER ONLY
NO SUBDIVISION PLAT REQUIRED
(O.R.C. 711.001 & 711.131)
Lot(s) not for building unless approved by Board of Health
HOLMES CO. PLANNING COMMISSION
By TS Date 1/24/2023

Plat Approved
Holmes County Map Office
1/19/2023 MM

LINGENFELTER SURVEYING
PROFESSIONAL LAND SURVEYING (330)-231-3957