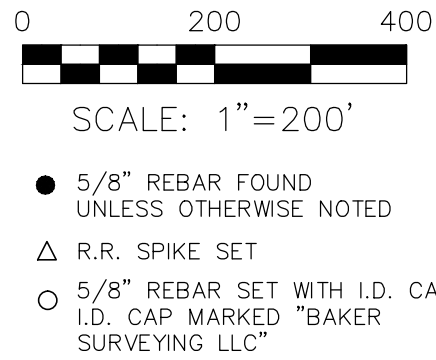


PRAIRIE TOWNSHIP  
 N.E. QTR. FRACTIONAL SECTION 13  
 T-13 N; R-13 W  
 3RD QTR., LOTS 9, 10, & 11  
 T-10 N; R-6 W  
 HOLMES COUNTY, OHIO  
 SURVEYED FOR: DAVID MAST



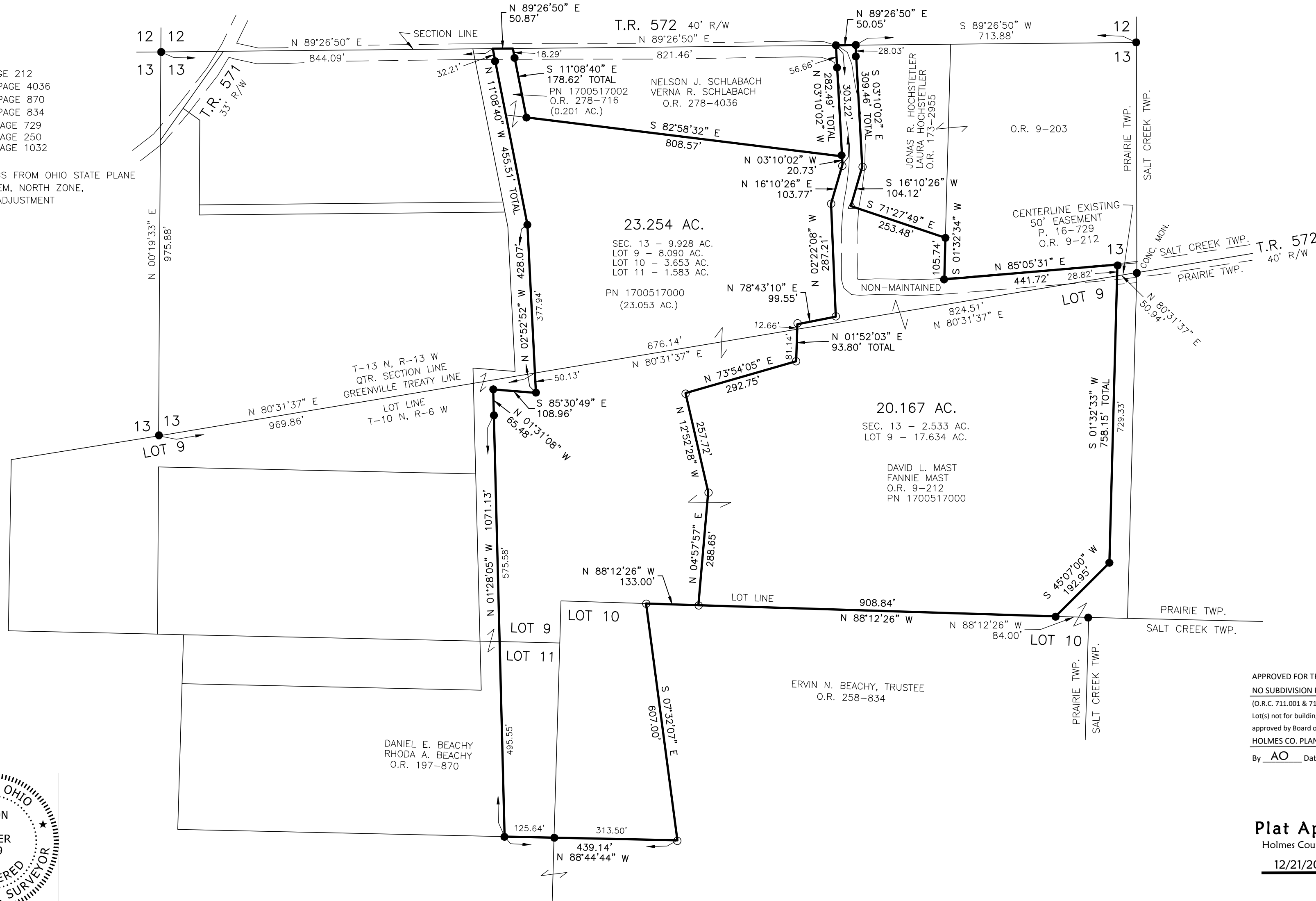
MASTER PLAT  
 ACTION 1) CONVEY 23.254 ACRES  
 ACTION 2) CONVEY 20.167 ACRES

20230000007  
 B: 19 P: 4895  
 FILED FOR RECORD IN  
 HOLMES COUNTY, OH  
 ANITA HALL, COUNTY RECORDER  
 01/03/2023 10:37 AM  
 SMALL PLAT . 40.00  
 PAGES: 1

ORV 284 PG 1404  
 ORV 284 PG 1408

REFERENCES  
 O.R. VOL. 9 PAGE 212  
 O.R. VOL. 278 PAGE 4036  
 O.R. VOL. 197 PAGE 870  
 O.R. VOL. 258 PAGE 834  
 PLAT VOL. 16 PAGE 729  
 PLAT VOL. 18 PAGE 250  
 PLAT VOL. 19 PAGE 1032

BASIS OF BEARINGS FROM OHIO STATE PLANE  
 COORDINATE SYSTEM, NORTH ZONE,  
 N.A.D. 83, 2011 ADJUSTMENT



APPROVED FOR TRANSFER ONLY  
 NO SUBDIVISION PLAT REQUIRED  
 (O.R.C. 711.001 & 711.131)  
 Lot(s) not for building unless  
 approved by Board of Health  
 HOLMES CO. PLANNING COMMISSION  
 By AO Date 12/22/2022

Plat Approved  
 Holmes County Map Office  
 12/21/2022 MM



I CERTIFY THIS SURVEY TO BE CORRECT  
 TO THE BEST OF MY KNOWLEDGE.

*A.L.G.*  
 AARON L. GERBER P.S. 8379  
 DATE: NOV. 14, 2022  
 ALG\TAB  
 FILE NAME: WORK5\S-586-22\CNK

BAKER SURVEYING, LLC  
 138 N. CLAY STREET  
 MILLERSBURG, OHIO 44654  
 PH. 330-674-4788  
 EMAIL: bakersurveying@gmail.com