

- 5/8" REBAR FOUND UNLESS OTHERWISE NOTED
- 5/8" REBAR SET WITH I.D. CAP I.D. CAP MARKED "BAKER 6938"

BASIS OF BEARINGS FROM OHIO STATE PLANE COORDINATE SYSTEM, NORTH ZONE, N.A.D. 83 (2011 ADJUSTMENT)

REFERENCES

- DEED VOL. 152 PAGE 503
- O.R. VOL. 262 PAGE 3309
- PLAT VOL. 5 PAGE 84
- PLAT VOL. 14 PAGE 171
- PLAT VOL. 13 PAGE 158
- PLAT VOL. 19 PAGE 1584

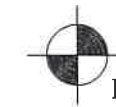
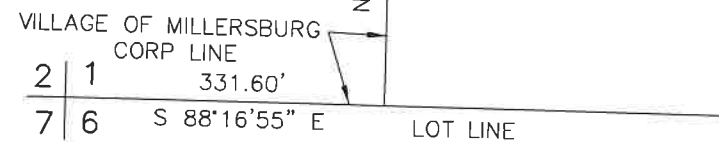
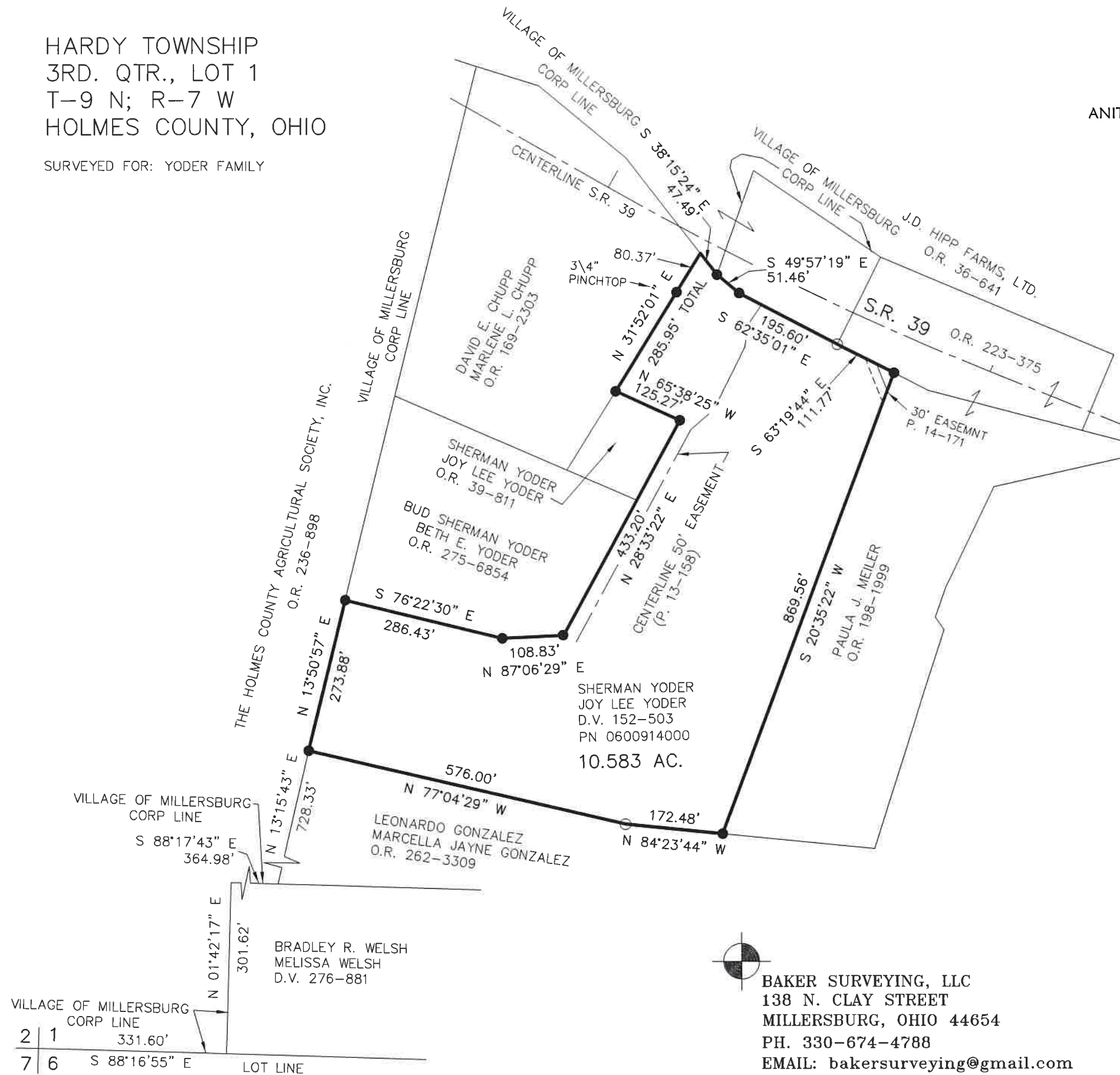


I CERTIFY THIS SURVEY TO BE CORRECT TO THE BEST OF MY KNOWLEDGE.

*Donald C. Baker*  
 DONALD C. BAKER P.S. 6938  
 DATE: OCT. 13, 2022  
 KES  
 FILE NAME: WORK6\S-484-22

HARDY TOWNSHIP  
 3RD. QTR., LOT 1  
 T-9 N; R-7 W  
 HOLMES COUNTY, OHIO

SURVEYED FOR: YODER FAMILY



BAKER SURVEYING, LLC  
 138 N. CLAY STREET  
 MILLERSBURG, OHIO 44654  
 PH. 330-674-4788  
 EMAIL: bakersurveying@gmail.com

202200006007  
 B: 19 P: 4893  
 FILED FOR RECORD IN  
 HOLMES COUNTY, OH  
 ANITA HALL, COUNTY RECORDER  
 12/30/2022 09:35 AM  
 SMALL PLAT . 40.00  
 PAGES: 1

ORV 284 PG 1315

APPROVED FOR TRANSFER ONLY  
 NO SUBDIVISION PLAT REQUIRED  
 (O.R.C. 711.001 & 711.131)  
 Lot(s) not for building unless  
 approved by Board of Health  
 HOLMES CO. PLANNING COMMISSION  
 By TS Date 12/15/2022



**Plat Approved**  
 Holmes County Map Office  
 12/13/2022 MM